



Full wwPDB EM Validation Report ⓘ

Apr 20, 2023 – 12:03 PM EDT

EMDB ID : EMD-25419
Title : Previously uncharacterized rectangular bacteria in the dolphin mouth
Authors : Dudek, N.K.; Galaz-Montoya, J.G.; Shi, H.; Mayer, M.; Danita, C.; Celis, A.I.;
Wu, G.H.; Behr, B.; Huang, K.C.; Chiu, W.; Relman, D.A.
Deposited on : 2021-11-11
Resolution : Not provided

This is a Full wwPDB EM Validation Report for a publicly released PDB entry.

We welcome your comments at validation@mail.wwpdb.org

A user guide is available at

<https://www.wwpdb.org/validation/2017/EMTomogramValidationReportHelp>

with specific help available everywhere you see the ⓘ symbol.

The types of validation reports are described at

<http://www.wwpdb.org/validation/2017/FAQs#types>.

The following versions of software and data (see [references ⓘ](#)) were used in the production of this report:

EMDB validation analysis : 0.0.1.dev50
Validation Pipeline (wwPDB-VP) : 2.32.2

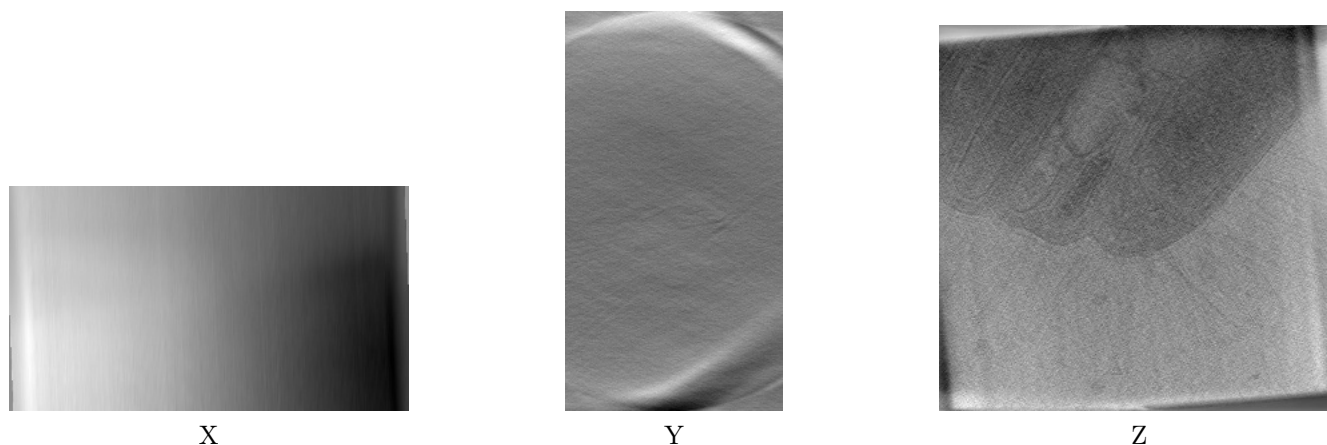
1 Experimental information

Property	Value	Source
EM reconstruction method	TOMOGRAPHY	Depositor
Imposed symmetry	Not Provided	
Number of tilted images used	28	Depositor
Resolution determination method	Not provided	
CTF correction method	Not provided	
Microscope	FEI TITAN KRIOS	Depositor
Voltage (kV)	300	Depositor
Electron dose ($e^-/\text{\AA}^2$)	120.0	Depositor
Minimum defocus (nm)	Not provided	
Maximum defocus (nm)	Not provided	
Magnification	Not provided	
Image detector	GATAN K2 SUMMIT (4k x 4k)	Depositor
Maximum voxel value	112.000	Depositor
Minimum voxel value	-108.000	Depositor
Average voxel value	18.431	Depositor
Voxel value standard deviation	12.318	Depositor
Recommended contour level	Not applicable	
Tomogram size (\AA)	14388.4795, 13908.864, 7808.748	wwPDB
Tomogram dimensions	960, 928, 521	wwPDB
Tomogram angles ($^\circ$)	90.0, 90.0, 90.0	wwPDB
Grid spacing (\AA)	14.988, 14.988, 14.988	Depositor

2 Tomogram visualisation [i](#)

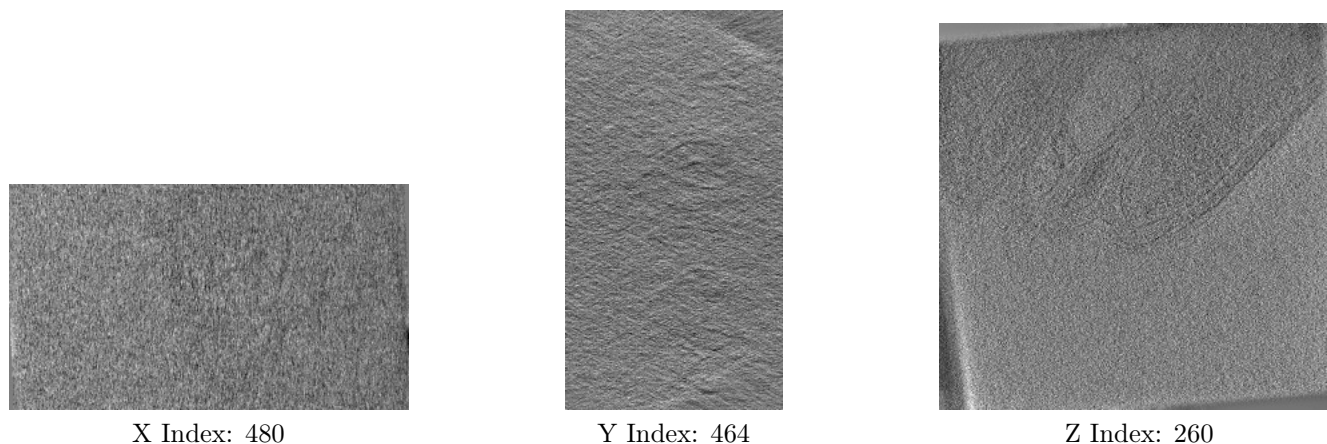
This section contains visualisations of the EMDB entry EMD-25419. These allow visual inspection of the internal detail of the tomogram and identification of artifacts.

2.1 Orthogonal projections [i](#)



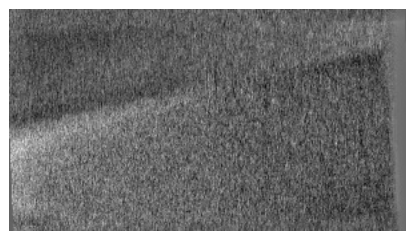
The images above show the tomogram projected in three orthogonal directions.

2.2 Central slices [i](#)

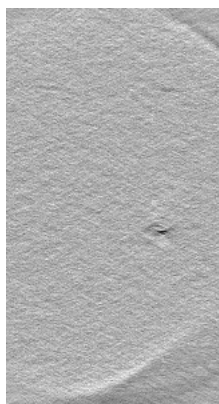


The images above show central slices of the tomogram in three orthogonal directions.

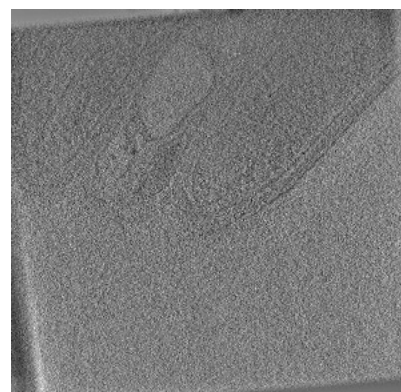
2.3 Largest variance slices [i](#)



X Index: 53



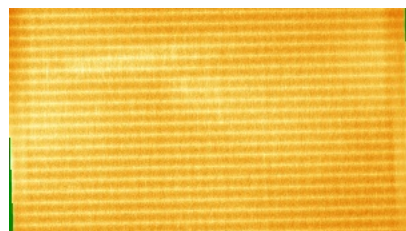
Y Index: 88



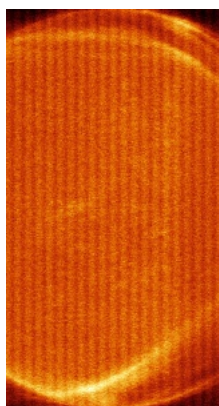
Z Index: 256

The images above show the largest variance slices of the tomogram in three orthogonal directions.

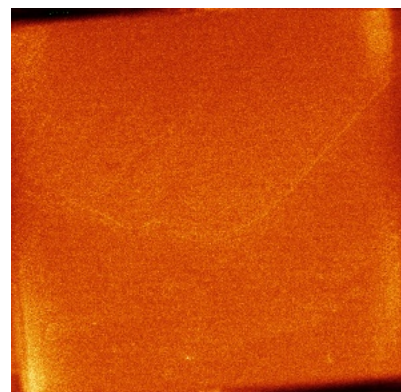
2.4 Orthogonal standard-deviation projections (False-color) [i](#)



X



Y



Z

The images above show the tomogram projected in three orthogonal directions.

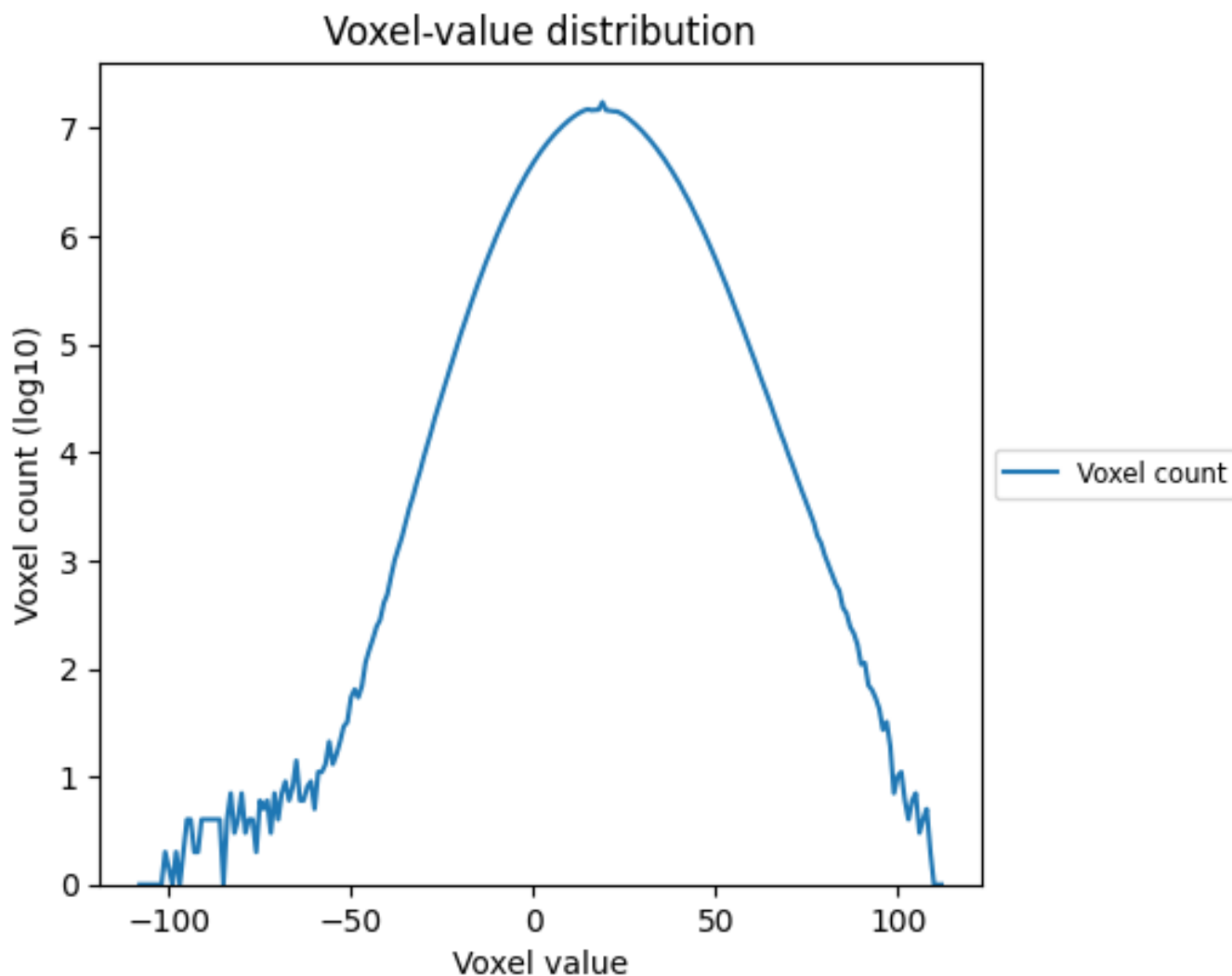
2.5 Mask visualisation [i](#)

This section was not generated. No masks/segmentation were deposited.

3 Tomogram analysis [i](#)

This section contains the results of statistical analysis of the tomogram.

3.1 Voxel-value distribution [i](#)



The voxel-value distribution is plotted in 128 intervals along the x-axis. The y-axis is logarithmic.