



Full wwPDB EM Validation Report ⓘ

Aug 14, 2021 – 10:03 am BST

EMDB ID : EMD-12958
Title : Cryo-tomogram showing the modulation of the K5/K14 keratin network in a keratinocyte ghost cell
Authors : Weber, M.S.; Eibauer, M.; Medalia, O.
Deposited on : 2021-05-17
Resolution : Not provided

This is a Full wwPDB EM Validation Report for a publicly released PDB entry.

We welcome your comments at validation@mail.wwpdb.org

A user guide is available at

<https://www.wwpdb.org/validation/2017/EMTomogramValidationReportHelp>

with specific help available everywhere you see the ⓘ symbol.

The following versions of software and data (see [references ⓘ](#)) were used in the production of this report:

EMDB validation analysis : 0.0.0.dev97
Validation Pipeline (wwPDB-VP) : 2.23.1

1 Experimental information

| Property | Value | Source |
|--------------------------------------|-------------------------------|-----------|
| EM reconstruction method | TOMOGRAPHY | Depositor |
| Imposed symmetry | Not Provided | |
| Number of tilted images used | 41 | Depositor |
| Resolution determination method | Not provided | |
| CTF correction method | Not provided | |
| Microscope | FEI TITAN KRIOS | Depositor |
| Voltage (kV) | 300 | Depositor |
| Electron dose ($e^-/\text{\AA}^2$) | 2.17 | Depositor |
| Minimum defocus (nm) | 3.0 | Depositor |
| Maximum defocus (nm) | 3.0 | Depositor |
| Magnification | 28571.0 | Depositor |
| Image detector | GATAN K2 SUMMIT (4k x 4k) | Depositor |
| Maximum voxel value | 125.000 | Depositor |
| Minimum voxel value | -126.000 | Depositor |
| Average voxel value | -66.138 | Depositor |
| Voxel value standard deviation | 8.832 | Depositor |
| Recommended contour level | Not applicable | |
| Tomogram size (\AA) | 6722.7744, 6498.682, 4376.806 | wwPDB |
| Tomogram dimensions | 960, 928, 625 | wwPDB |
| Tomogram angles ($^\circ$) | 90.0, 90.0, 90.0 | wwPDB |
| Grid spacing (\AA) | 7.00289, 7.00289, 7.0028896 | Depositor |

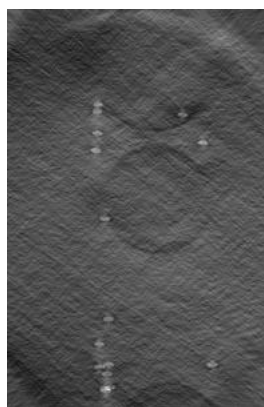
2 Tomogram visualisation [i](#)

This section contains visualisations of the EMDB entry EMD-12958. These allow visual inspection of the internal detail of the tomogram and identification of artifacts.

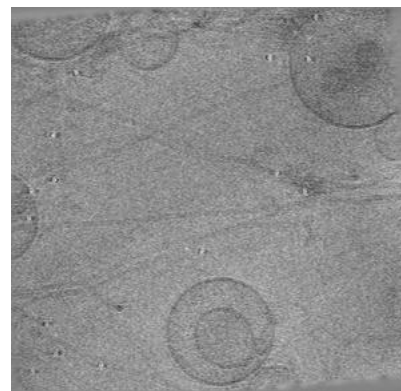
2.1 Orthogonal projections [i](#)



X



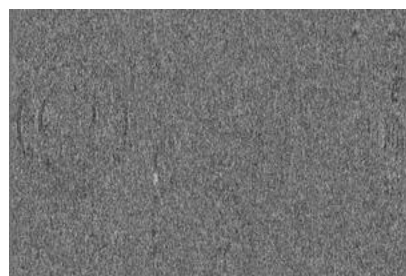
Y



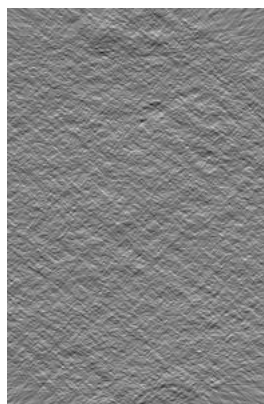
Z

The images above show the tomogram projected in three orthogonal directions.

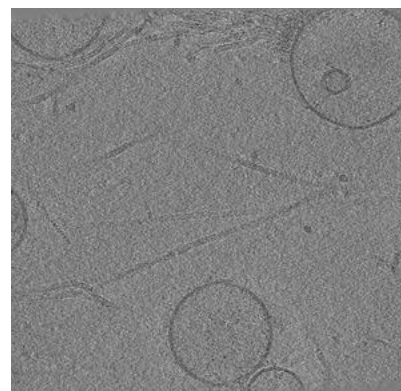
2.2 Central slices [i](#)



X Index: 480



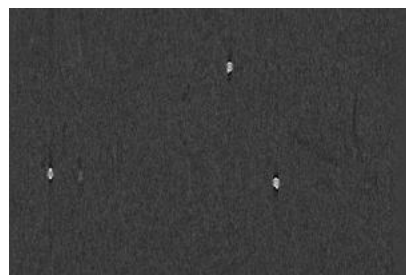
Y Index: 464



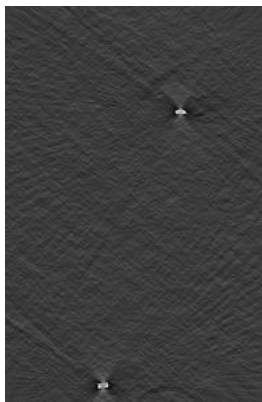
Z Index: 312

The images above show central slices of the tomogram in three orthogonal directions.

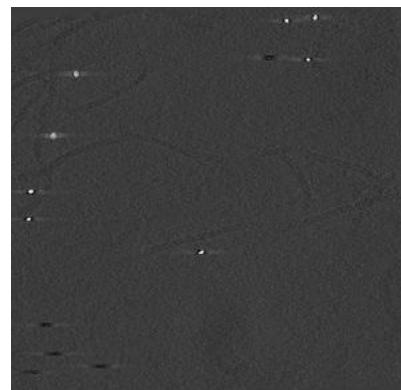
2.3 Largest variance slices [i](#)



X Index: 103



Y Index: 486



Z Index: 224

The images above show the largest variance slices of the tomogram in three orthogonal directions.

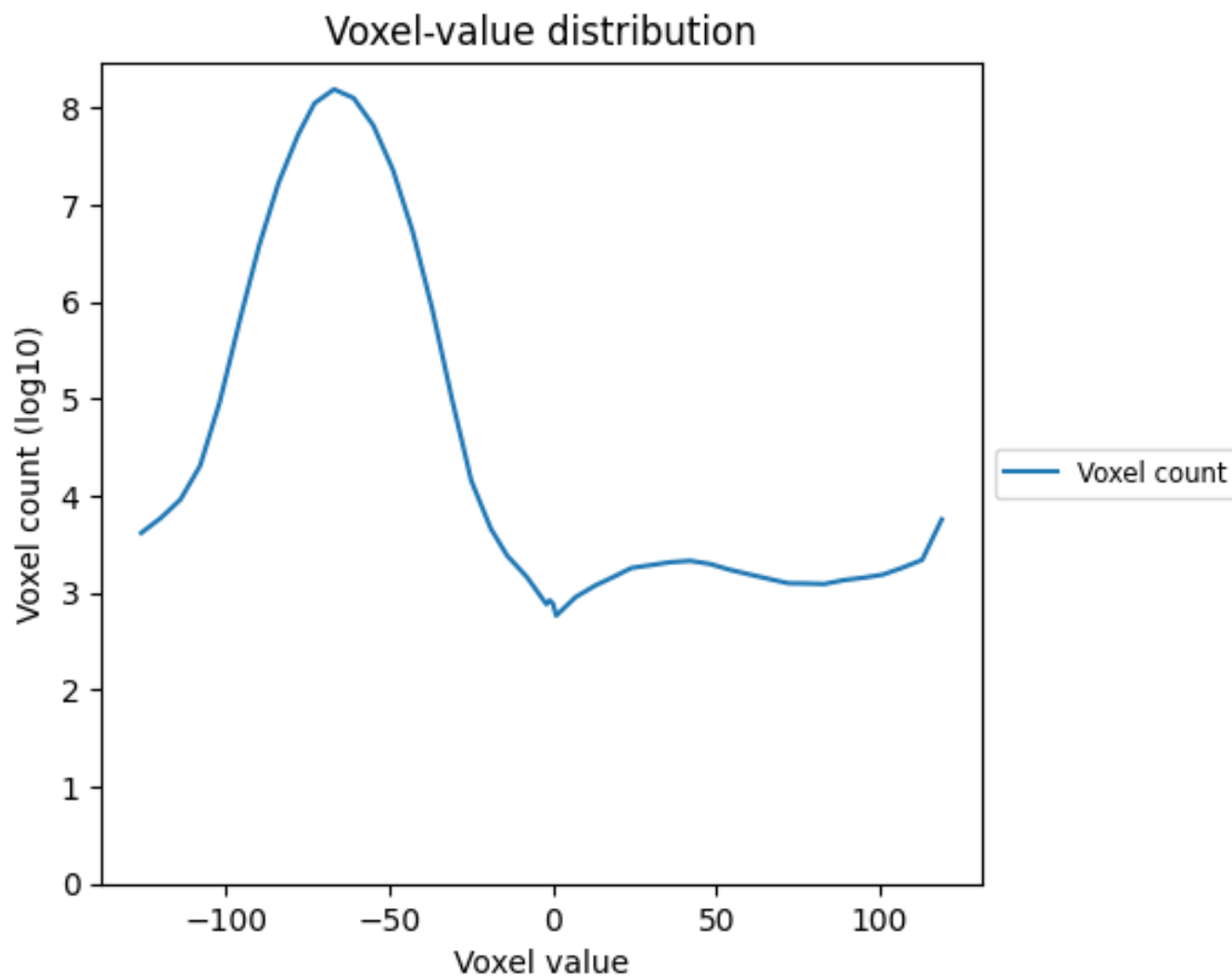
2.4 Mask visualisation [i](#)

This section was not generated. No masks/segmentation were deposited.

3 Tomogram analysis [i](#)

This section contains the results of statistical analysis of the tomogram.

3.1 Voxel-value distribution [i](#)



The voxel-value distribution is plotted in 128 intervals along the x-axis. The y-axis is logarithmic.