



## Full wwPDB EM Validation Report ⓘ

Nov 28, 2022 – 03:13 pm GMT

EMDB ID : EMD-14890  
Title : CM02A in complex with conM SOSIP  
Authors : van Schooten, J.; Ward, A.B.  
Deposited on : 2022-05-04  
Resolution : 25.00 Å(reported)

This is a Full wwPDB EM Validation Report for a publicly released PDB entry.

We welcome your comments at [validation@mail.wwpdb.org](mailto:validation@mail.wwpdb.org)

A user guide is available at

<https://www.wwpdb.org/validation/2017/EMMapValidationReportHelp>

with specific help available everywhere you see the ⓘ symbol.

The types of validation reports are described at

<http://www.wwpdb.org/validation/2017/FAQs#types>.

---

The following versions of software and data (see [references ⓘ](#)) were used in the production of this report:

EMDB validation analysis : 0.0.1.dev43  
Validation Pipeline (wwPDB-VP) : 2.31.3

# 1 Experimental information

| Property                             | Value                       | Source    |
|--------------------------------------|-----------------------------|-----------|
| EM reconstruction method             | SINGLE PARTICLE             | Depositor |
| Imposed symmetry                     | POINT, C1                   | Depositor |
| Number of particles used             | 34791                       | Depositor |
| Resolution determination method      | FSC 0.5 CUT-OFF             | Depositor |
| CTF correction method                | Not provided                |           |
| Microscope                           | FEI TECNAI F20              | Depositor |
| Voltage (kV)                         | 200                         | Depositor |
| Electron dose ( $e^-/\text{\AA}^2$ ) | 25.0                        | Depositor |
| Minimum defocus (nm)                 | 1.0                         | Depositor |
| Maximum defocus (nm)                 | 1.5                         | Depositor |
| Magnification                        | Not provided                |           |
| Image detector                       | TVIPS TEMCAM-F416 (4k x 4k) | Depositor |
| Maximum map value                    | 0.094                       | Depositor |
| Minimum map value                    | -0.046                      | Depositor |
| Average map value                    | 0.000                       | Depositor |
| Map value standard deviation         | 0.006                       | Depositor |
| Recommended contour level            | 0.015                       | Depositor |
| Map size (Å)                         | 339.84, 339.84, 339.84      | wwPDB     |
| Map dimensions                       | 192, 192, 192               | wwPDB     |
| Map angles (°)                       | 90.0, 90.0, 90.0            | wwPDB     |
| Pixel spacing (Å)                    | 1.77, 1.77, 1.77            | Depositor |

## 2 Map visualisation [i](#)

This section contains visualisations of the EMDB entry EMD-14890. These allow visual inspection of the internal detail of the map and identification of artifacts.

Images derived from a raw map, generated by summing the deposited half-maps, are presented below the corresponding image components of the primary map to allow further visual inspection and comparison with those of the primary map.

### 2.1 Orthogonal projections [i](#)

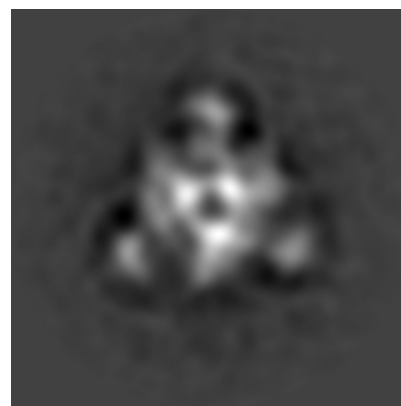
#### 2.1.1 Primary map



X

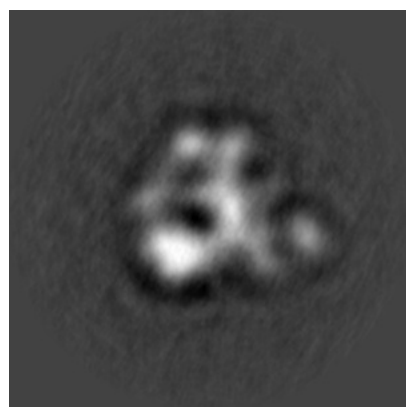


Y

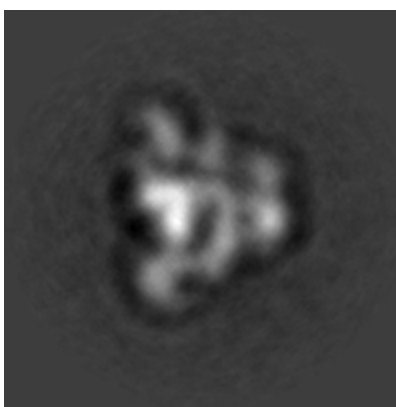


Z

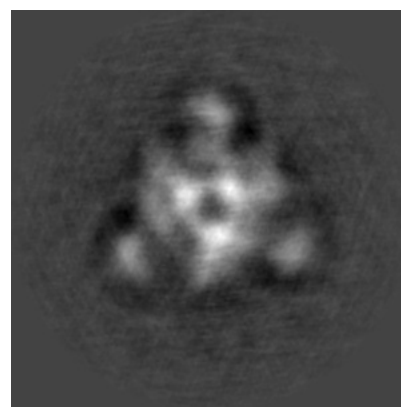
#### 2.1.2 Raw map



X



Y



Z

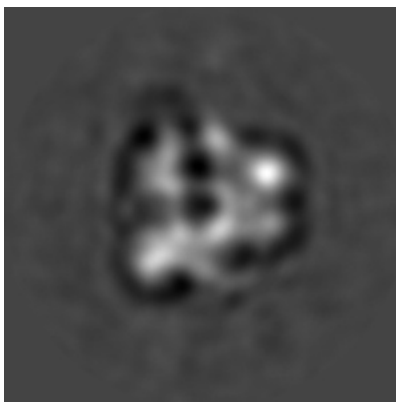
The images above show the map projected in three orthogonal directions.

## 2.2 Central slices [i](#)

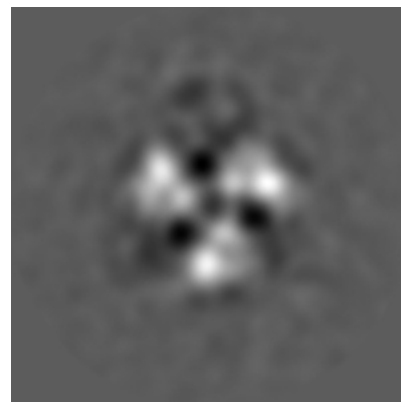
### 2.2.1 Primary map



X Index: 96

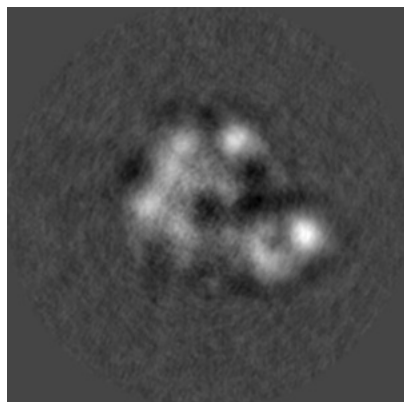


Y Index: 96

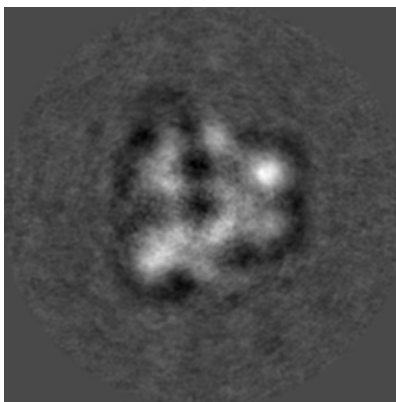


Z Index: 96

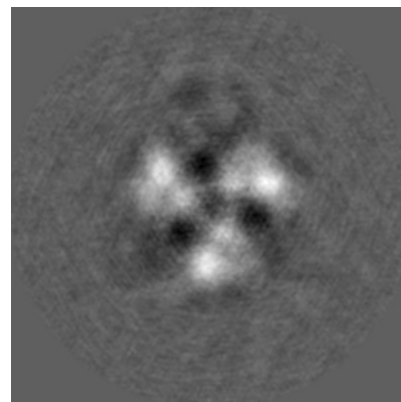
### 2.2.2 Raw map



X Index: 96



Y Index: 96

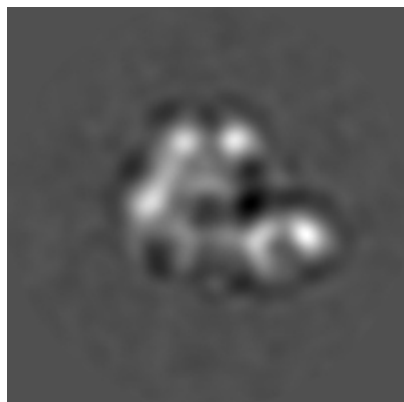


Z Index: 96

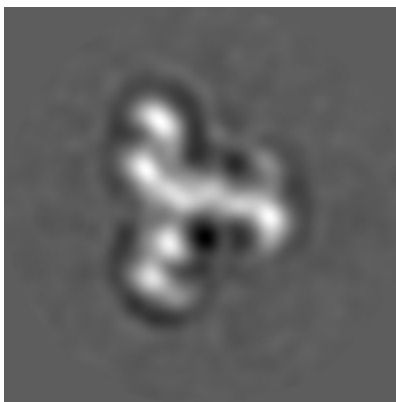
The images above show central slices of the map in three orthogonal directions.

## 2.3 Largest variance slices [i](#)

### 2.3.1 Primary map



X Index: 93

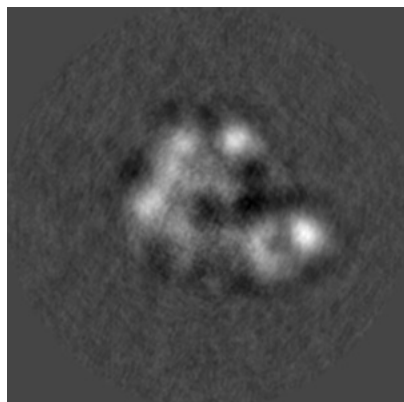


Y Index: 82

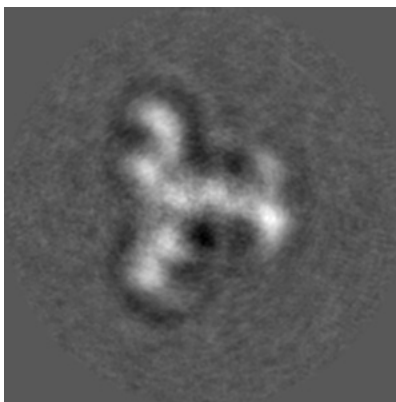


Z Index: 79

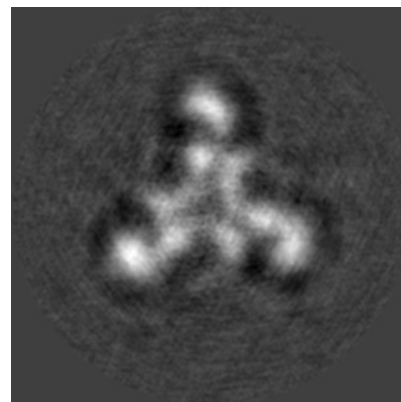
### 2.3.2 Raw map



X Index: 95



Y Index: 84



Z Index: 78

The images above show the largest variance slices of the map in three orthogonal directions.

## 2.4 Orthogonal surface views [i](#)

### 2.4.1 Primary map



X



Y



Z

The images above show the 3D surface view of the map at the recommended contour level 0.015. These images, in conjunction with the slice images, may facilitate assessment of whether an appropriate contour level has been provided.

### 2.4.2 Raw map



X



Y



Z

These images show the 3D surface of the raw map. The raw map's contour level was selected so that its surface encloses the same volume as the primary map does at its recommended contour level.

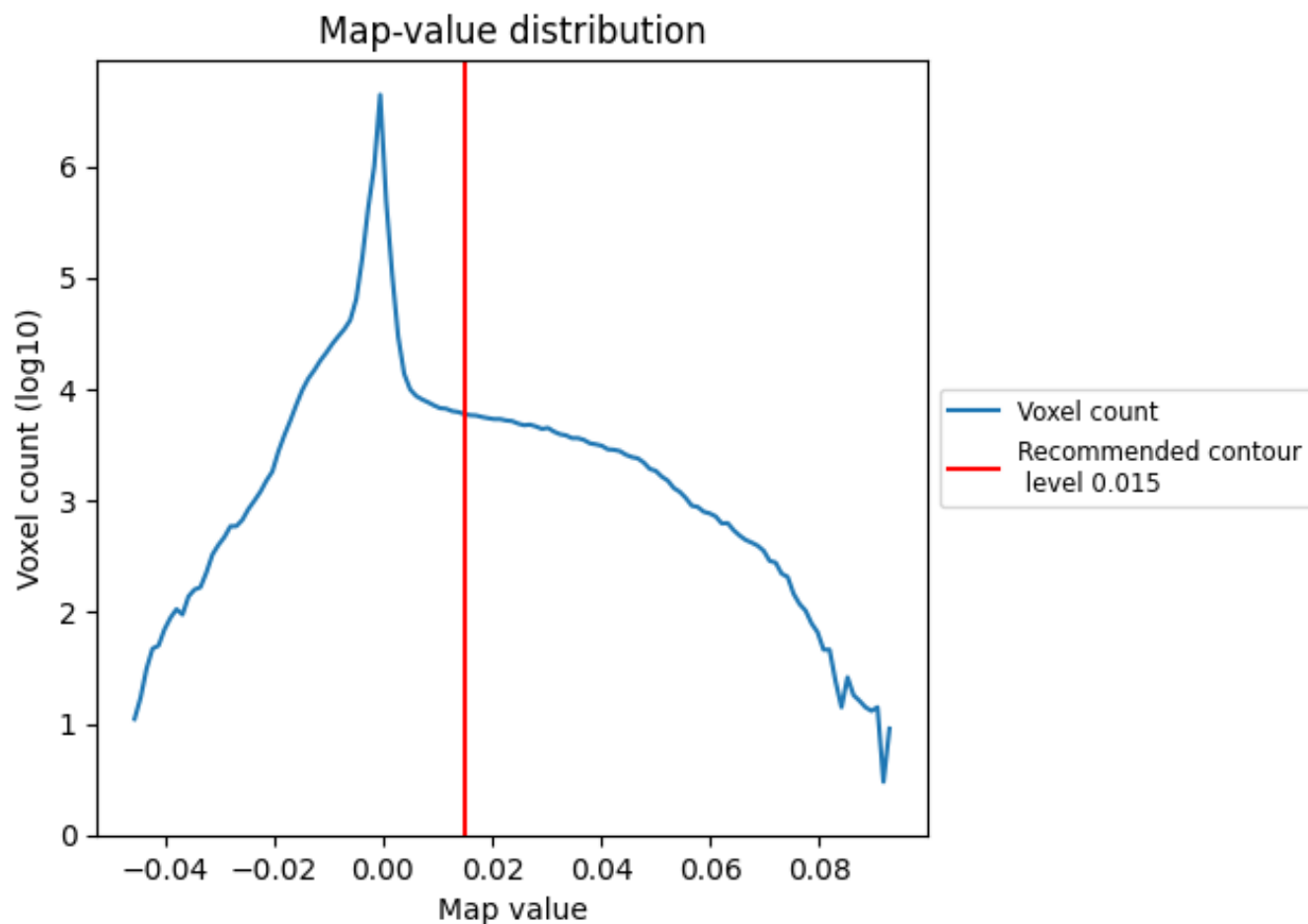
## 2.5 Mask visualisation [i](#)

This section was not generated. No masks/segmentation were deposited.

### 3 Map analysis [i](#)

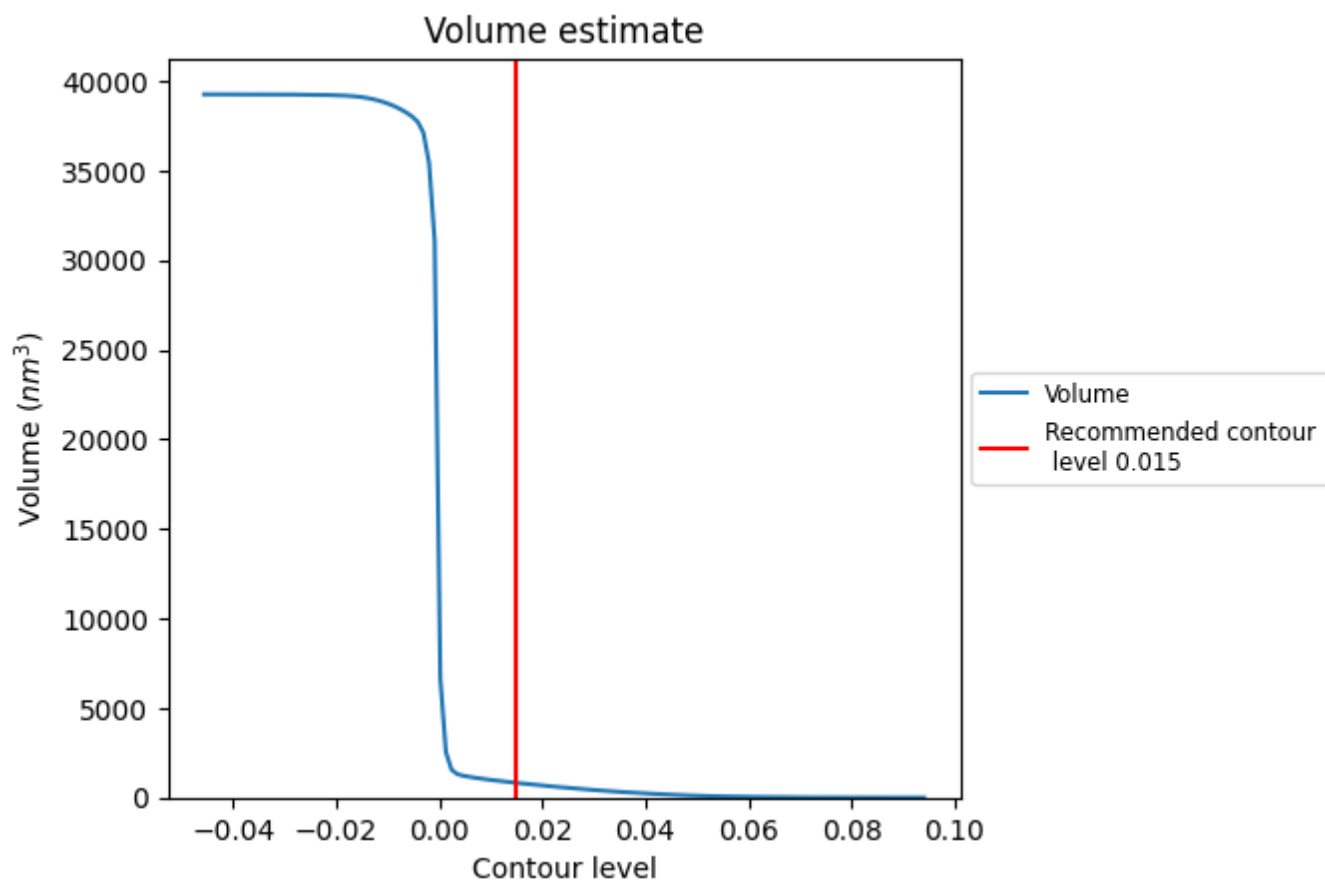
This section contains the results of statistical analysis of the map.

#### 3.1 Map-value distribution [i](#)



The map-value distribution is plotted in 128 intervals along the x-axis. The y-axis is logarithmic. A spike in this graph at zero usually indicates that the volume has been masked.

### 3.2 Volume estimate [i](#)

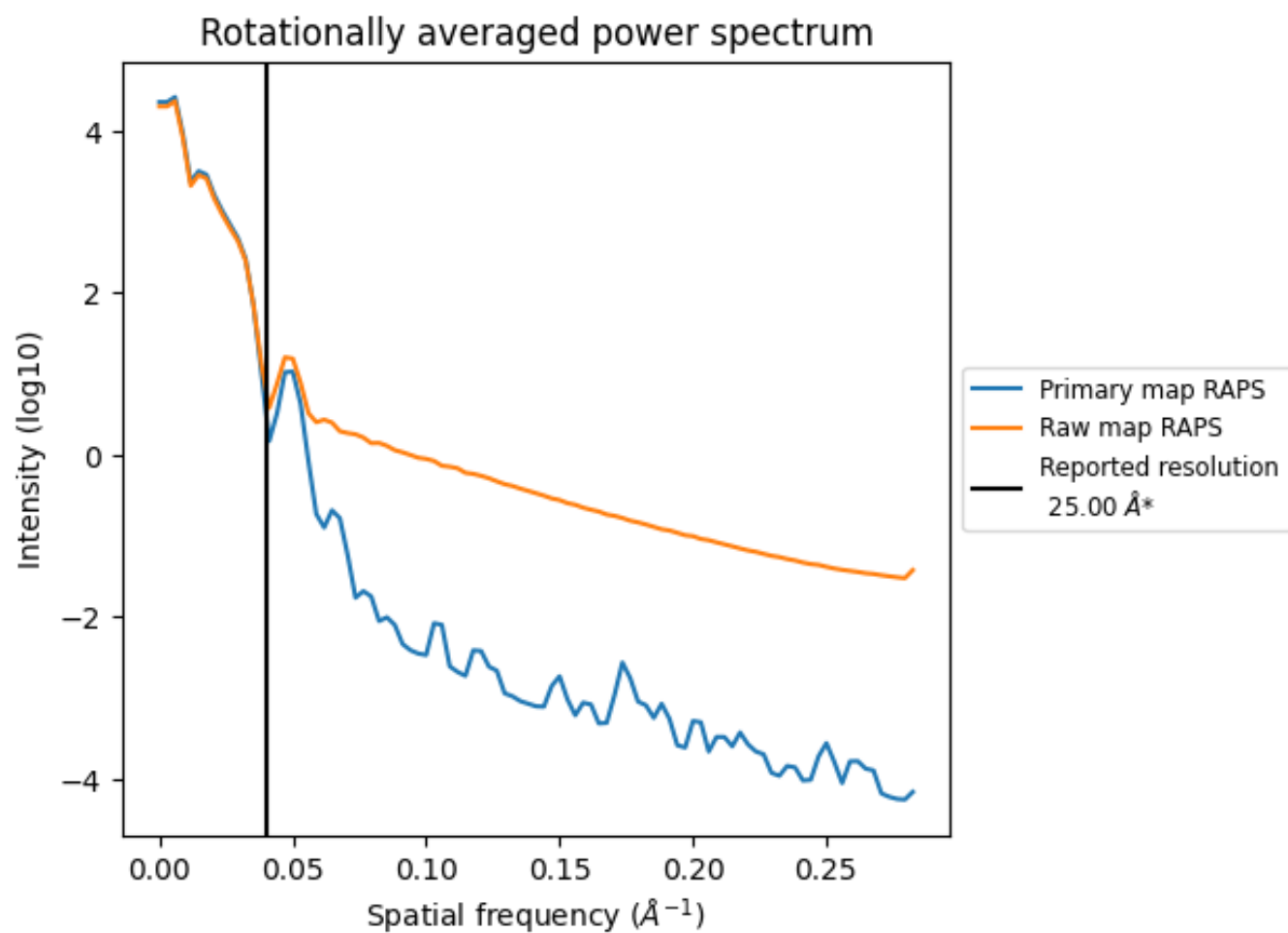


The volume at the recommended contour level is 820 nm<sup>3</sup>; this corresponds to an approximate mass of 740 kDa.

The volume estimate graph shows how the enclosed volume varies with the contour level. The recommended contour level is shown as a vertical line and the intersection between the line and the curve gives the volume of the enclosed surface at the given level.



### 3.3 Rotationally averaged power spectrum ⓘ

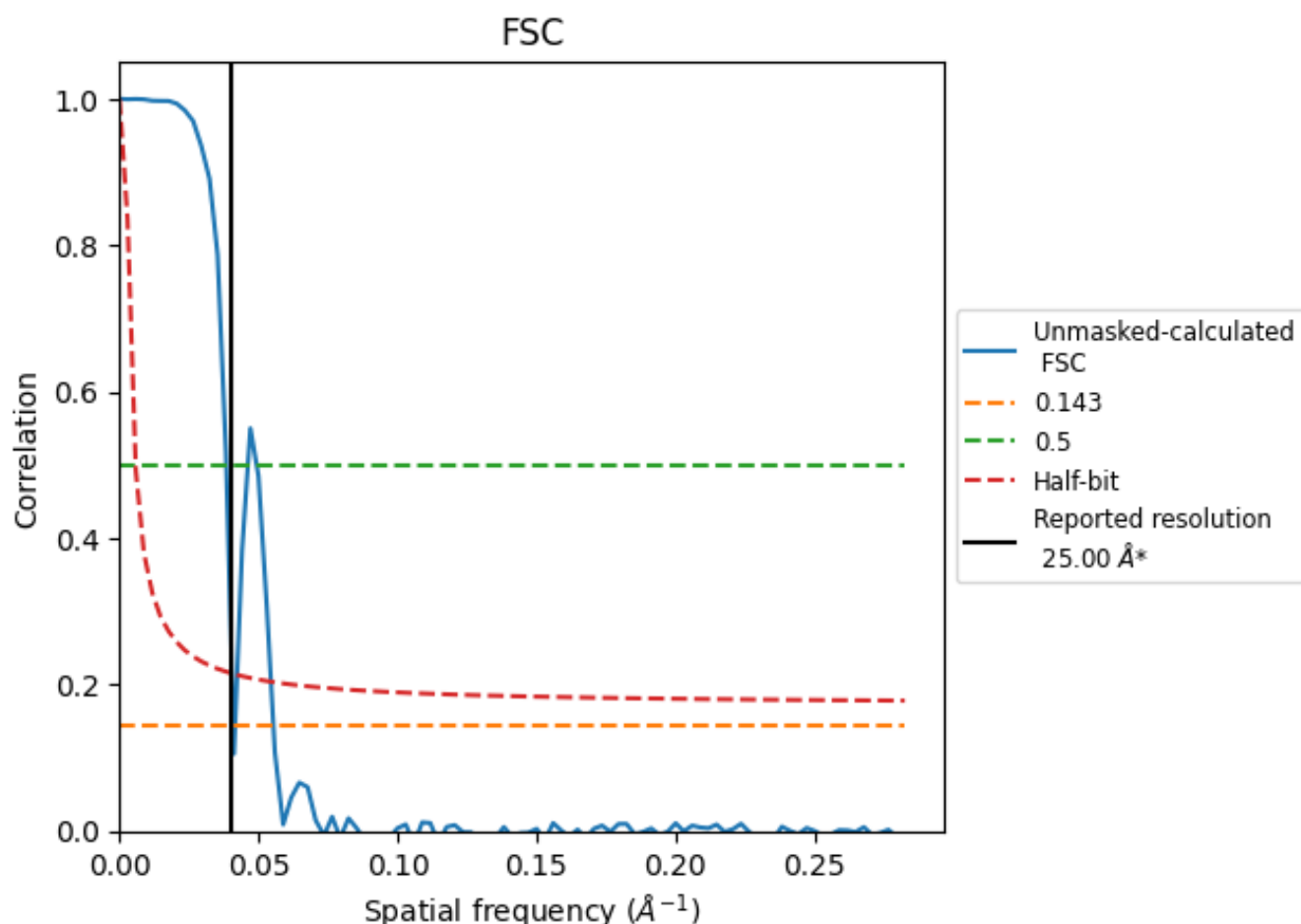


\*Reported resolution corresponds to spatial frequency of 0.040 Å<sup>-1</sup>

## 4 Fourier-Shell correlation [i](#)

Fourier-Shell Correlation (FSC) is the most commonly used method to estimate the resolution of single-particle and subtomogram-averaged maps. The shape of the curve depends on the imposed symmetry, mask and whether or not the two 3D reconstructions used were processed from a common reference. The reported resolution is shown as a black line. A curve is displayed for the half-bit criterion in addition to lines showing the 0.143 gold standard cut-off and 0.5 cut-off.

### 4.1 FSC [i](#)



\*Reported resolution corresponds to spatial frequency of  $0.040 \text{ \AA}^{-1}$

## 4.2 Resolution estimates [i](#)

| Resolution estimate (Å)   | Estimation criterion (FSC cut-off) |       |          |
|---------------------------|------------------------------------|-------|----------|
|                           | 0.143                              | 0.5   | Half-bit |
| Reported by author        | -                                  | 25.00 | -        |
| Author-provided FSC curve | -                                  | -     | -        |
| Unmasked-calculated*      | 24.45                              | 26.04 | 24.75    |

\*Resolution estimate based on FSC curve calculated by comparison of deposited half-maps.