



## wwPDB EM Validation Summary Report ⓘ

Apr 8, 2024 – 11:24 am BST

EMDB ID : EMD-18238  
Title : Structure of the recycling U5 snRNP bound to chaperone CD2BP2 and TSSC4 (Map 5)  
Authors : Riabov Bassat, D.; Plaschka, C.; Vorlaender, M.K.  
Deposited on : 2023-08-17  
Resolution : 2.60 Å(reported)

This is a wwPDB EM Validation Summary Report for a publicly released PDB entry.

We welcome your comments at [validation@mail.wwpdb.org](mailto:validation@mail.wwpdb.org)

A user guide is available at

<https://www.wwpdb.org/validation/2017/EMMapValidationReportHelp>

with specific help available everywhere you see the ⓘ symbol.

The types of validation reports are described at

<http://www.wwpdb.org/validation/2017/FAQs#types>.

---

The following versions of software and data (see [references ⓘ](#)) were used in the production of this report:

EMDB validation analysis : 0.0.1.dev92  
Validation Pipeline (wwPDB-VP) : 2.36

# 1 Experimental information

Property	Value	Source
EM reconstruction method	SINGLE PARTICLE	Depositor
Imposed symmetry	Not Provided	
Number of particles used	256427	Depositor
Resolution determination method	FSC 0.143 CUT-OFF	Depositor
CTF correction method	Not provided	
Microscope	FEI TITAN KRIOS	Depositor
Voltage (kV)	300	Depositor
Electron dose ( $e^-/\text{\AA}^2$ )	40.0	Depositor
Minimum defocus (nm)	0.5	Depositor
Maximum defocus (nm)	2.0	Depositor
Magnification	Not provided	
Image detector	FEI FALCON IV (4k x 4k)	Depositor
Maximum map value	5.051	Depositor
Minimum map value	-2.253	Depositor
Average map value	0.002	Depositor
Map value standard deviation	0.057	Depositor
Recommended contour level	0.25	Depositor
Map size ( $\text{\AA}$ )	446.4, 446.4, 446.4	wwPDB
Map dimensions	360, 360, 360	wwPDB
Map angles ( $^\circ$ )	90.0, 90.0, 90.0	wwPDB
Pixel spacing ( $\text{\AA}$ )	1.24, 1.24, 1.24	Depositor

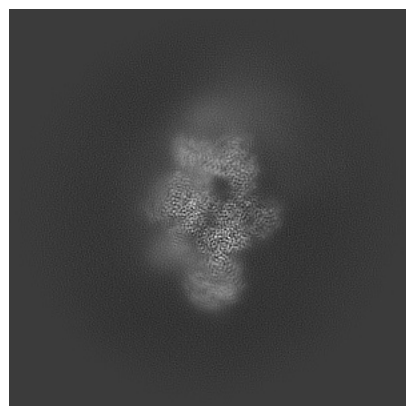
## 2 Map visualisation [i](#)

This section contains visualisations of the EMDB entry EMD-18238. These allow visual inspection of the internal detail of the map and identification of artifacts.

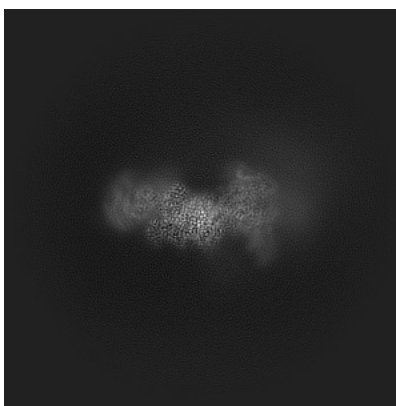
Images derived from a raw map, generated by summing the deposited half-maps, are presented below the corresponding image components of the primary map to allow further visual inspection and comparison with those of the primary map.

### 2.1 Orthogonal projections [i](#)

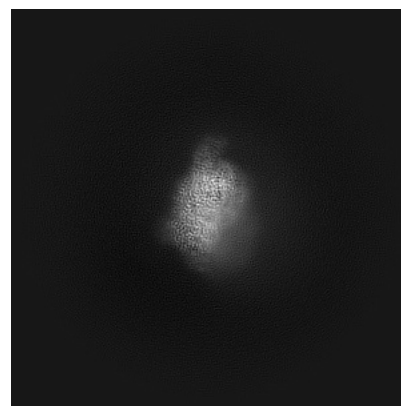
#### 2.1.1 Primary map



X

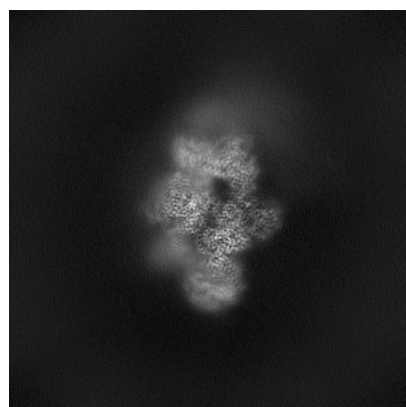


Y

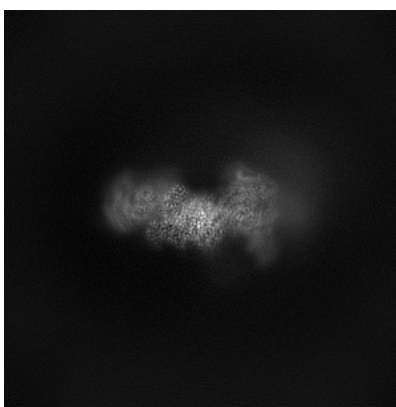


Z

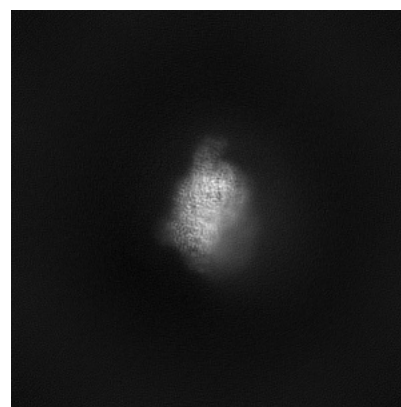
#### 2.1.2 Raw map



X



Y

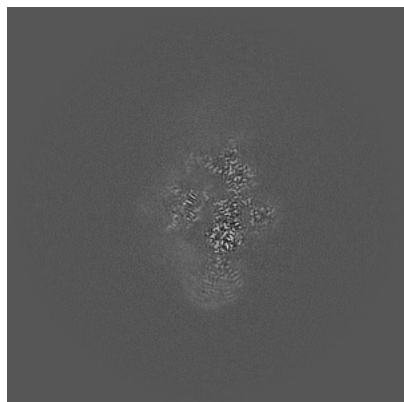


Z

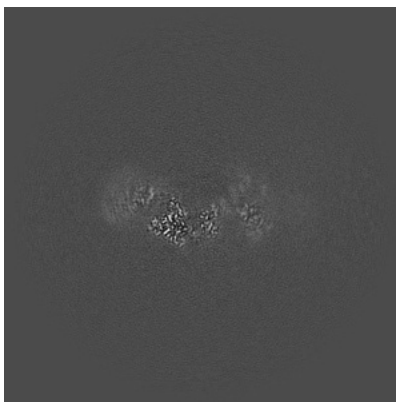
The images above show the map projected in three orthogonal directions.

## 2.2 Central slices [i](#)

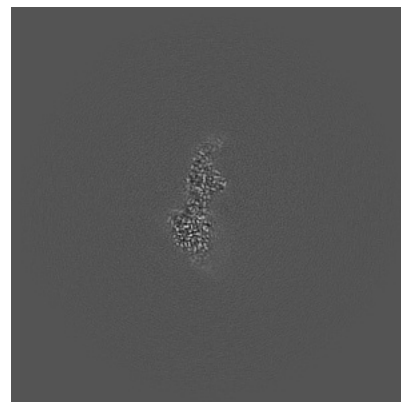
### 2.2.1 Primary map



X Index: 180

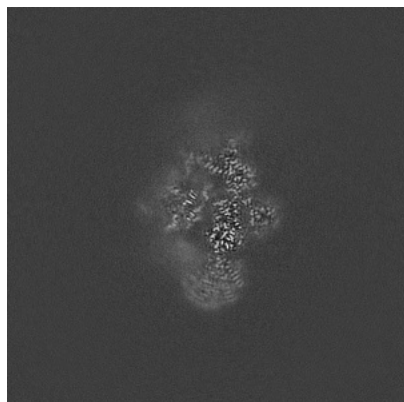


Y Index: 180

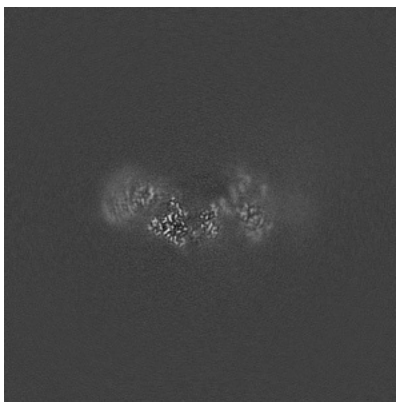


Z Index: 180

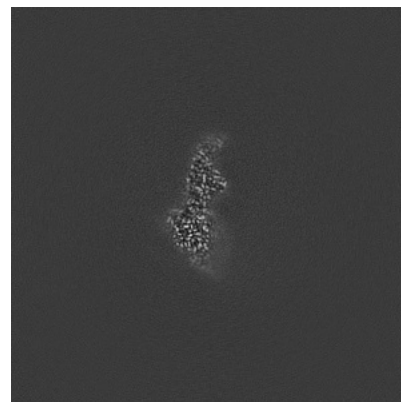
### 2.2.2 Raw map



X Index: 180



Y Index: 180

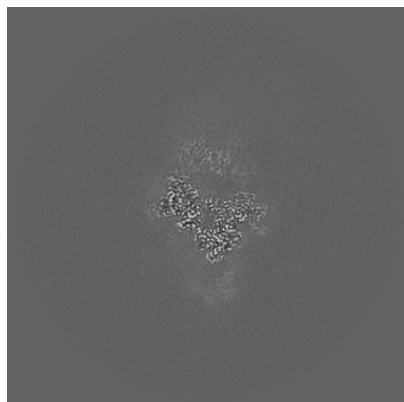


Z Index: 180

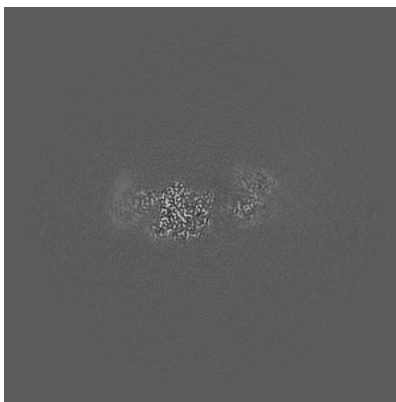
The images above show central slices of the map in three orthogonal directions.

## 2.3 Largest variance slices [i](#)

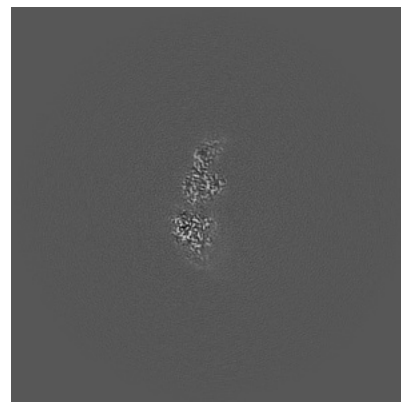
### 2.3.1 Primary map



X Index: 167

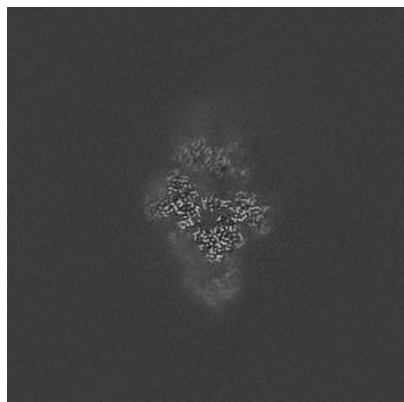


Y Index: 197

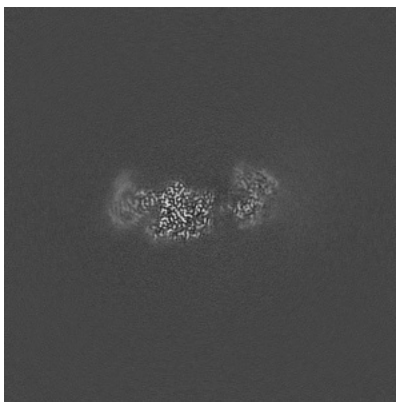


Z Index: 175

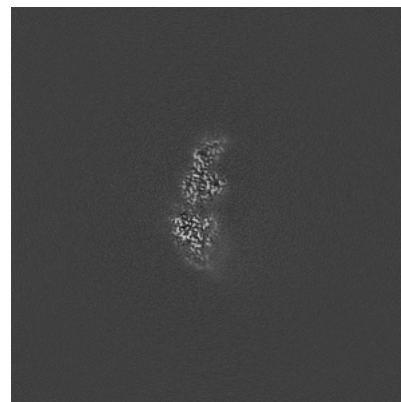
### 2.3.2 Raw map



X Index: 168



Y Index: 197

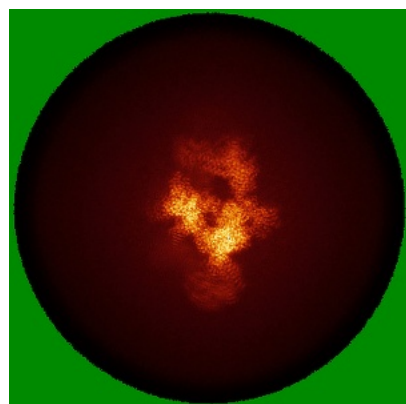


Z Index: 175

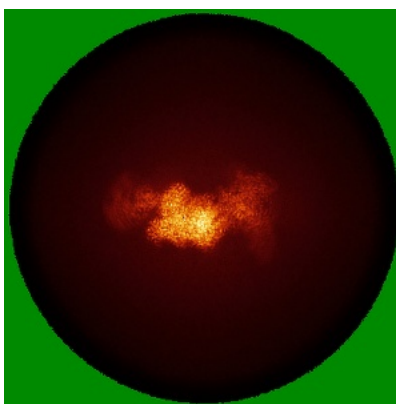
The images above show the largest variance slices of the map in three orthogonal directions.

## 2.4 Orthogonal standard-deviation projections (False-color) [i](#)

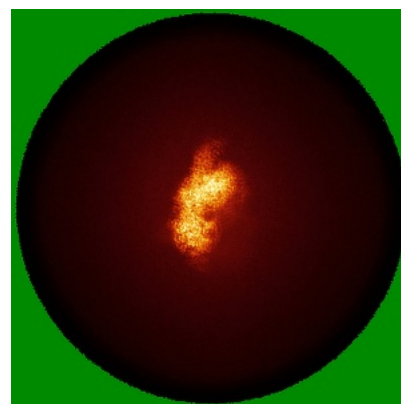
### 2.4.1 Primary map



X

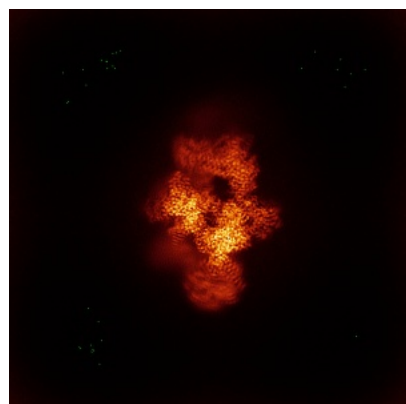


Y

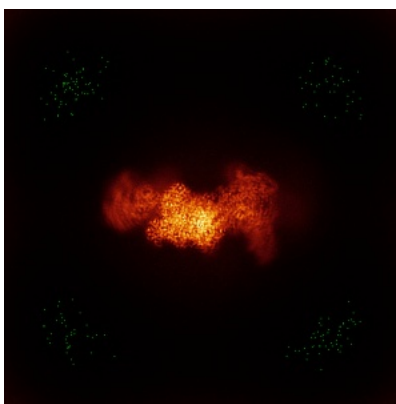


Z

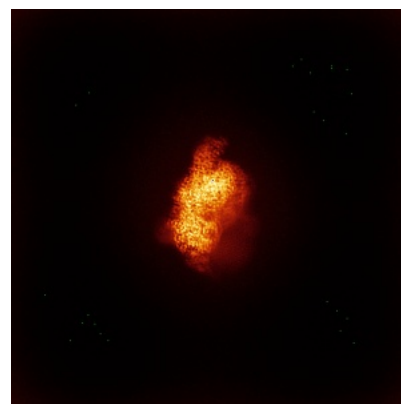
### 2.4.2 Raw map



X



Y



Z

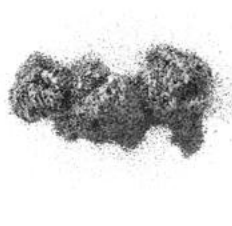
The images above show the map standard deviation projections with false color in three orthogonal directions. Minimum values are shown in green, max in blue, and dark to light orange shades represent small to large values respectively.

## 2.5 Orthogonal surface views [i](#)

### 2.5.1 Primary map



X



Y



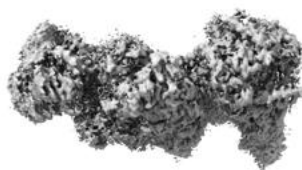
Z

The images above show the 3D surface view of the map at the recommended contour level 0.25. These images, in conjunction with the slice images, may facilitate assessment of whether an appropriate contour level has been provided.

### 2.5.2 Raw map



X



Y



Z

These images show the 3D surface of the raw map. The raw map's contour level was selected so that its surface encloses the same volume as the primary map does at its recommended contour level.

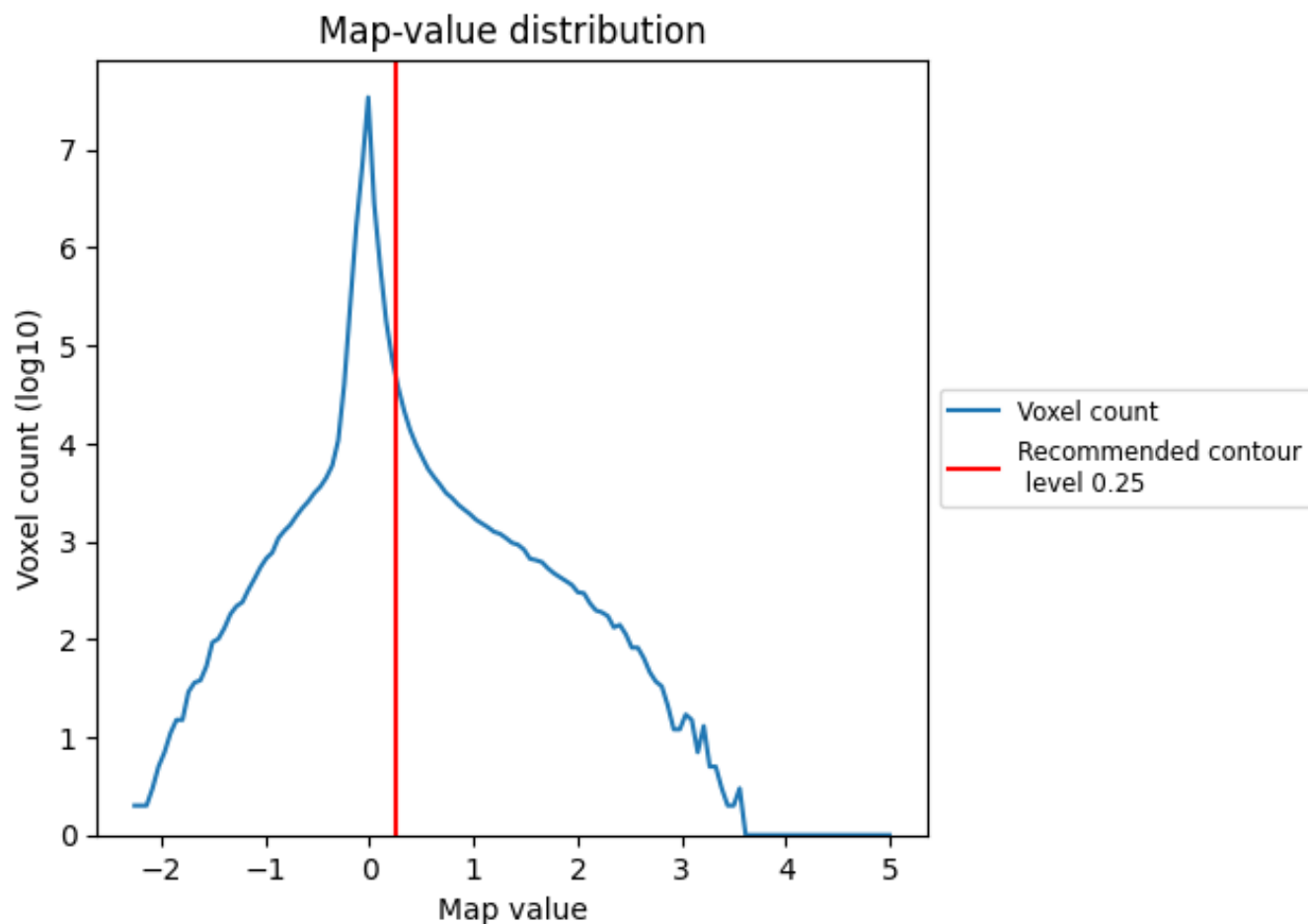
## 2.6 Mask visualisation [i](#)

This section was not generated. No masks/segmentation were deposited.

### 3 Map analysis [i](#)

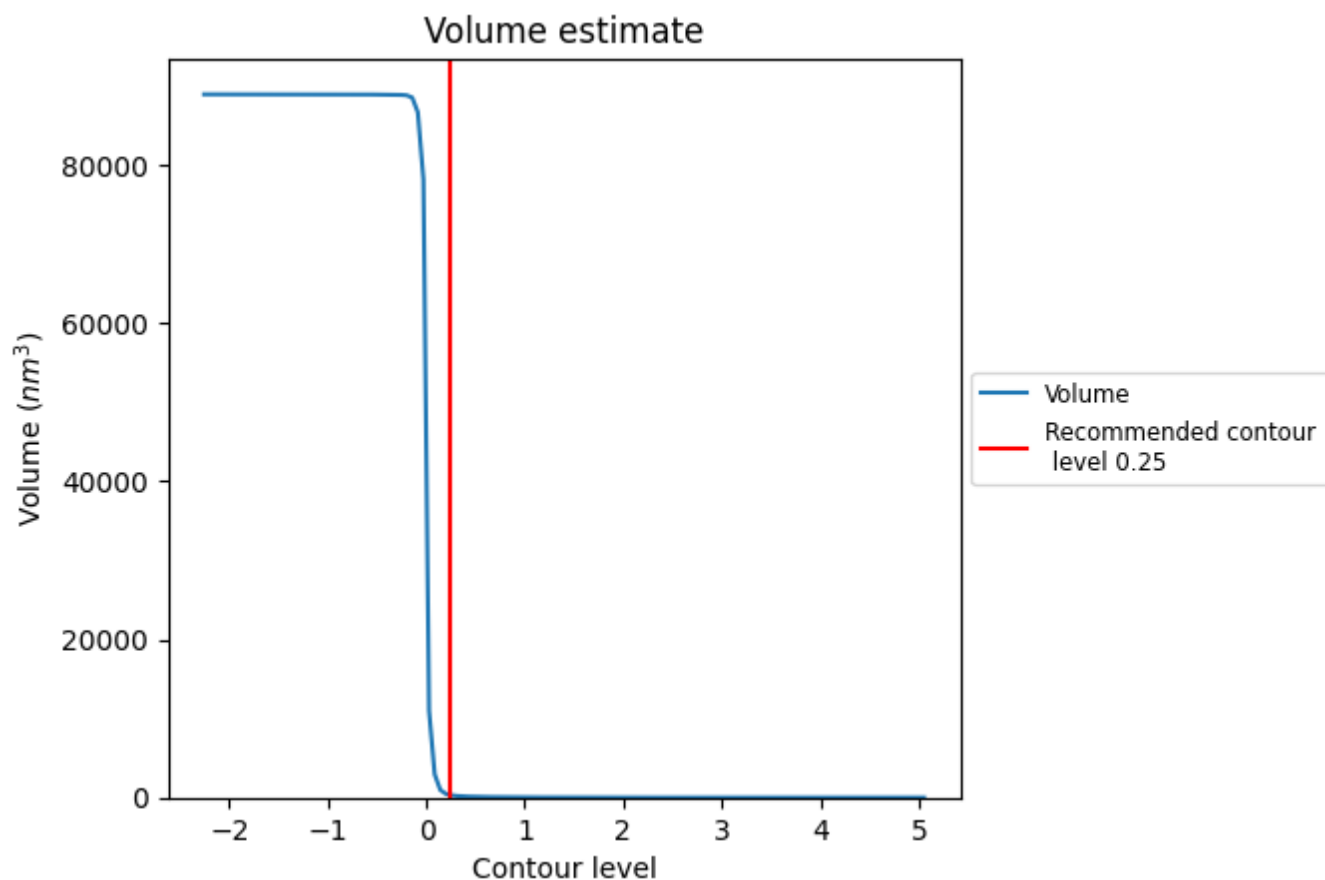
This section contains the results of statistical analysis of the map.

#### 3.1 Map-value distribution [i](#)



The map-value distribution is plotted in 128 intervals along the x-axis. The y-axis is logarithmic. A spike in this graph at zero usually indicates that the volume has been masked.

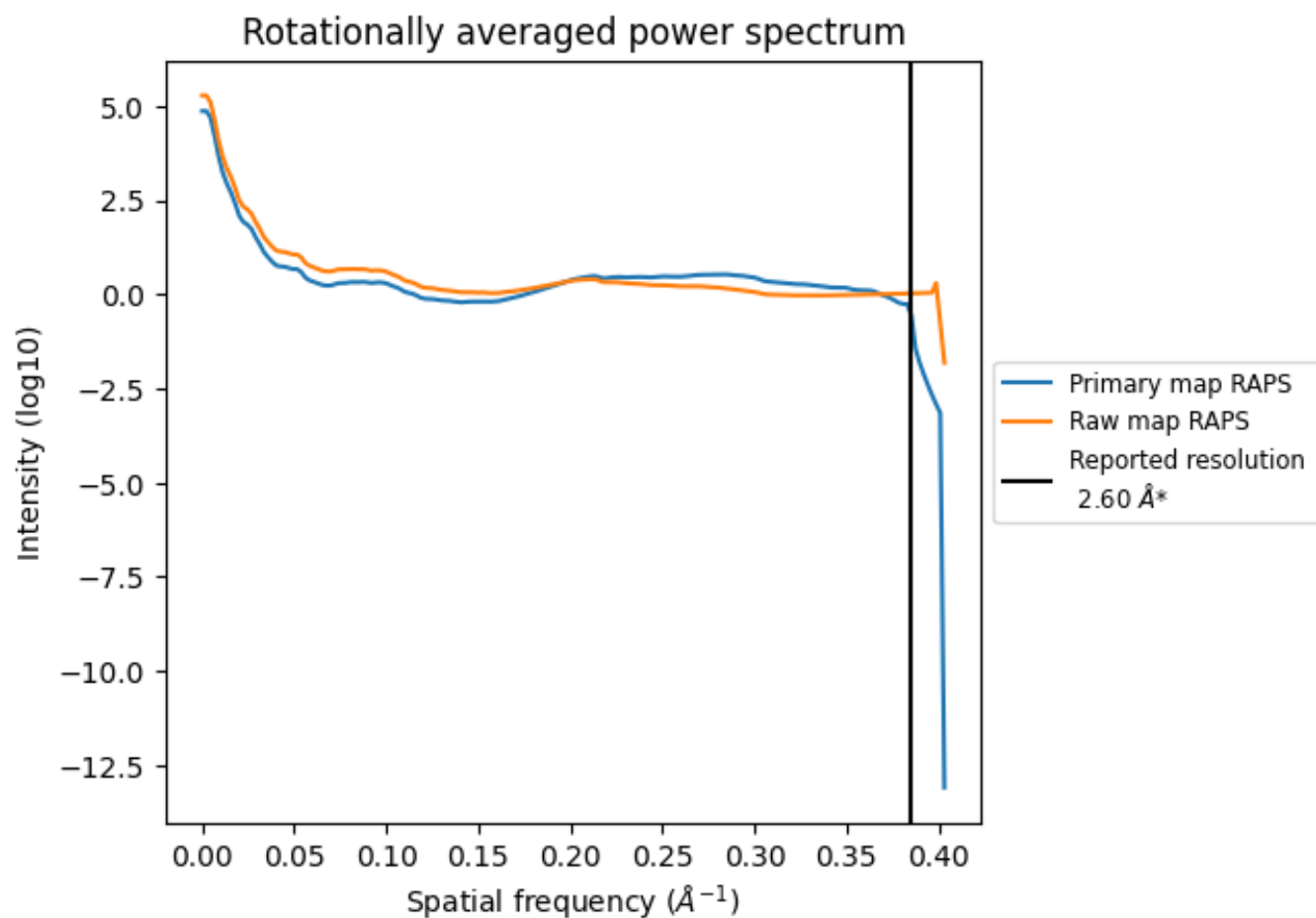
### 3.2 Volume estimate [i](#)



The volume at the recommended contour level is 313 nm<sup>3</sup>; this corresponds to an approximate mass of 282 kDa.

The volume estimate graph shows how the enclosed volume varies with the contour level. The recommended contour level is shown as a vertical line and the intersection between the line and the curve gives the volume of the enclosed surface at the given level.

### 3.3 Rotationally averaged power spectrum ⓘ

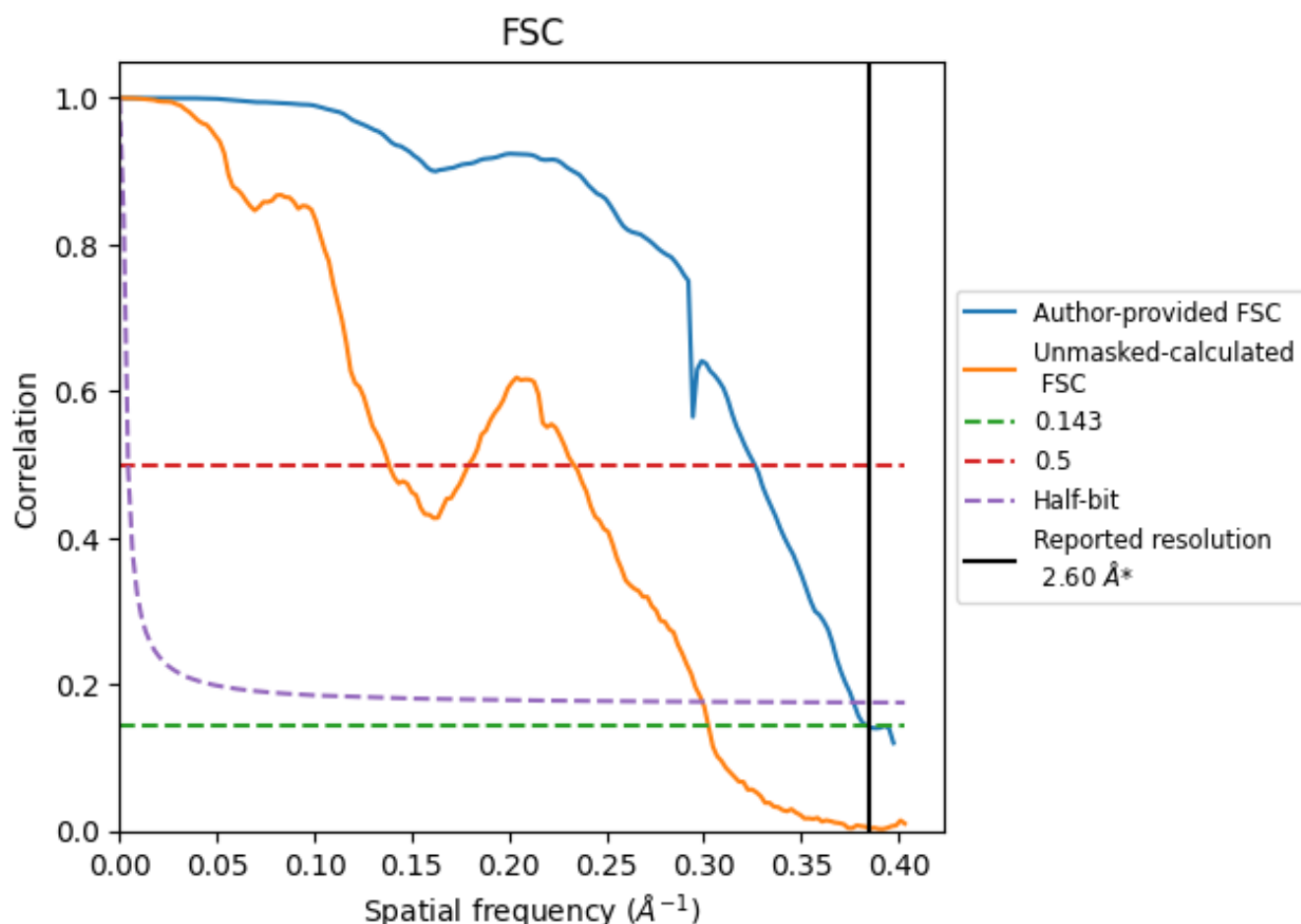


\*Reported resolution corresponds to spatial frequency of 0.385 Å<sup>-1</sup>

## 4 Fourier-Shell correlation [i](#)

Fourier-Shell Correlation (FSC) is the most commonly used method to estimate the resolution of single-particle and subtomogram-averaged maps. The shape of the curve depends on the imposed symmetry, mask and whether or not the two 3D reconstructions used were processed from a common reference. The reported resolution is shown as a black line. A curve is displayed for the half-bit criterion in addition to lines showing the 0.143 gold standard cut-off and 0.5 cut-off.

### 4.1 FSC [i](#)



\*Reported resolution corresponds to spatial frequency of 0.385 Å<sup>-1</sup>

## 4.2 Resolution estimates [i](#)

Resolution estimate (Å)	Estimation criterion (FSC cut-off)		
	0.143	0.5	Half-bit
Reported by author	2.60	-	-
Author-provided FSC curve	2.60	3.07	2.65
Unmasked-calculated*	3.31	7.23	3.34

\*Resolution estimate based on FSC curve calculated by comparison of deposited half-maps. The value from deposited half-maps intersecting FSC 0.143 CUT-OFF 3.31 differs from the reported value 2.6 by more than 10 %