



wwPDB EM Validation Summary Report ⓘ

Mar 31, 2021 – 10:35 am BST

EMDB ID : EMD-2101
Title : Electron tomography of forming Hepatitis C virus-like particles in insect cells.
Authors : Badia-Martinez, D.; Peralta, B.; Andres, G.; Guerra, M.; Gil-Carton, D.; Abrescia, N.G.
Deposited on : 2012-05-16
Resolution : Not provided

This is a wwPDB EM Validation Summary Report for a publicly released PDB entry.

We welcome your comments at validation@mail.wwpdb.org

A user guide is available at

<https://www.wwpdb.org/validation/2017/EMTomogramValidationReportHelp>

with specific help available everywhere you see the ⓘ symbol.

The following versions of software and data (see [references ⓘ](#)) were used in the production of this report:

EMDB validation analysis : 0.0.0.dev75
Validation Pipeline (wwPDB-VP) : 2.18

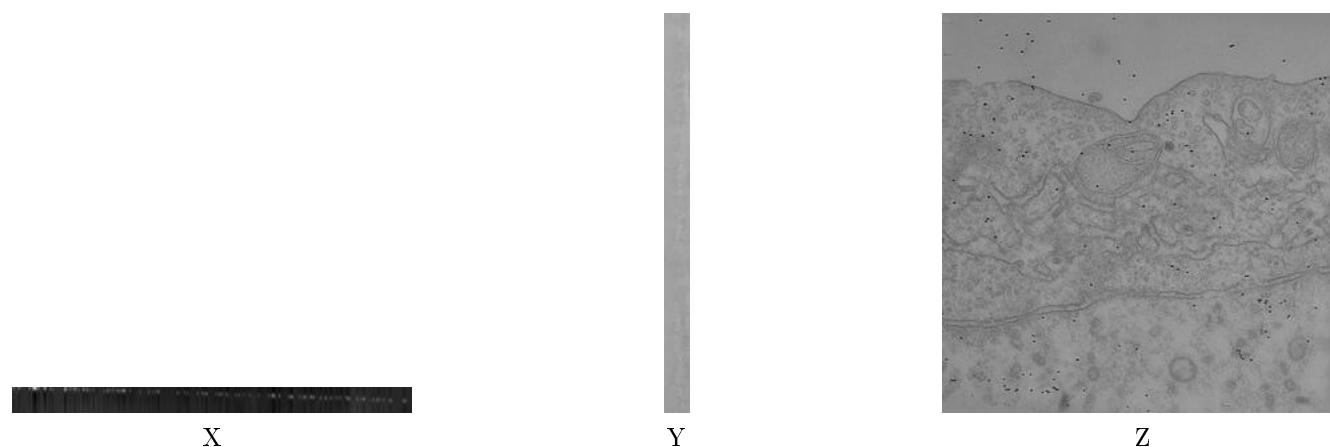
1 Experimental information ⓘ

| Property | Value | Source |
|--------------------------------------|-----------------------------|-----------|
| EM reconstruction method | TOMOGRAPHY | Depositor |
| Imposed symmetry | Not Provided | |
| Number of tilted images used | 126 | Depositor |
| Resolution determination method | Not provided | |
| CTF correction method | Not provided | |
| Microscope | JEOL 2200FS | Depositor |
| Voltage (kV) | 200 | Depositor |
| Electron dose ($e^-/\text{\AA}^2$) | Not provided | |
| Minimum defocus (nm) | -5.0 | Depositor |
| Maximum defocus (nm) | -7.0 | Depositor |
| Magnification | 25000.0 | Depositor |
| Image detector | TVIPS TEMCAM-F416 (4k x 4k) | Depositor |
| Maximum voxel value | 180.934 | Depositor |
| Minimum voxel value | 0.000 | Depositor |
| Average voxel value | 15.305 | Depositor |
| Voxel value standard deviation | 4.211 | Depositor |
| Recommended contour level | Not applicable | |
| Tomogram size (Å) | 19374.08, 19374.08, 1191.96 | wwPDB |
| Tomogram dimensions | 2048, 2048, 126 | wwPDB |
| Tomogram angles (°) | 90.0, 90.0, 90.0 | wwPDB |
| Grid spacing (Å) | 9.46, 9.46, 9.46 | Depositor |

2 Tomogram visualisation [i](#)

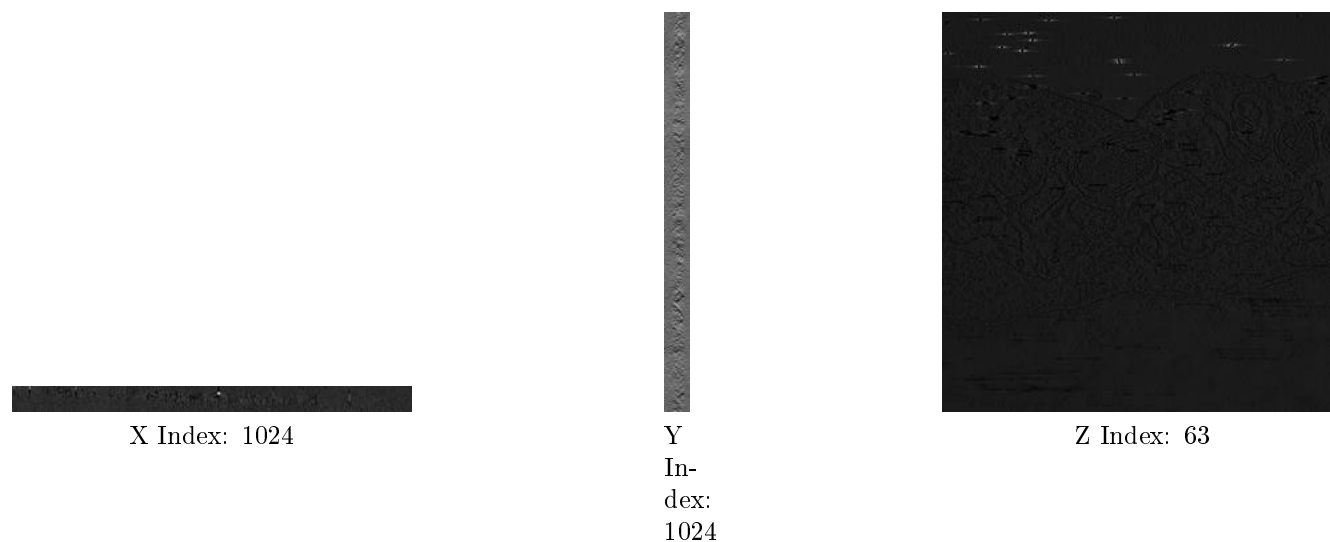
This section contains visualisations of the EMDB entry EMD-2101. These allow visual inspection of the internal detail of the tomogram and identification of artifacts.

2.1 Orthogonal projections [i](#)



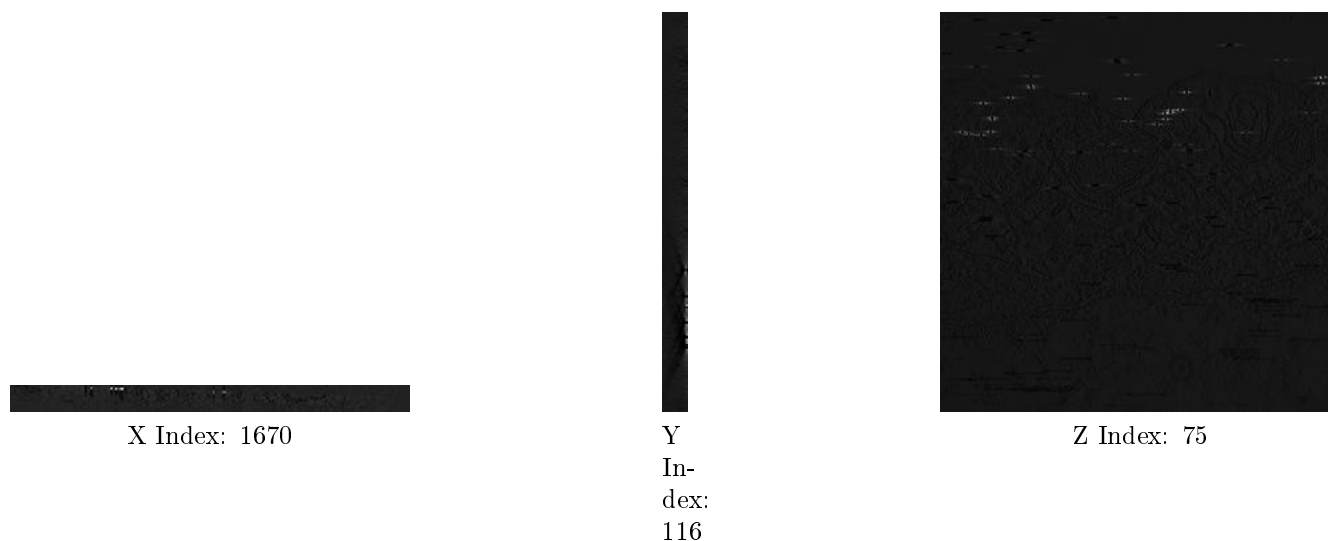
The images above show the tomogram projected in three orthogonal directions.

2.2 Central slices [i](#)



The images above show central slices of the tomogram in three orthogonal directions.

2.3 Largest variance slices [i](#)



The images above show the largest variance slices of the tomogram in three orthogonal directions.

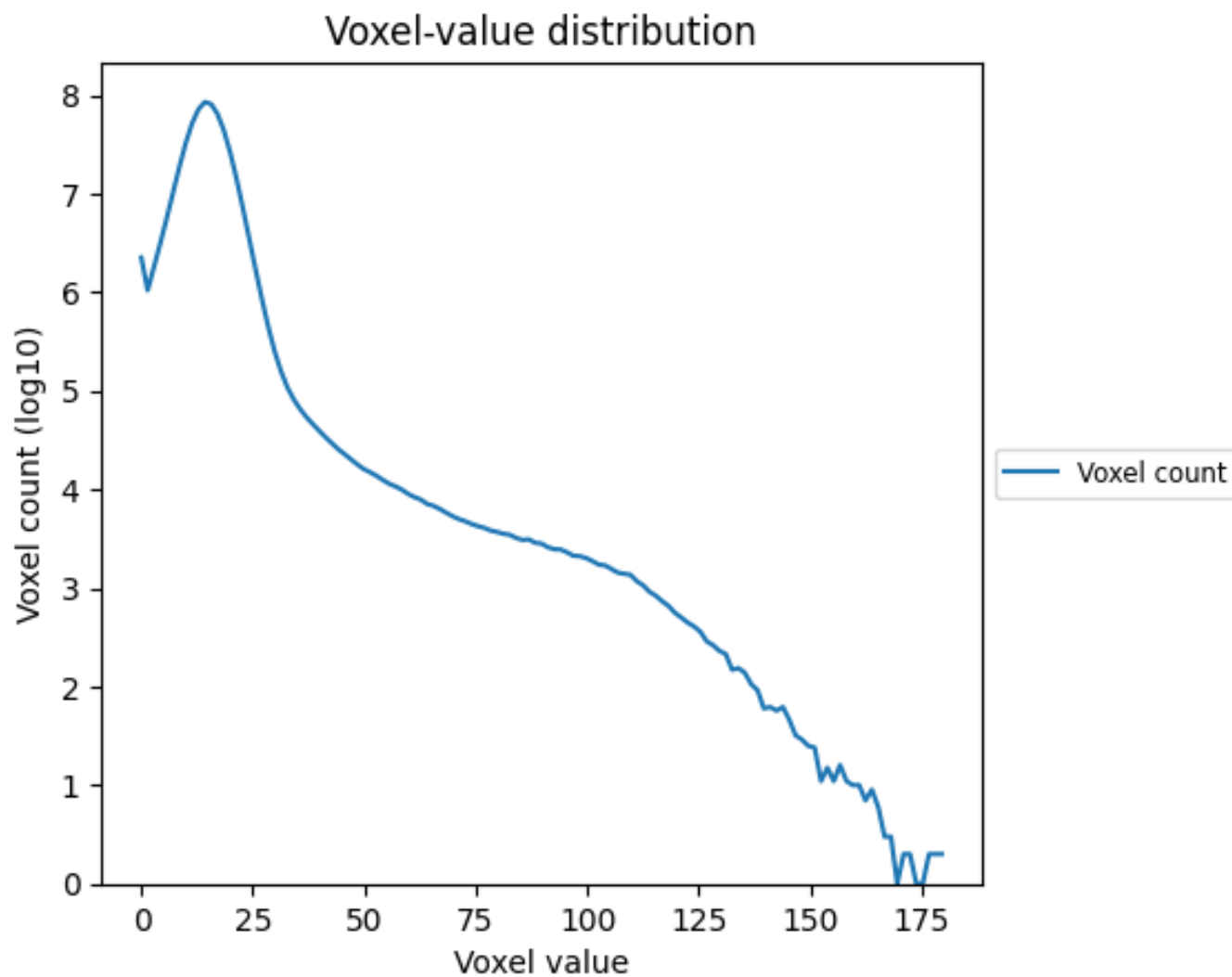
2.4 Mask visualisation [i](#)

This section was not generated. No masks/segmentation were deposited.

3 Tomogram analysis [i](#)

This section contains the results of statistical analysis of the tomogram.

3.1 Voxel-value distribution [i](#)



The voxel-value distribution is plotted in 128 intervals along the x-axis. The y-axis is logarithmic.