



## Full wwPDB EM Validation Report ⓘ

Jan 10, 2024 – 08:21 PM EST

EMDB ID : EMD-26204  
Title : Ciliary 96-nm repeat unit from *Salpingoeca rosetta* (choanoflagellate), generated via cryo-electron tomography and subtomogram averaging  
Authors : Pinskey, J.M.; Nicastro, D.  
Deposited on : 2022-02-15  
Resolution : 22.00 Å(reported)

This is a Full wwPDB EM Validation Report for a publicly released PDB entry.

We welcome your comments at [validation@mail.wwpdb.org](mailto:validation@mail.wwpdb.org)

A user guide is available at

<https://www.wwpdb.org/validation/2017/EMTomogramValidationReportHelp>  
with specific help available everywhere you see the ⓘ symbol.

The types of validation reports are described at

<http://www.wwpdb.org/validation/2017/FAQs#types>.

---

The following versions of software and data (see [references ⓘ](#)) were used in the production of this report:

EMDB validation analysis : 0.0.1.dev70  
Validation Pipeline (wwPDB-VP) : 2.36

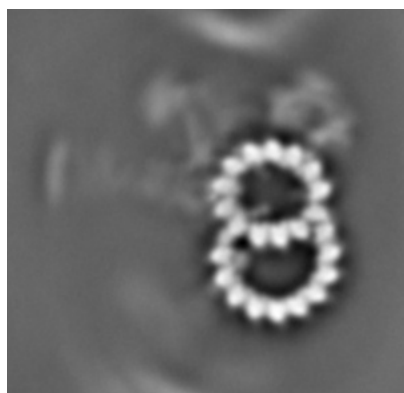
# 1 Experimental information

Property	Value	Source
EM reconstruction method	TOMOGRAPHY	Depositor
Imposed symmetry	Not Provided	
Number of tilted images used	61	Depositor
Resolution determination method	FSC 0.5 CUT-OFF	Depositor
CTF correction method	Not provided	
Microscope	FEI TITAN KRIOS	Depositor
Voltage (kV)	300	Depositor
Electron dose ( $e^-/\text{\AA}^2$ )	1.6	Depositor
Minimum defocus (nm)	0.5	Depositor
Maximum defocus (nm)	0.5	Depositor
Magnification	Not provided	
Image detector	GATAN K3 BIOQUANTUM (6k x 4k)	Depositor
Maximum voxel value	135.139	Depositor
Minimum voxel value	123.119	Depositor
Average voxel value	128.440	Depositor
Voxel value standard deviation	1.138	Depositor
Recommended contour level	Not applicable	
Tomogram size ( $\text{\AA}$ )	1197.38, 913.79, 882.28	wwPDB
Tomogram dimensions	380, 290, 280	wwPDB
Tomogram angles ( $^\circ$ )	90.0, 90.0, 90.0	wwPDB
Grid spacing ( $\text{\AA}$ )	3.151, 3.151, 3.151	Depositor

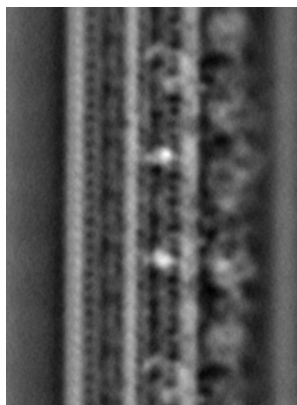
## 2 Tomogram visualisation [i](#)

This section contains visualisations of the EMDB entry EMD-26204. These allow visual inspection of the internal detail of the tomogram and identification of artifacts.

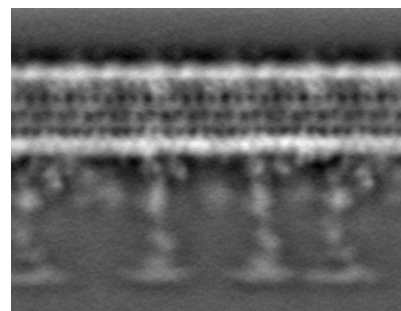
### 2.1 Orthogonal projections [i](#)



X



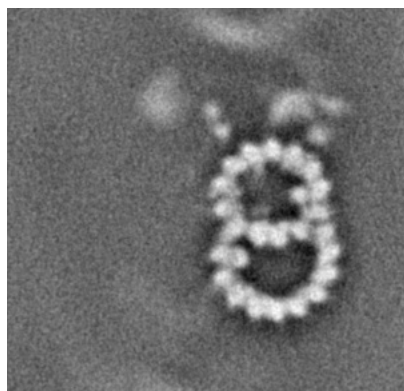
Y



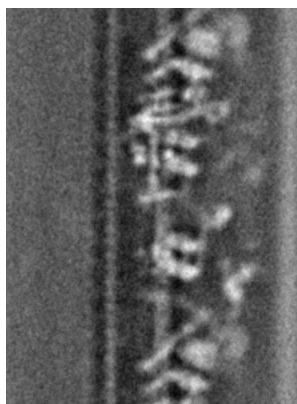
Z

The images above show the tomogram projected in three orthogonal directions.

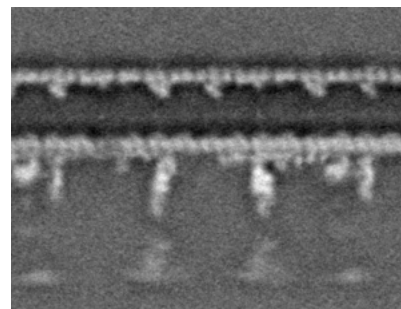
### 2.2 Central slices [i](#)



X Index: 190



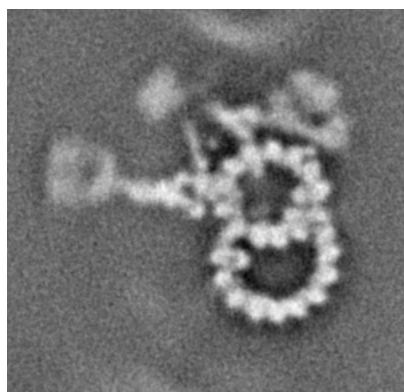
Y Index: 145



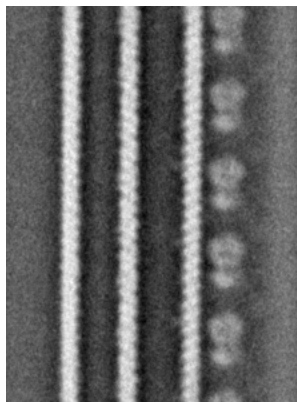
Z Index: 140

The images above show central slices of the tomogram in three orthogonal directions.

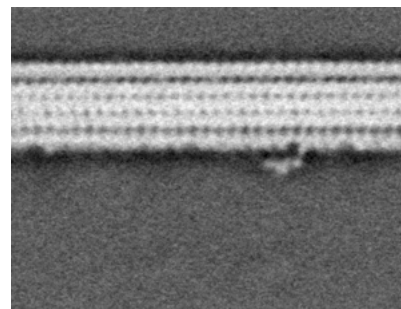
## 2.3 Largest variance slices [i](#)



X Index: 139



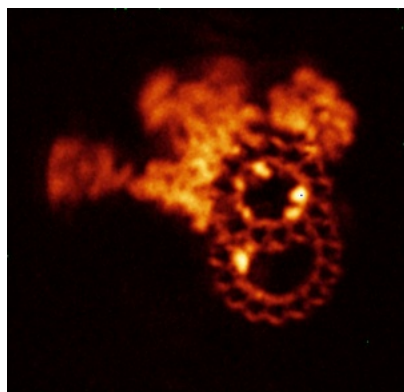
Y Index: 195



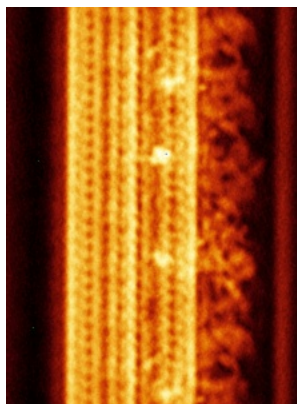
Z Index: 118

The images above show the largest variance slices of the tomogram in three orthogonal directions.

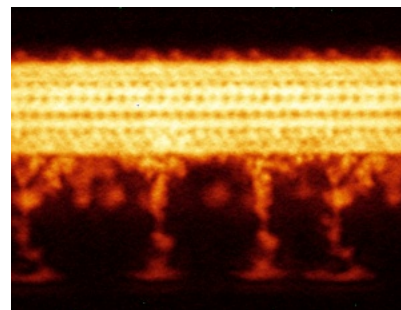
## 2.4 Orthogonal standard-deviation projections (False-color) [i](#)



X



Y



Z

The images above show the tomogram projected in three orthogonal directions.

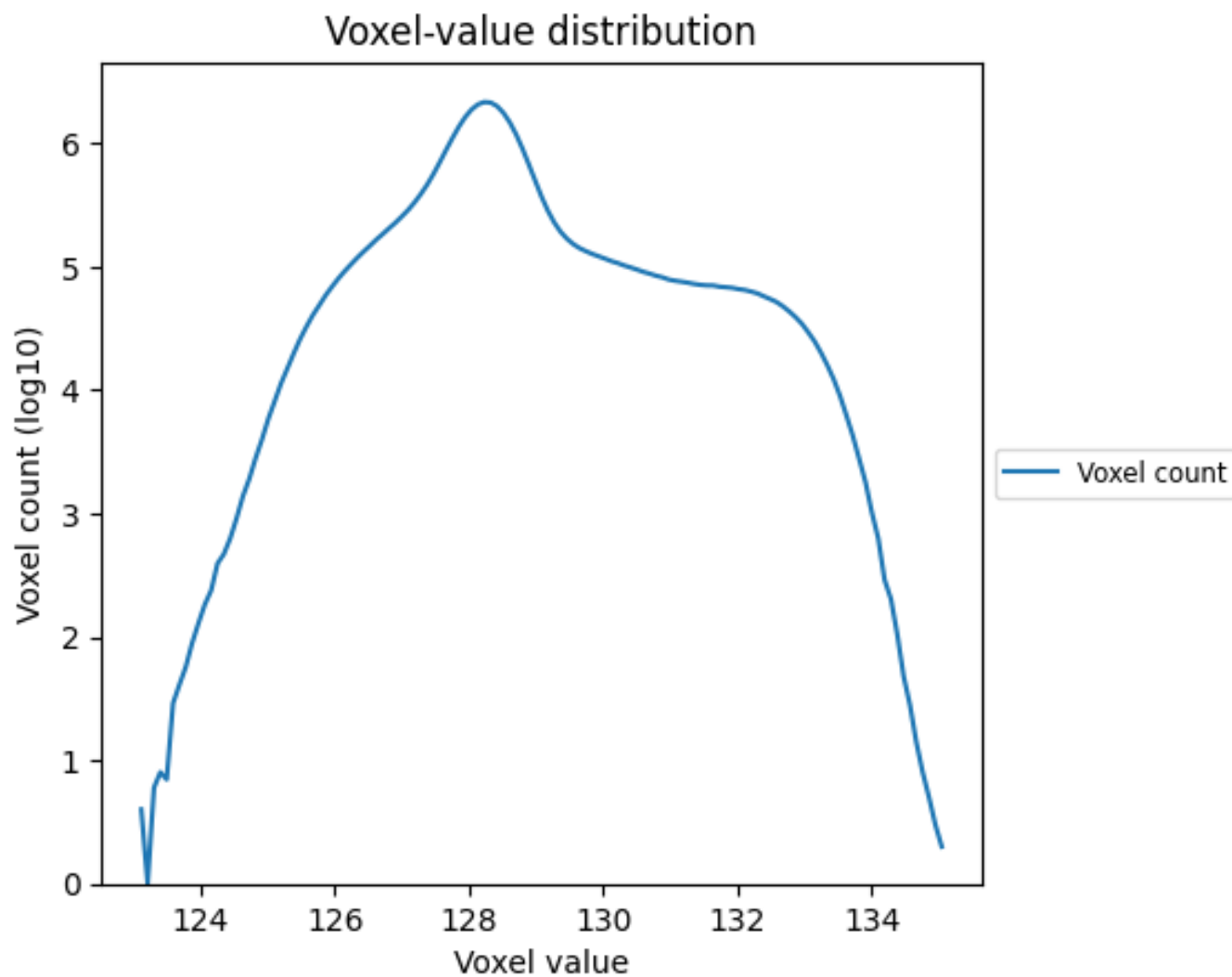
## 2.5 Mask visualisation [i](#)

This section was not generated. No masks/segmentation were deposited.

### 3 Tomogram analysis [i](#)

This section contains the results of statistical analysis of the tomogram.

#### 3.1 Voxel-value distribution [i](#)



The voxel-value distribution is plotted in 128 intervals along the x-axis. The y-axis is logarithmic.