



## wwPDB EM Validation Summary Report ⓘ

Jun 28, 2021 – 12:06 PM JST

EMDB ID : EMD-30365  
Title : Cryo-electron tomography of an inhibitory synapse in cultured rat hippocampal neurons  
Authors : Tao, C.-L.; Liu, Y.-T.; Sun, R.; Zhang, B.; Qi, L.; Shivakoti, S.; Tian, C.-L.; Zhang, P.; Lau, P.-M.; Zhou, Z.H.; Bi, G.-Q.  
Deposited on : 2020-07-02  
Resolution : Not provided

This is a wwPDB EM Validation Summary Report for a publicly released PDB entry.

We welcome your comments at [validation@mail.wwpdb.org](mailto:validation@mail.wwpdb.org)

A user guide is available at

<https://www.wwpdb.org/validation/2017/EMTomogramValidationReportHelp>  
with specific help available everywhere you see the ⓘ symbol.

---

The following versions of software and data (see [references ⓘ](#)) were used in the production of this report:

EMDB validation analysis : 0.0.0.dev75  
Validation Pipeline (wwPDB-VP) : 2.20

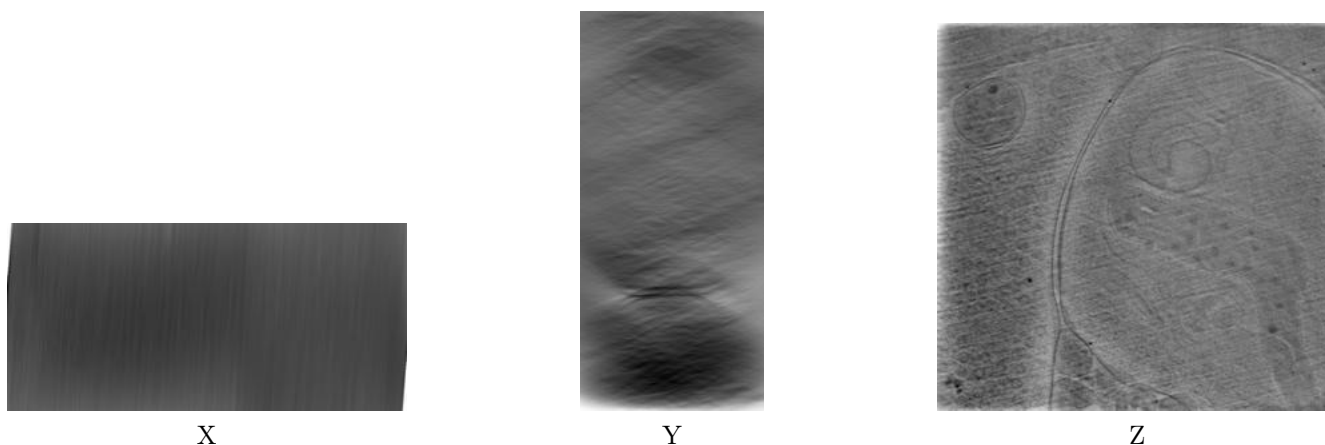
# 1 Experimental information

| Property                             | Value                      | Source    |
|--------------------------------------|----------------------------|-----------|
| EM reconstruction method             | TOMOGRAPHY                 | Depositor |
| Imposed symmetry                     | Not Provided               |           |
| Number of tilted images used         | 64                         | Depositor |
| Resolution determination method      | Not provided               |           |
| CTF correction method                | Not provided               |           |
| Microscope                           | FEI TITAN KRIOS            | Depositor |
| Voltage (kV)                         | 300                        | Depositor |
| Electron dose ( $e^-/\text{\AA}^2$ ) | 2.5                        | Depositor |
| Minimum defocus (nm)                 | 0.5                        | Depositor |
| Maximum defocus (nm)                 | 1.0                        | Depositor |
| Magnification                        | Not provided               |           |
| Image detector                       | GATAN K2 QUANTUM (4k x 4k) | Depositor |
| Maximum voxel value                  | 127.000                    | Depositor |
| Minimum voxel value                  | -128.000                   | Depositor |
| Average voxel value                  | 69.182                     | Depositor |
| Voxel value standard deviation       | 7.763                      | Depositor |
| Recommended contour level            | Not applicable             |           |
| Tomogram size ( $\text{\AA}$ )       | 16704.0, 16182.0, 7595.1   | wwPDB     |
| Tomogram dimensions                  | 640, 620, 291              | wwPDB     |
| Tomogram angles ( $^\circ$ )         | 90.0, 90.0, 90.0           | wwPDB     |
| Grid spacing ( $\text{\AA}$ )        | 26.1, 26.1, 26.1           | Depositor |

## 2 Tomogram visualisation [i](#)

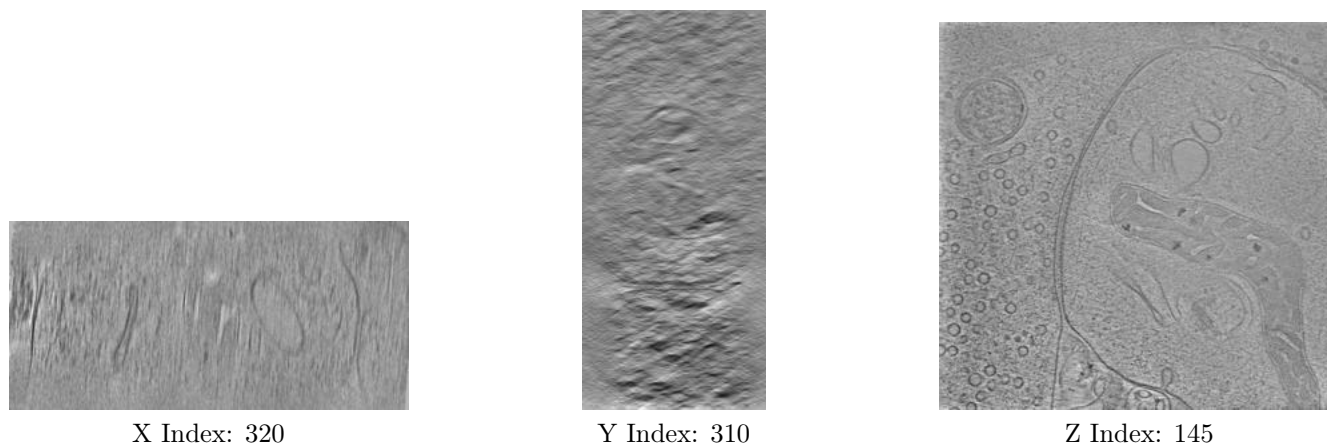
This section contains visualisations of the EMDB entry EMD-30365. These allow visual inspection of the internal detail of the tomogram and identification of artifacts.

### 2.1 Orthogonal projections [i](#)



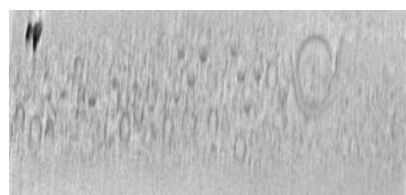
The images above show the tomogram projected in three orthogonal directions.

### 2.2 Central slices [i](#)

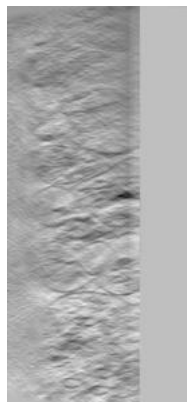


The images above show central slices of the tomogram in three orthogonal directions.

## 2.3 Largest variance slices [i](#)



X Index: 33



Y Index: 0



Z Index: 178

The images above show the largest variance slices of the tomogram in three orthogonal directions.

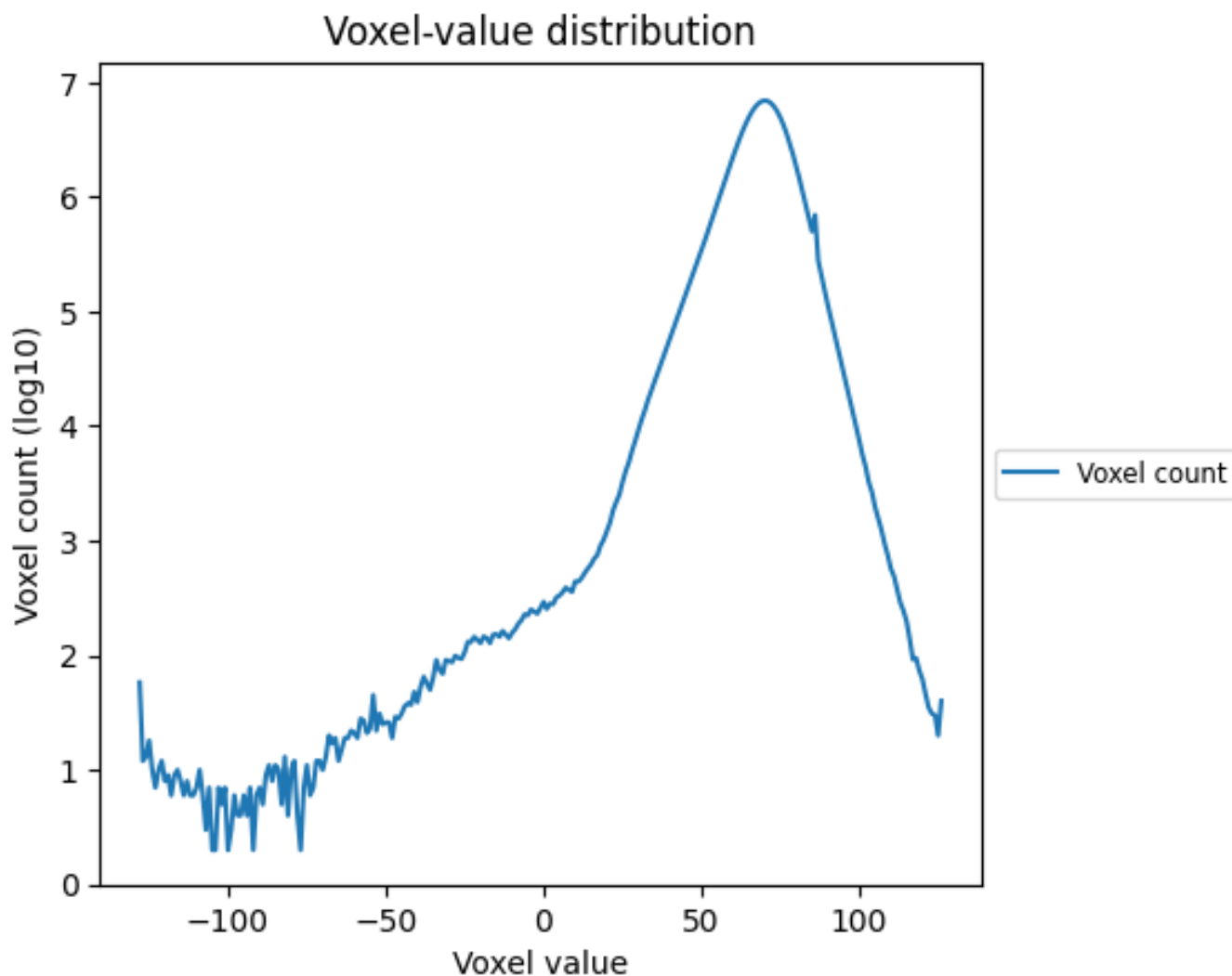
## 2.4 Mask visualisation [i](#)

This section was not generated. No masks/segmentation were deposited.

### 3 Tomogram analysis [i](#)

This section contains the results of statistical analysis of the tomogram.

#### 3.1 Voxel-value distribution [i](#)



The voxel-value distribution is plotted in 128 intervals along the x-axis. The y-axis is logarithmic.