



## Full wwPDB EM Validation Report ⓘ

Mar 31, 2021 – 10:41 am BST

EMDB ID : EMD-3405  
Title : Mammalian 80S Ribosomes Associate with a Novel Vesicular Organelle  
Authors : Carter, S.D.; Hampton, C.M.; Langlois, R.; Grassucci, R.A.; Farino, Z.J.; Morgenstern, T.M.; Rice, W.J.; Velasco, K.R.; Wigge, C.; Xu, Y.; Koller, A.; Melero, R.; Mitchell, W.G.; Yi, E.; Aguilar, J.I.; Levy, E.S.; Greenberg, N.L.; Li, W.; Courel, M.; Mahata, S.K.; Freyberg, R.; Javitch, J.A.; Di Paolo, G.; Chen, E.I.; Chan, R.B.; Carazo, J.M.; Area-Gomez, E.; Jensen, G.J.; Frank, J.; Freyberg, Z.  
Deposited on : 2016-03-30  
Resolution : Not provided

This is a Full wwPDB EM Validation Report for a publicly released PDB entry.

We welcome your comments at [validation@mail.wwpdb.org](mailto:validation@mail.wwpdb.org)

A user guide is available at

<https://www.wwpdb.org/validation/2017/EMMapValidationReportHelp>

with specific help available everywhere you see the ⓘ symbol.

---

The following versions of software and data (see [references ⓘ](#)) were used in the production of this report:

EMDB validation analysis : 0.0.0.dev75  
Validation Pipeline (wwPDB-VP) : 2.18

# 1 Experimental information

Property	Value	Source
EM reconstruction method	SUBTOMOGRAM AVERAGING	Depositor
Imposed symmetry	Not Provided	
Number of subtomograms used	1230	Depositor
Resolution determination method	OTHER	Depositor
CTF correction method	Not provided	
Microscope	FEI POLARA 300	Depositor
Voltage (kV)	300	Depositor
Electron dose ( $e^-/\text{\AA}^2$ )	100	Depositor
Minimum defocus (nm)	6.0	Depositor
Maximum defocus (nm)	6.0	Depositor
Magnification	18977.0	Depositor
Image detector	GATAN K2 SUMMIT (4k x 4k)	Depositor
Maximum map value	122.881	Depositor
Minimum map value	0.000	Depositor
Average map value	3.255	Depositor
Map value standard deviation	11.726	Depositor
Recommended contour level	12.0	Depositor
Map size (Å)	576.39996, 576.39996, 576.39996	wwPDB
Map dimensions	220, 220, 220	wwPDB
Map angles (°)	90.0, 90.0, 90.0	wwPDB
Pixel spacing (Å)	2.62, 2.62, 2.62	Depositor

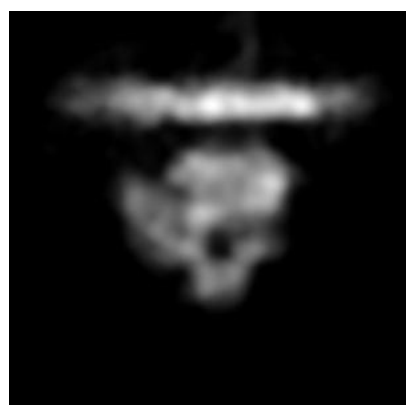
## 2 Map visualisation [i](#)

This section contains visualisations of the EMDB entry EMD-3405. These allow visual inspection of the internal detail of the map and identification of artifacts.

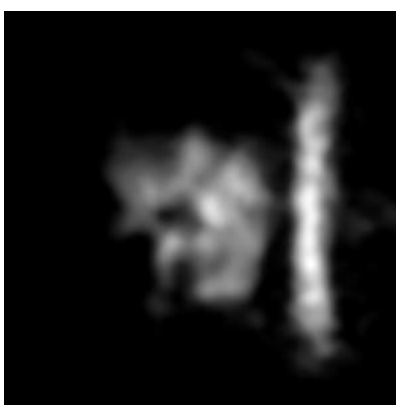
No raw map or half-maps were deposited for this entry and therefore no images, graphs, etc. pertaining to the raw map can be shown.

### 2.1 Orthogonal projections [i](#)

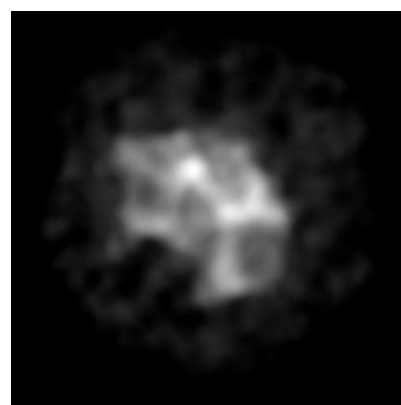
#### 2.1.1 Primary map



X



Y

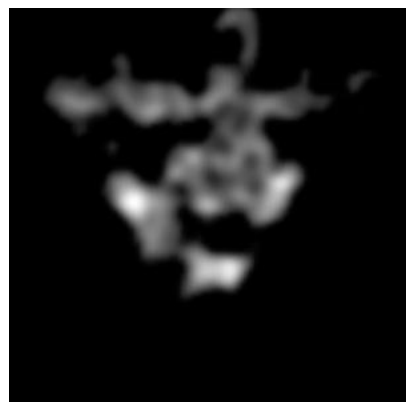


Z

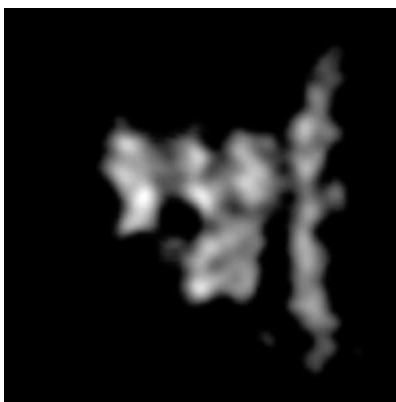
The images above show the map projected in three orthogonal directions.

### 2.2 Central slices [i](#)

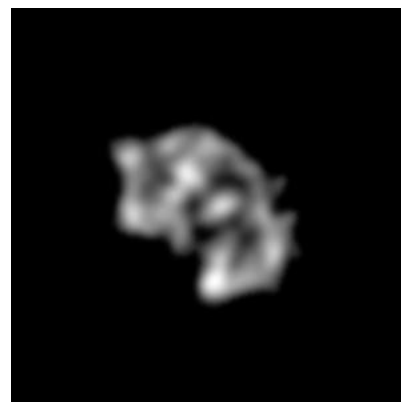
#### 2.2.1 Primary map



X Index: 110



Y Index: 110

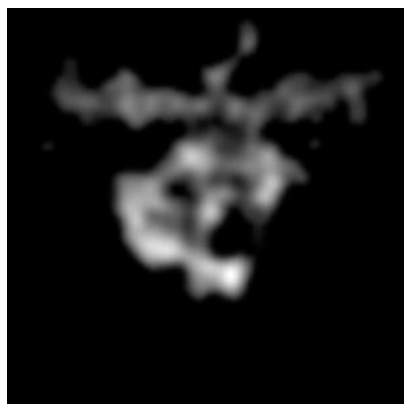


Z Index: 110

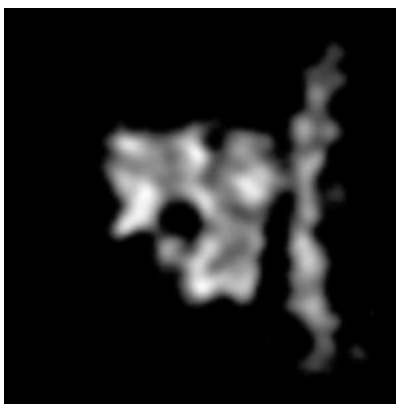
The images above show central slices of the map in three orthogonal directions.

## 2.3 Largest variance slices [i](#)

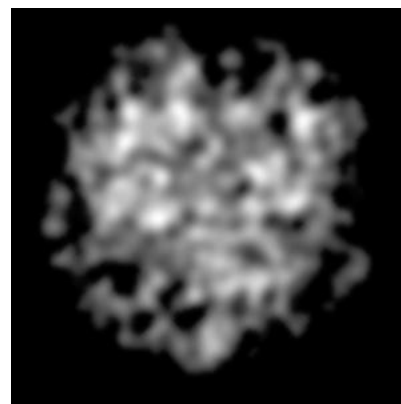
### 2.3.1 Primary map



X Index: 118



Y Index: 107

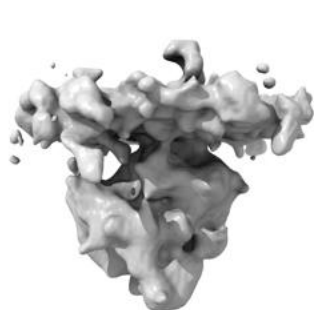


Z Index: 168

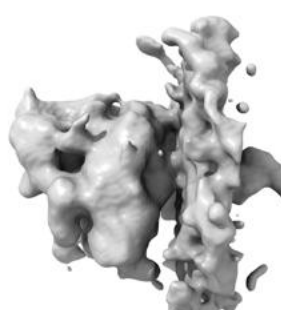
The images above show the largest variance slices of the map in three orthogonal directions.

## 2.4 Orthogonal surface views [i](#)

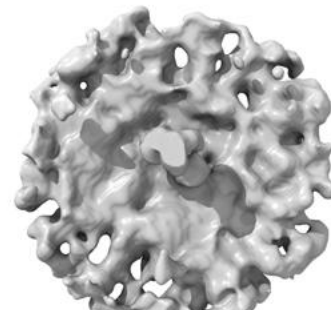
### 2.4.1 Primary map



X



Y



Z

The images above show the 3D surface view of the map at the recommended contour level 12.0. These images, in conjunction with the slice images, may facilitate assessment of whether an appropriate contour level has been provided.

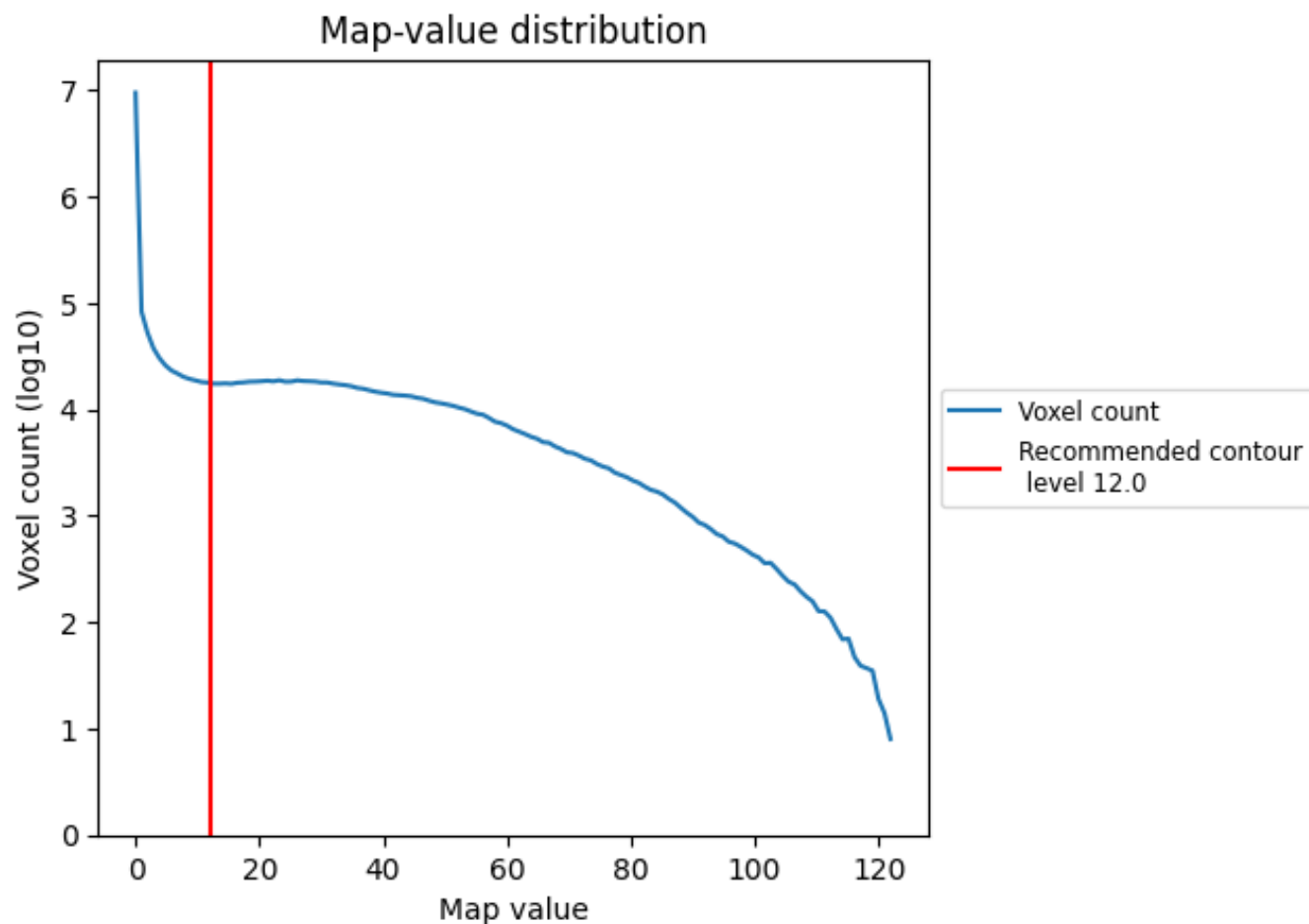
## 2.5 Mask visualisation

This section was not generated. No masks/segmentation were deposited.

### 3 Map analysis [i](#)

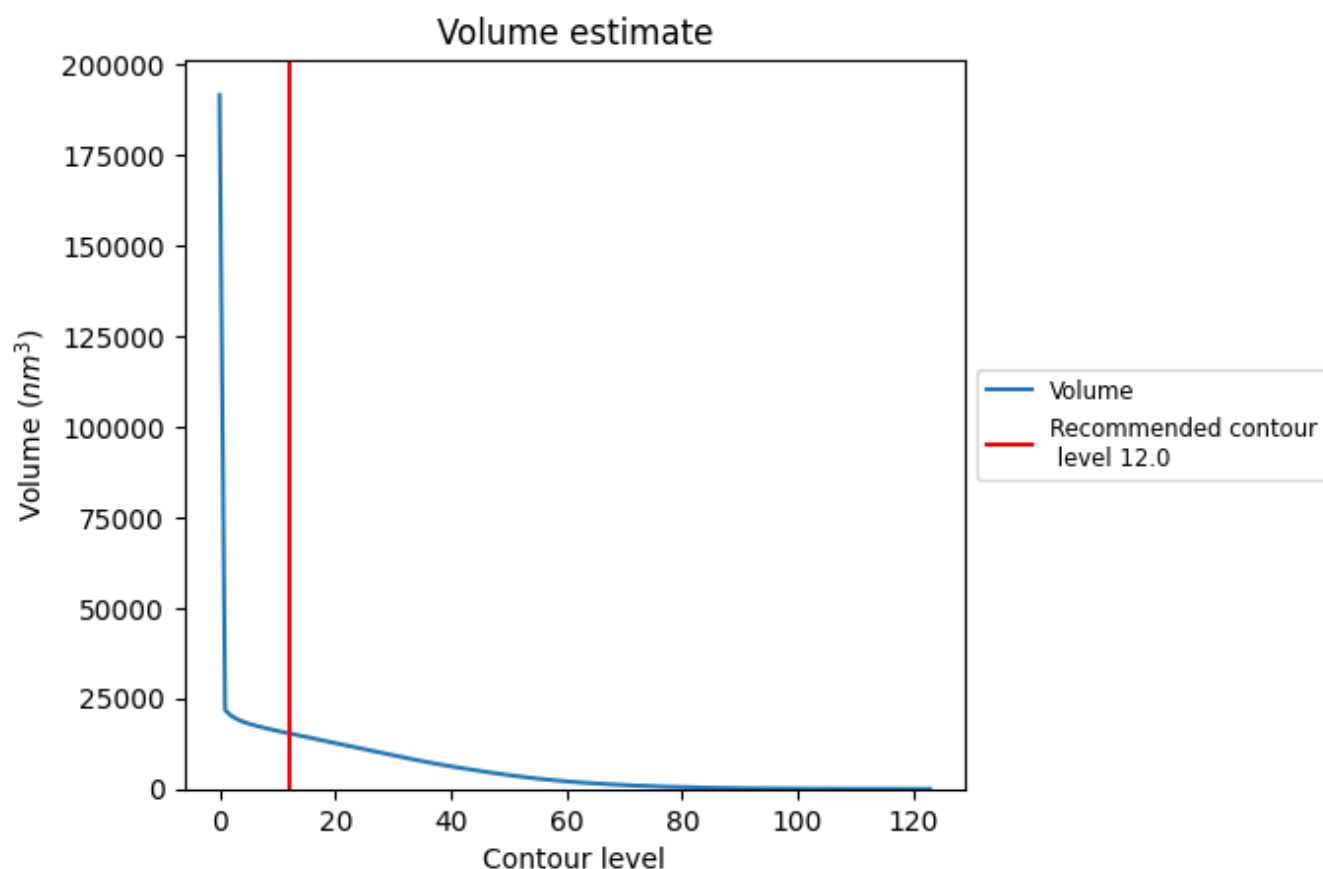
This section contains the results of statistical analysis of the map.

#### 3.1 Map-value distribution [i](#)



The map-value distribution is plotted in 128 intervals along the x-axis. The y-axis is logarithmic. A spike in this graph at zero usually indicates that the volume has been masked.

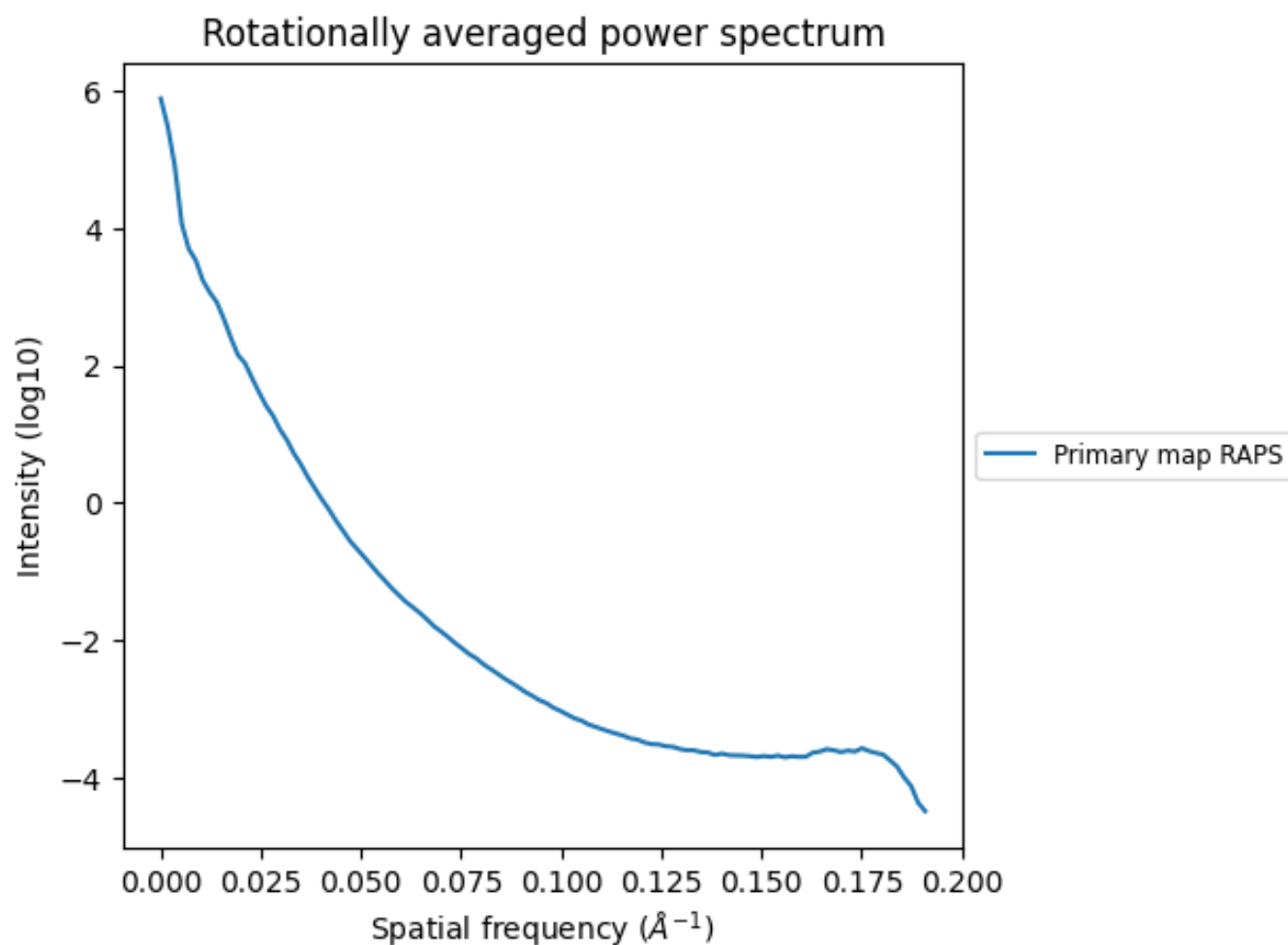
### 3.2 Volume estimate [i](#)



The volume at the recommended contour level is 15352 nm<sup>3</sup>; this corresponds to an approximate mass of 13868 kDa.

The volume estimate graph shows how the enclosed volume varies with the contour level. The recommended contour level is shown as a vertical line and the intersection between the line and the curve gives the volume of the enclosed surface at the given level.

### 3.3 Rotationally averaged power spectrum ⓘ





## 4 Fourier-Shell correlation ⓘ

This section was not generated. No FSC curve or half-maps provided.