



## wwPDB EM Validation Summary Report ⓘ

Dec 6, 2020 – 12:27 PM EST

EMDB ID : EMD-5155  
Title : Bovine Papillomavirus Type 1 (BPV1) cryo-EM reconstruction at 4.2Å resolution (asymmetric unit and surrounding density only)  
Authors : Wolf, M.; Garcea, R.L.; Grigorieff, N.; Harrison, S.C.  
Deposited on : 2009-12-14  
Resolution : 4.20 Å(reported)

This is a wwPDB EM Validation Summary Report for a publicly released PDB entry.

We welcome your comments at [validation@mail.wwpdb.org](mailto:validation@mail.wwpdb.org)

A user guide is available at

<https://www.wwpdb.org/validation/2017/EMMapValidationReportHelp>

with specific help available everywhere you see the ⓘ symbol.

---

The following versions of software and data (see [references ⓘ](#)) were used in the production of this report:

EMDB validation analysis : 0.0.0.dev61  
Validation Pipeline (wwPDB-VP) : 2.15.1

# 1 Experimental information

Property	Value	Source
EM reconstruction method	SINGLE PARTICLE	Depositor
Imposed symmetry	Not Provided	
Number of particles used	3997	Depositor
Resolution determination method	FSC 0.143 CUT-OFF	Depositor
CTF correction method	ctfilt3 with individual particle adjustment	Depositor
Microscope	FEI TECNAI F30	Depositor
Voltage (kV)	300	Depositor
Electron dose ( $e^-/\text{\AA}^2$ )	25	Depositor
Minimum defocus (nm)	1.8	Depositor
Maximum defocus (nm)	2.9	Depositor
Magnification	56588.0	Depositor
Image detector	KODAK SO-163 FILM	Depositor
Maximum map value	9.433	Depositor
Minimum map value	-3.877	Depositor
Average map value	0.125	Depositor
Map value standard deviation	0.784	Depositor
Recommended contour level	2.6	Depositor
Map size ( $\text{\AA}$ )	633.35, 633.35, 633.35	wwPDB
Map dimensions	285, 287, 272	wwPDB
Map angles ( $^\circ$ )	90, 90, 90	wwPDB
Pixel spacing ( $\text{\AA}$ )	1.23701, 1.23701, 1.23701	Depositor

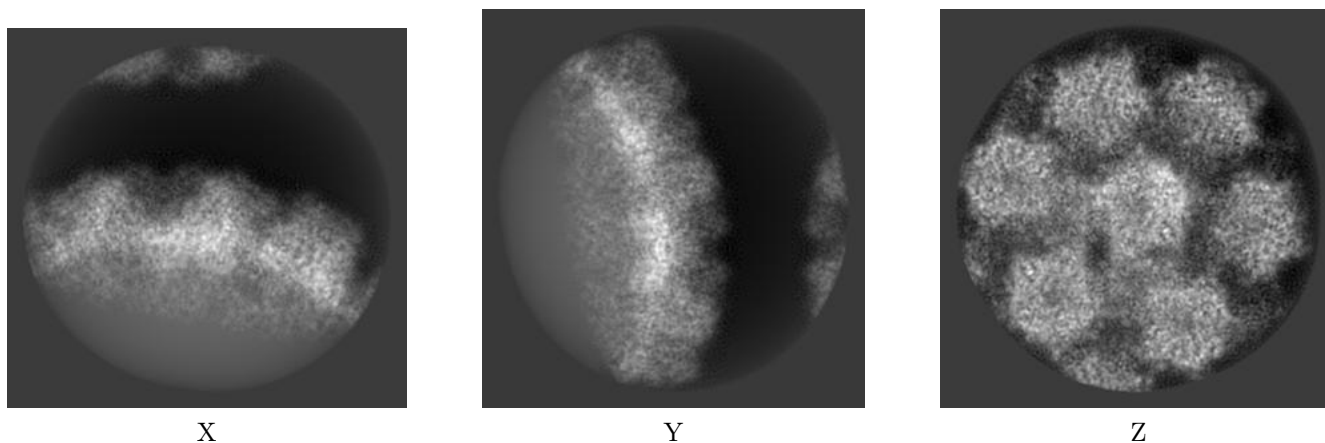
## 2 Map visualisation [i](#)

This section contains visualisations of the EMDB entry EMD-5155. These allow visual inspection of the internal detail of the map and identification of artifacts.

No raw map or half-maps were deposited for this entry and therefore no images, graphs, etc. pertaining to the raw map can be shown.

### 2.1 Orthogonal projections [i](#)

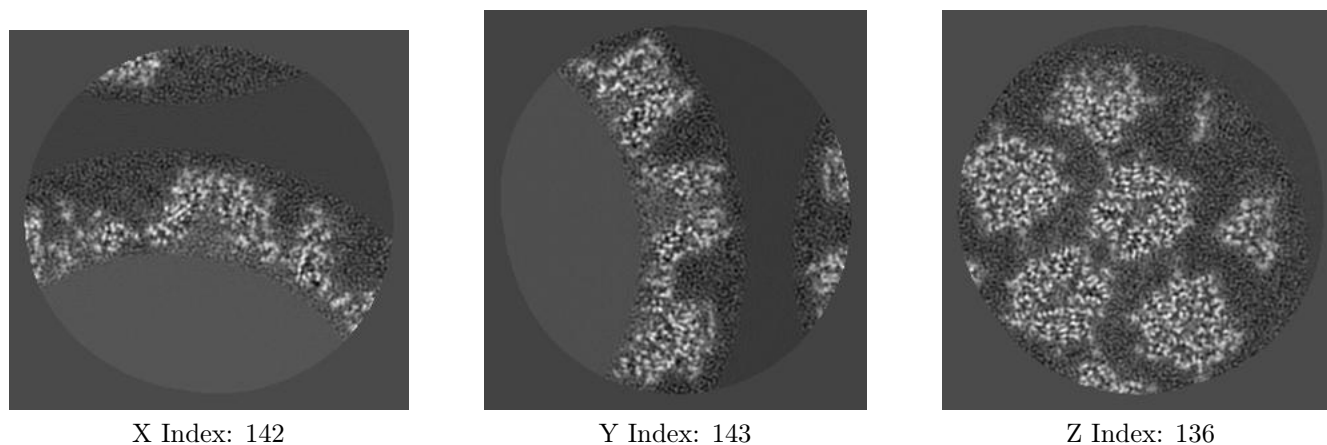
#### 2.1.1 Primary map



The images above show the map projected in three orthogonal directions.

### 2.2 Central slices [i](#)

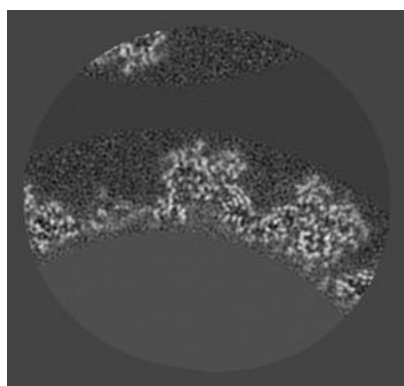
#### 2.2.1 Primary map



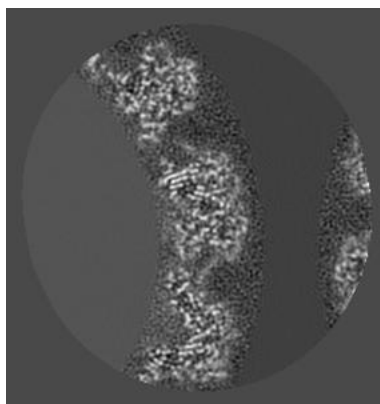
The images above show central slices of the map in three orthogonal directions.

## 2.3 Largest variance slices [i](#)

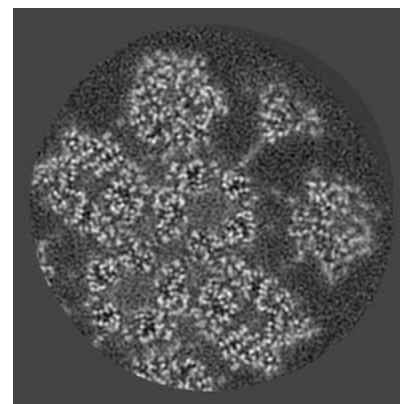
### 2.3.1 Primary map



X Index: 130



Y Index: 156



Z Index: 125

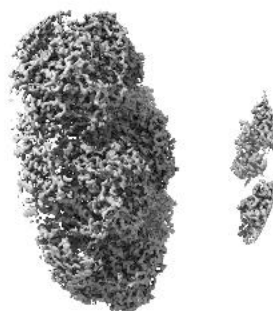
The images above show the largest variance slices of the map in three orthogonal directions.

## 2.4 Orthogonal surface views [i](#)

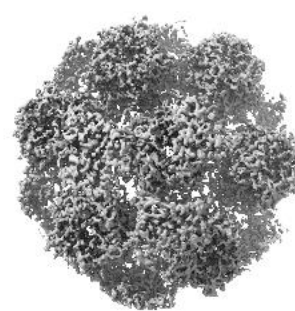
### 2.4.1 Primary map



X



Y



Z

The images above show the 3D surface view of the map at the recommended contour level 2.6. These images, in conjunction with the slice images, may facilitate assessment of whether an appropriate contour level has been provided.

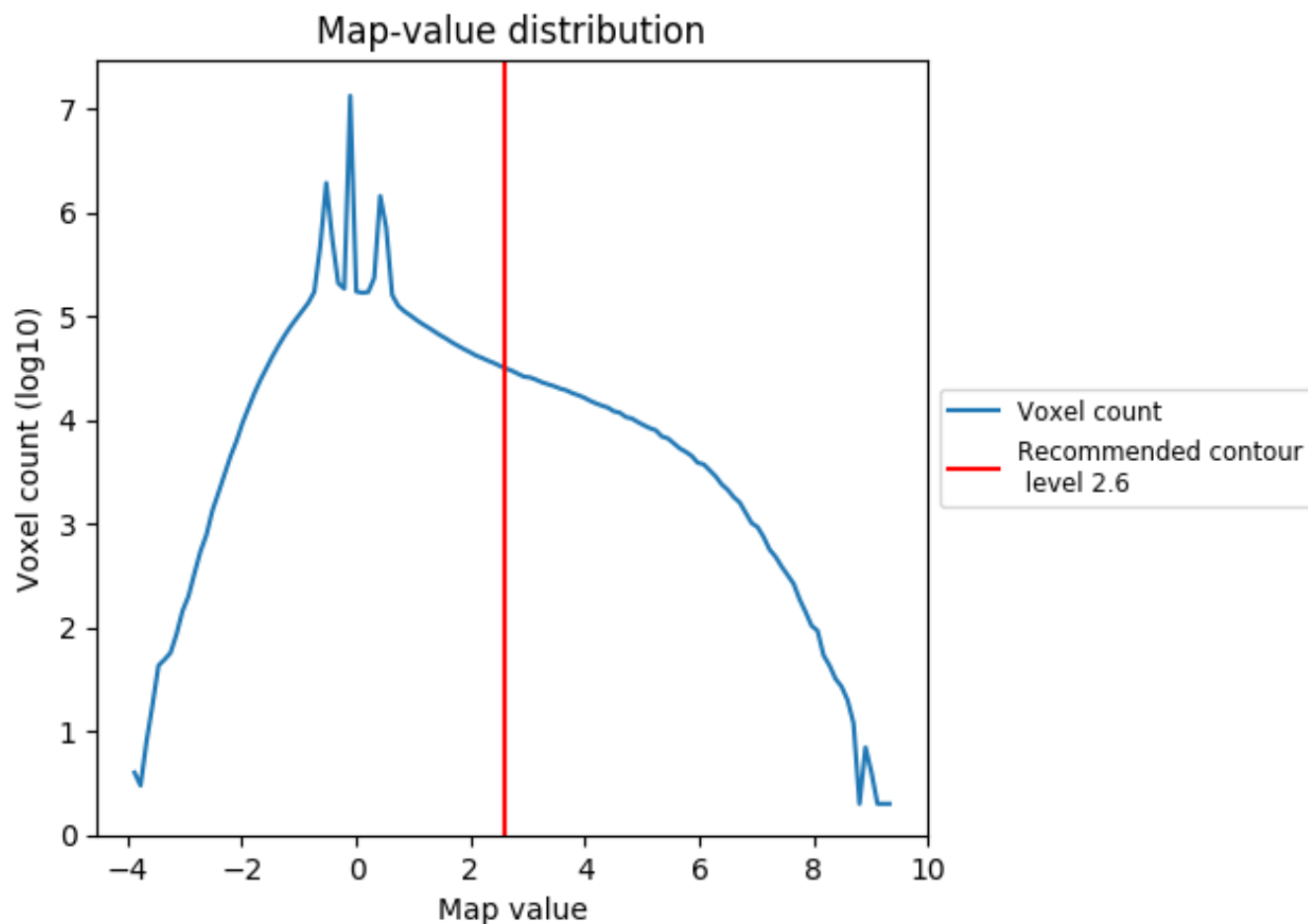
## 2.5 Mask visualisation

This section was not generated. No masks/segmentation were deposited.

### 3 Map analysis [i](#)

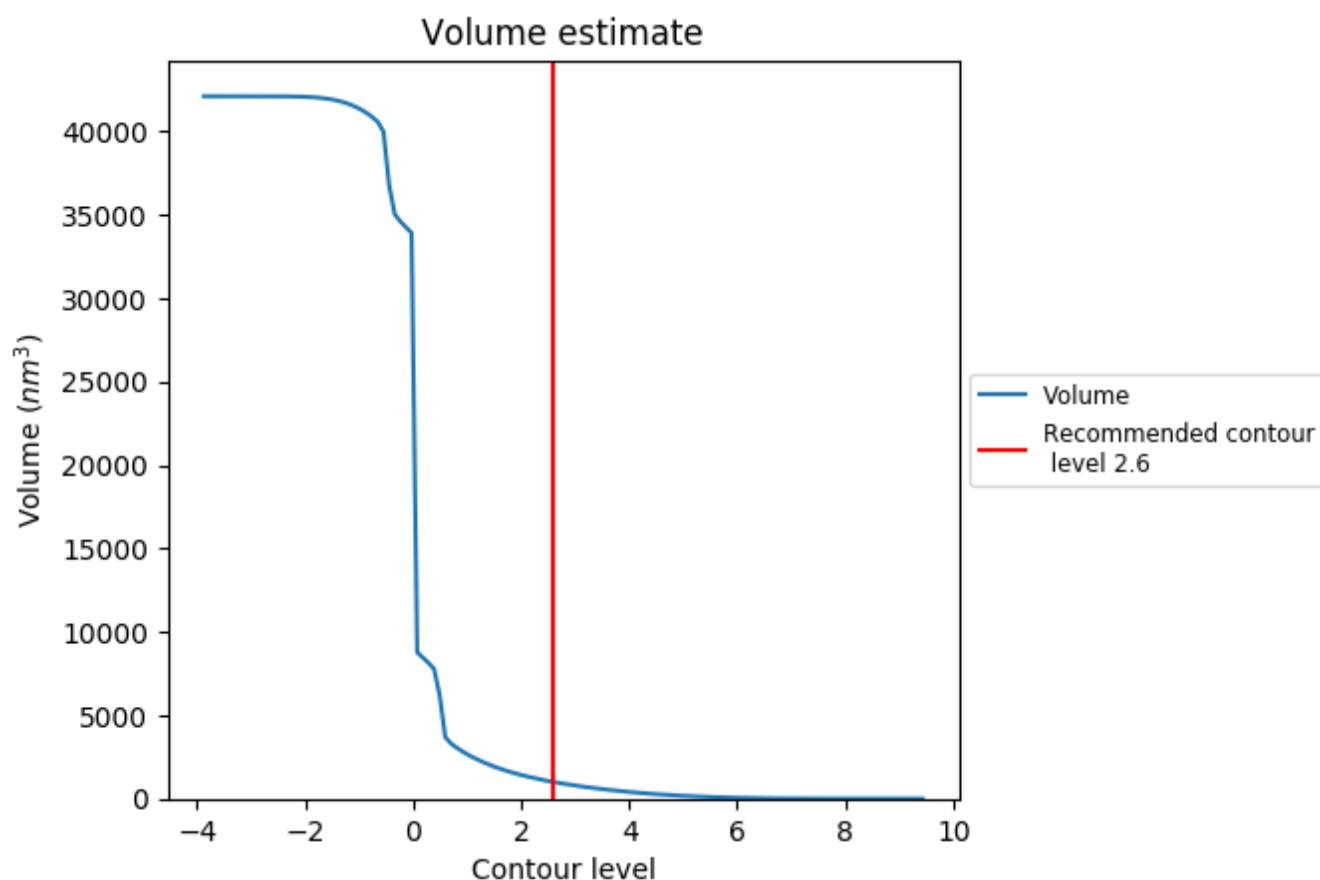
This section contains the results of statistical analysis of the map.

#### 3.1 Map-value distribution [i](#)



The map-value distribution is plotted in 128 intervals along the x-axis. The y-axis is logarithmic. A spike in this graph at zero usually indicates that the volume has been masked.

### 3.2 Volume estimate [i](#)



The volume at the recommended contour level is 1000 nm<sup>3</sup>; this corresponds to an approximate mass of 903 kDa.

The volume estimate graph shows how the enclosed volume varies with the contour level. The recommended contour level is shown as a vertical line and the intersection between the line and the curve gives the volume of the enclosed surface at the given level.

### 3.3 Rotationally averaged power spectrum [i](#)

This section was not generated. The rotationally averaged power spectrum could not be displayed.

## 4 Fourier-Shell correlation

This section was not generated. No FSC curve or half-maps provided.