



Full wwPDB EM Validation Report ⓘ

Jan 25, 2021 – 12:03 PM EST

EMDB ID : EMD-8599
Title : Samba Virus tomogram
Authors : Schrad, J.R.; Young, E.J.; Abrahao, J.S.; Cortines, J.R.; Parent, K.N.
Deposited on : 2017-02-10
Resolution : Not provided

This is a Full wwPDB EM Validation Report for a publicly released PDB entry.

We welcome your comments at validation@mail.wwpdb.org

A user guide is available at

<https://www.wwpdb.org/validation/2017/EMTomogramValidationReportHelp>
with specific help available everywhere you see the ⓘ symbol.

The following versions of software and data (see [references ⓘ](#)) were used in the production of this report:

EMDB validation analysis : 0.0.0.dev61
Validation Pipeline (wwPDB-VP) : 2.16

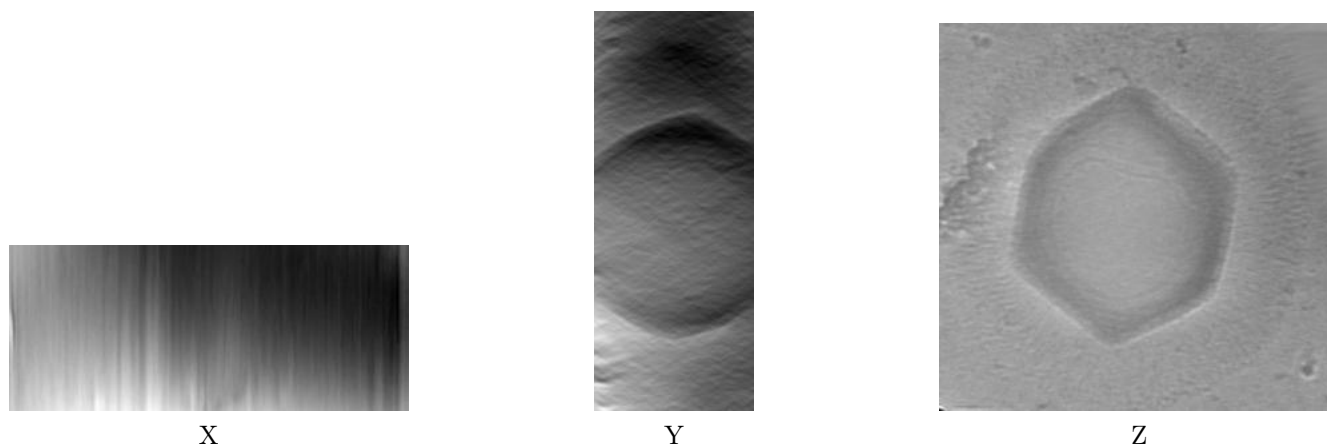
1 Experimental information

| Property | Value | Source |
|--------------------------------------|---------------------------------|-----------|
| EM reconstruction method | TOMOGRAPHY | Depositor |
| Imposed symmetry | Not Provided | |
| Number of tilted images used | 67 | Depositor |
| Resolution determination method | Not provided | |
| CTF correction method | Not provided | |
| Microscope | JEOL 2200FS | Depositor |
| Voltage (kV) | 200 | Depositor |
| Electron dose ($e^-/\text{\AA}^2$) | 1.1 | Depositor |
| Minimum defocus (nm) | Not provided | |
| Maximum defocus (nm) | 25.0 | Depositor |
| Magnification | 4000.0 | Depositor |
| Image detector | DIRECT ELECTRON DE-20 (5k x 3k) | Depositor |
| Maximum voxel value | 527176.700 | Depositor |
| Minimum voxel value | -587884.100 | Depositor |
| Average voxel value | -11709.452 | Depositor |
| Voxel value standard deviation | 16132.140 | Depositor |
| Recommended contour level | Not applicable | |
| Tomogram size (\AA) | 8452.5, 8187.9, 3366.3 | wwPDB |
| Tomogram dimensions | 575, 557, 229 | wwPDB |
| Tomogram angles ($^\circ$) | 90.0, 90.0, 90.0 | wwPDB |
| Grid spacing (\AA) | 14.7, 14.7, 14.7 | Depositor |

2 Tomogram visualisation [i](#)

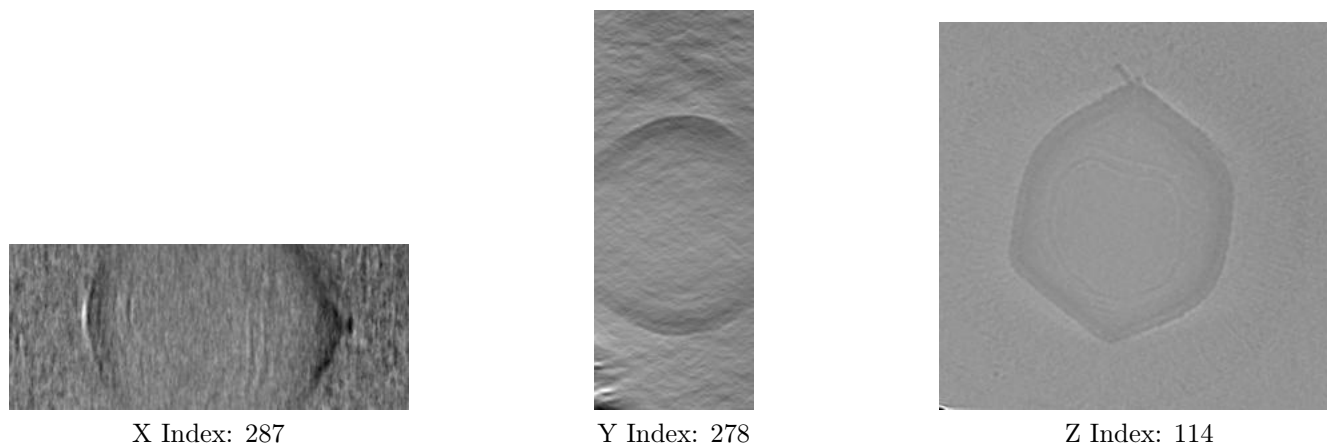
This section contains visualisations of the EMDB entry EMD-8599. These allow visual inspection of the internal detail of the tomogram and identification of artifacts.

2.1 Orthogonal projections [i](#)



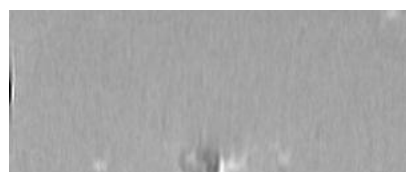
The images above show the tomogram projected in three orthogonal directions.

2.2 Central slices [i](#)



The images above show central slices of the tomogram in three orthogonal directions.

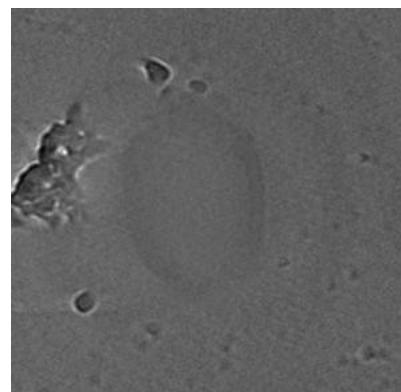
2.3 Largest variance slices [i](#)



X Index: 0



Y Index: 0



Z Index: 1

The images above show the largest variance slices of the tomogram in three orthogonal directions.

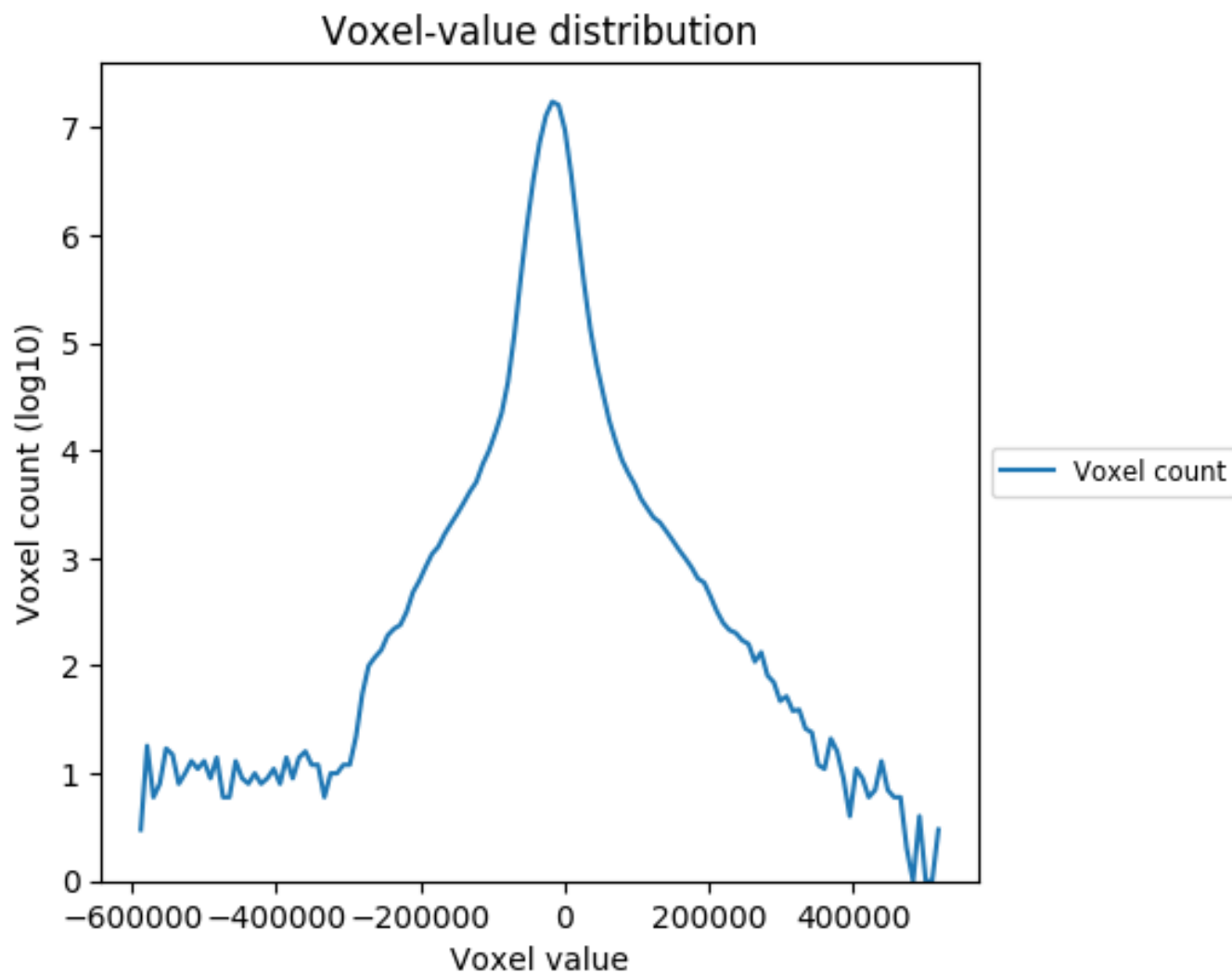
2.4 Mask visualisation [i](#)

This section was not generated. No masks/segmentation were deposited.

3 Tomogram analysis [i](#)

This section contains the results of statistical analysis of the tomogram.

3.1 Voxel-value distribution [i](#)



The voxel-value distribution is plotted in 128 intervals along the x-axis. The y-axis is logarithmic.