



# wwPDB X-ray Structure Validation Summary Report ⓘ

May 16, 2020 – 12:09 am BST

PDB ID : 2P6E  
Title : Crystal structures of *Saccharomyces cerevisiae* N-myristoyltransferase with bound myristoyl-CoA  
Authors : Wu, J.; Ding, J.  
Deposited on : 2007-03-18  
Resolution : 2.90 Å(reported)

This is a wwPDB X-ray Structure Validation Summary Report for a publicly released PDB entry.

We welcome your comments at [validation@mail.wwpdb.org](mailto:validation@mail.wwpdb.org)

A user guide is available at

<https://www.wwpdb.org/validation/2017/XrayValidationReportHelp>

with specific help available everywhere you see the ⓘ symbol.

---

The following versions of software and data (see [references ⓘ](#)) were used in the production of this report:

MolProbity : 4.02b-467  
Mogul : 1.8.5 (274361), CSD as541be (2020)  
Xtriage (Phenix) : 1.13  
EDS : 2.11  
buster-report : 1.1.7 (2018)  
Percentile statistics : 20191225.v01 (using entries in the PDB archive December 25th 2019)  
Refmac : 5.8.0158  
CCP4 : 7.0.044 (Gargrove)  
Ideal geometry (proteins) : Engh & Huber (2001)  
Ideal geometry (DNA, RNA) : Parkinson et al. (1996)  
Validation Pipeline (wwPDB-VP) : 2.11

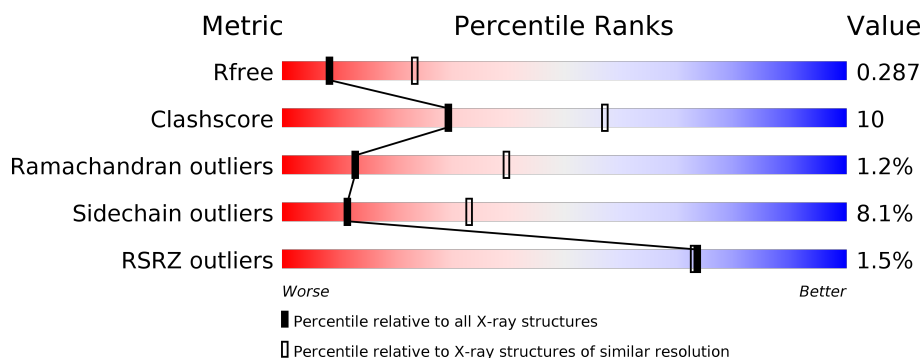
# 1 Overall quality at a glance

The following experimental techniques were used to determine the structure:

## *X-RAY DIFFRACTION*

The reported resolution of this entry is 2.90 Å.

Percentile scores (ranging between 0-100) for global validation metrics of the entry are shown in the following graphic. The table shows the number of entries on which the scores are based.



Metric	Whole archive (#Entries)	Similar resolution (#Entries, resolution range(Å))
$R_{free}$	130704	1957 (2.90-2.90)
Clashscore	141614	2172 (2.90-2.90)
Ramachandran outliers	138981	2115 (2.90-2.90)
Sidechain outliers	138945	2117 (2.90-2.90)
RSRZ outliers	127900	1906 (2.90-2.90)

The table below summarises the geometric issues observed across the polymeric chains and their fit to the electron density. The red, orange, yellow and green segments on the lower bar indicate the fraction of residues that contain outliers for  $\geq 3$ , 2, 1 and 0 types of geometric quality criteria respectively. A grey segment represents the fraction of residues that are not modelled. The numeric value for each fraction is indicated below the corresponding segment, with a dot representing fractions  $\leq 5\%$ . The upper red bar (where present) indicates the fraction of residues that have poor fit to the electron density. The numeric value is given above the bar.

Mol	Chain	Length	Quality of chain
1	A	455	<div> <div>2%</div> <div> <div></div> <div>73%</div> <div>21%</div> <div>• •</div> </div> </div>
1	B	455	<div> <div>%</div> <div> <div></div> <div>70%</div> <div>23%</div> <div>• •</div> </div> </div>
1	C	455	<div> <div>2%</div> <div> <div></div> <div>73%</div> <div>22%</div> <div>• •</div> </div> </div>
1	D	455	<div> <div>%</div> <div> <div></div> <div>75%</div> <div>20%</div> <div>• •</div> </div> </div>
1	E	455	<div> <div>%</div> <div> <div></div> <div>69%</div> <div>27%</div> <div>• •</div> </div> </div>
1	F	455	<div> <div>%</div> <div> <div></div> <div>72%</div> <div>22%</div> <div>• •</div> </div> </div>

The following table lists non-polymeric compounds, carbohydrate monomers and non-standard residues in protein, DNA, RNA chains that are outliers for geometric or electron-density-fit criteria:

Mol	Type	Chain	Res	Chirality	Geometry	Clashes	Electron density
2	MYA	A	601	X	-	-	-
2	MYA	B	602	X	-	-	-
2	MYA	C	603	X	-	-	-
2	MYA	D	604	X	-	-	-
2	MYA	E	605	X	-	-	-
2	MYA	F	606	X	-	-	-

## 2 Entry composition [i](#)

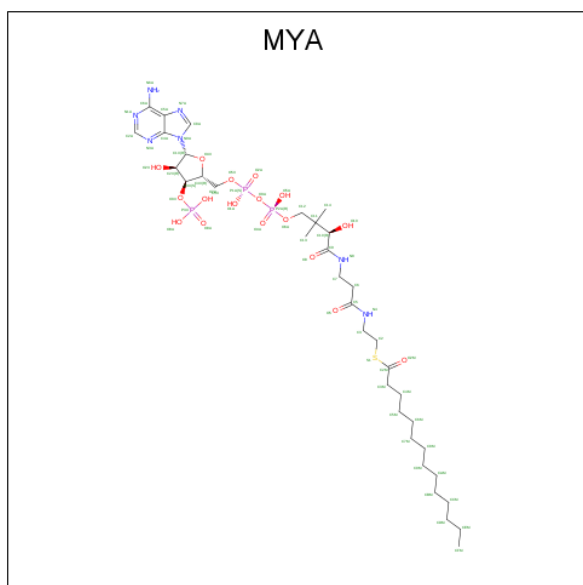
There are 2 unique types of molecules in this entry. The entry contains 22163 atoms, of which 0 are hydrogens and 0 are deuteriums.

In the tables below, the ZeroOcc column contains the number of atoms modelled with zero occupancy, the AltConf column contains the number of residues with at least one atom in alternate conformation and the Trace column contains the number of residues modelled with at most 2 atoms.

- Molecule 1 is a protein called Glycylpeptide N-tetradecanoyltransferase.

Mol	Chain	Residues	Atoms					ZeroOcc	AltConf	Trace
1	A	442	Total	C	N	O	S	0	0	0
			3627	2348	603	667	9			
1	B	443	Total	C	N	O	S	0	0	0
			3634	2352	604	669	9			
1	C	446	Total	C	N	O	S	0	0	0
			3661	2367	608	677	9			
1	D	443	Total	C	N	O	S	0	0	0
			3636	2354	605	668	9			
1	E	443	Total	C	N	O	S	0	0	0
			3634	2352	604	669	9			
1	F	438	Total	C	N	O	S	0	0	0
			3593	2326	598	660	9			

- Molecule 2 is TETRADECANOYL-COA (three-letter code: MYA) (formula:  $C_{35}H_{62}N_7O_{17}P_3S$ ).

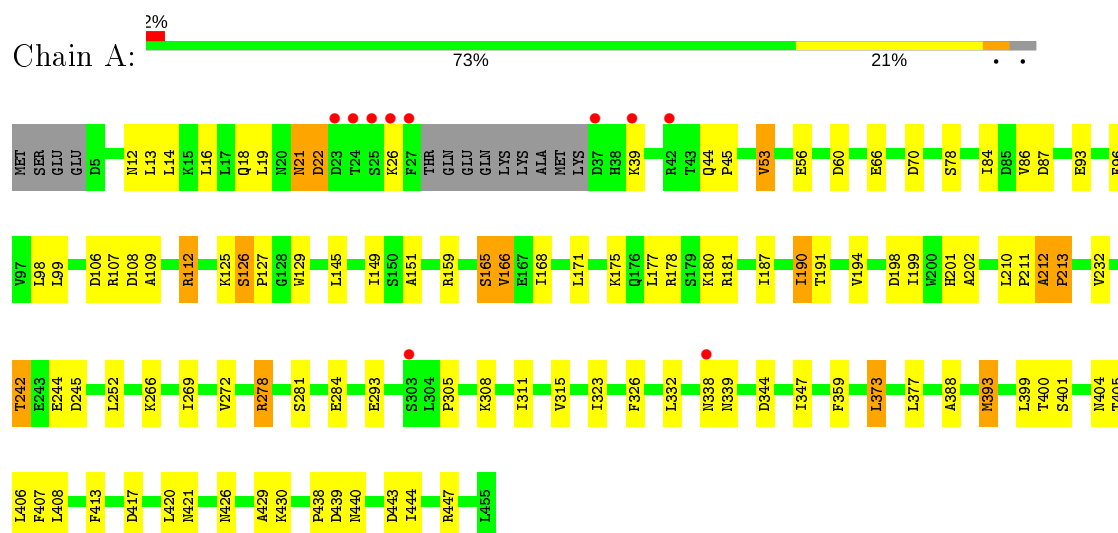


Mol	Chain	Residues	Atoms						ZeroOcc	AltConf
2	A	1	Total	C	N	O	P	S	0	0
			63	35	7	17	3	1		
2	B	1	Total	C	N	O	P	S	0	0
			63	35	7	17	3	1		
2	C	1	Total	C	N	O	P	S	0	0
			63	35	7	17	3	1		
2	D	1	Total	C	N	O	P	S	0	0
			63	35	7	17	3	1		
2	E	1	Total	C	N	O	P	S	0	0
			63	35	7	17	3	1		
2	F	1	Total	C	N	O	P	S	0	0
			63	35	7	17	3	1		

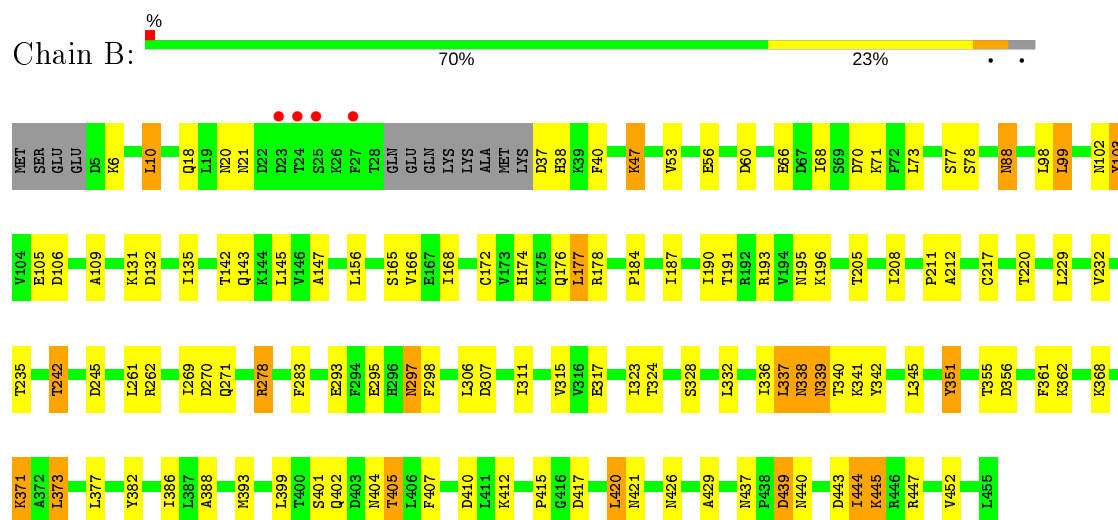
### 3 Residue-property plots [i](#)

These plots are drawn for all protein, RNA and DNA chains in the entry. The first graphic for a chain summarises the proportions of the various outlier classes displayed in the second graphic. The second graphic shows the sequence view annotated by issues in geometry and electron density. Residues are color-coded according to the number of geometric quality criteria for which they contain at least one outlier: green = 0, yellow = 1, orange = 2 and red = 3 or more. A red dot above a residue indicates a poor fit to the electron density ( $RSRZ > 2$ ). Stretches of 2 or more consecutive residues without any outlier are shown as a green connector. Residues present in the sample, but not in the model, are shown in grey.

#### • Molecule 1: Glycylpeptide N-tetradecanoyltransferase

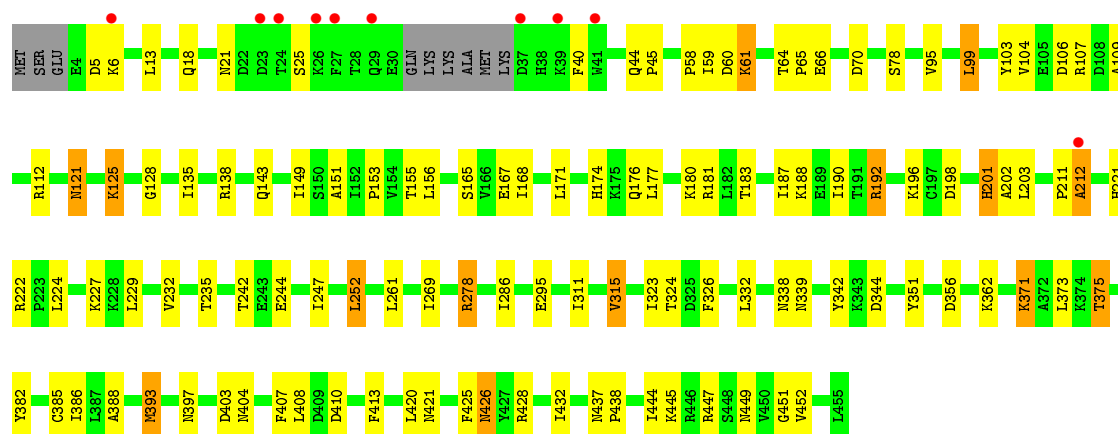


#### • Molecule 1: Glycylpeptide N-tetradecanoyltransferase

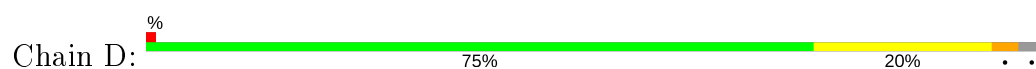


#### • Molecule 1: Glycylpeptide N-tetradecanoyltransferase





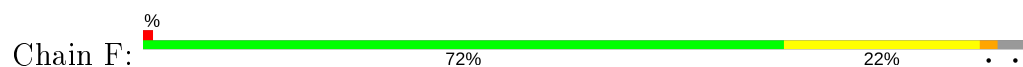
• Molecule 1: Glycylpeptide N-tetradecanoyltransferase

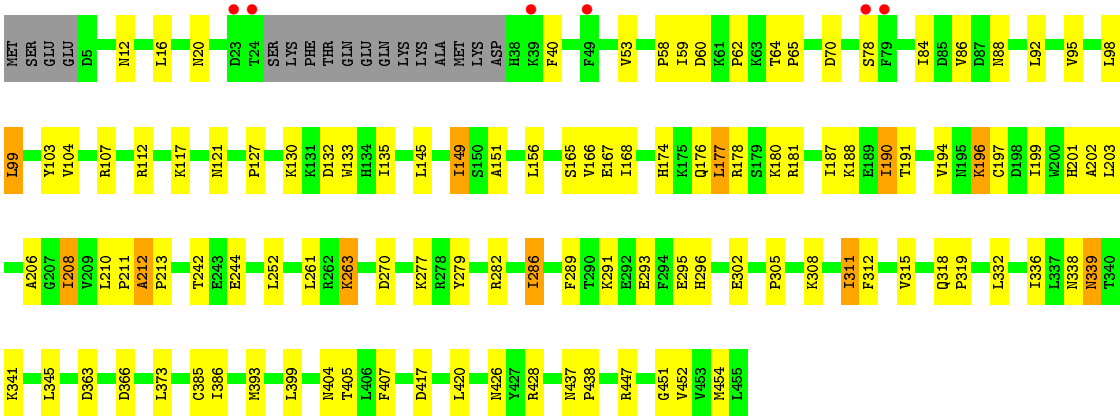


• Molecule 1: Glycylpeptide N-tetradecanoyltransferase



• Molecule 1: Glycylpeptide N-tetradecanoyltransferase







## 4 Data and refinement statistics

Property	Value	Source
Space group	C 1 2 1	Depositor
Cell constants a, b, c, $\alpha$ , $\beta$ , $\gamma$	188.22Å 150.87Å 134.05Å 90.00° 107.65° 90.00°	Depositor
Resolution (Å)	20.00 – 2.90 49.38 – 2.60	Depositor EDS
% Data completeness (in resolution range)	98.9 (20.00-2.90) 98.4 (49.38-2.60)	Depositor EDS
$R_{merge}$	0.10	Depositor
$R_{sym}$	0.10	Depositor
$\langle I/\sigma(I) \rangle$ <sup>1</sup>	1.70 (at 2.61Å)	Xtrriage
Refinement program	REFMAC 5.2.0005	Depositor
R, $R_{free}$	0.249 , 0.262 0.245 , 0.287	Depositor DCC
$R_{free}$ test set	5391 reflections (5.01%)	wwPDB-VP
Wilson B-factor (Å <sup>2</sup> )	50.1	Xtrriage
Anisotropy	0.494	Xtrriage
Bulk solvent $k_{sol}$ (e/Å <sup>3</sup> ), $B_{sol}$ (Å <sup>2</sup> )	0.33 , 28.2	EDS
L-test for twinning <sup>2</sup>	$\langle  L  \rangle = 0.54$ , $\langle L^2 \rangle = 0.37$	Xtrriage
Estimated twinning fraction	No twinning to report.	Xtrriage
$F_o, F_c$ correlation	0.93	EDS
Total number of atoms	22163	wwPDB-VP
Average B, all atoms (Å <sup>2</sup> )	51.0	wwPDB-VP

Xtrriage's analysis on translational NCS is as follows: *The analyses of the Patterson function reveals a significant off-origin peak that is 51.56 % of the origin peak, indicating pseudo-translational symmetry. The chance of finding a peak of this or larger height randomly in a structure without pseudo-translational symmetry is equal to 5.5100e-05. The detected translational NCS is most likely also responsible for the elevated intensity ratio.*

<sup>1</sup>Intensities estimated from amplitudes.

<sup>2</sup>Theoretical values of  $\langle |L| \rangle$ ,  $\langle L^2 \rangle$  for acentric reflections are 0.5, 0.333 respectively for untwinned datasets, and 0.375, 0.2 for perfectly twinned datasets.

## 5 Model quality [i](#)

### 5.1 Standard geometry [i](#)

Bond lengths and bond angles in the following residue types are not validated in this section: MYA

The Z score for a bond length (or angle) is the number of standard deviations the observed value is removed from the expected value. A bond length (or angle) with  $|Z| > 5$  is considered an outlier worth inspection. RMSZ is the root-mean-square of all Z scores of the bond lengths (or angles).

Mol	Chain	Bond lengths		Bond angles	
		RMSZ	# Z  >5	RMSZ	# Z  >5
1	A	0.36	0/3716	0.53	0/5024
1	B	0.37	0/3723	0.54	0/5034
1	C	0.37	0/3750	0.54	0/5070
1	D	0.37	0/3725	0.55	0/5035
1	E	0.37	0/3723	0.54	0/5034
1	F	0.36	0/3681	0.53	0/4978
All	All	0.37	0/22318	0.54	0/30175

There are no bond length outliers.

There are no bond angle outliers.

There are no chirality outliers.

There are no planarity outliers.

### 5.2 Too-close contacts [i](#)

In the following table, the Non-H and H(model) columns list the number of non-hydrogen atoms and hydrogen atoms in the chain respectively. The H(added) column lists the number of hydrogen atoms added and optimized by MolProbity. The Clashes column lists the number of clashes within the asymmetric unit, whereas Symm-Clashes lists symmetry related clashes.

Mol	Chain	Non-H	H(model)	H(added)	Clashes	Symm-Clashes
1	A	3627	0	3615	78	0
1	B	3634	0	3622	69	0
1	C	3661	0	3642	70	0
1	D	3636	0	3628	60	0
1	E	3634	0	3622	78	0
1	F	3593	0	3584	61	0
2	A	63	0	58	7	0

*Continued on next page...*

*Continued from previous page...*

Mol	Chain	Non-H	H(model)	H(added)	Clashes	Symm-Clashes
2	B	63	0	58	5	0
2	C	63	0	58	6	0
2	D	63	0	58	2	0
2	E	63	0	58	8	0
2	F	63	0	58	5	0
All	All	22163	0	22061	420	0

The all-atom clashscore is defined as the number of clashes found per 1000 atoms (including hydrogen atoms). The all-atom clashscore for this structure is 10.

The worst 5 of 420 close contacts within the same asymmetric unit are listed below, sorted by their clash magnitude.

Atom-1	Atom-2	Interatomic distance (Å)	Clash overlap (Å)
1:C:278:ARG:HG3	1:C:278:ARG:HH11	1.07	1.15
1:B:278:ARG:HH11	1:B:278:ARG:HG3	1.00	1.10
1:A:212:ALA:H	1:A:213:PRO:HD3	1.10	1.07
1:A:151:ALA:HB2	1:A:190:ILE:HD11	1.35	1.05
1:B:47:LYS:HD2	1:B:212:ALA:HB1	1.43	1.01

There are no symmetry-related clashes.

## 5.3 Torsion angles [i](#)

### 5.3.1 Protein backbone [i](#)

In the following table, the Percentiles column shows the percent Ramachandran outliers of the chain as a percentile score with respect to all X-ray entries followed by that with respect to entries of similar resolution.

The Analysed column shows the number of residues for which the backbone conformation was analysed, and the total number of residues.

Mol	Chain	Analysed	Favoured	Allowed	Outliers	Percentiles	
1	A	438/455 (96%)	400 (91%)	31 (7%)	7 (2%)	9	32
1	B	439/455 (96%)	410 (93%)	24 (6%)	5 (1%)	14	42
1	C	442/455 (97%)	390 (88%)	47 (11%)	5 (1%)	14	42
1	D	439/455 (96%)	399 (91%)	33 (8%)	7 (2%)	9	32
1	E	439/455 (96%)	407 (93%)	29 (7%)	3 (1%)	22	54

*Continued on next page...*

*Continued from previous page...*

Mol	Chain	Analysed	Favoured	Allowed	Outliers	Percentiles	
1	F	434/455 (95%)	387 (89%)	42 (10%)	5 (1%)	13	40
All	All	2631/2730 (96%)	2393 (91%)	206 (8%)	32 (1%)	13	40

5 of 32 Ramachandran outliers are listed below:

Mol	Chain	Res	Type
1	A	212	ALA
1	C	212	ALA
1	D	77	SER
1	D	212	ALA
1	F	212	ALA

### 5.3.2 Protein sidechains ⓘ

In the following table, the Percentiles column shows the percent sidechain outliers of the chain as a percentile score with respect to all X-ray entries followed by that with respect to entries of similar resolution.

The Analysed column shows the number of residues for which the sidechain conformation was analysed, and the total number of residues.

Mol	Chain	Analysed	Rotameric	Outliers	Percentiles	
1	A	400/413 (97%)	369 (92%)	31 (8%)	12	34
1	B	401/413 (97%)	359 (90%)	42 (10%)	7	21
1	C	404/413 (98%)	370 (92%)	34 (8%)	11	31
1	D	401/413 (97%)	371 (92%)	30 (8%)	13	37
1	E	401/413 (97%)	368 (92%)	33 (8%)	11	32
1	F	396/413 (96%)	371 (94%)	25 (6%)	18	46
All	All	2403/2478 (97%)	2208 (92%)	195 (8%)	11	33

5 of 195 residues with a non-rotameric sidechain are listed below:

Mol	Chain	Res	Type
1	C	278	ARG
1	D	53	VAL
1	F	286	ILE
1	C	315	VAL
1	C	375	THR

Some sidechains can be flipped to improve hydrogen bonding and reduce clashes. 5 of 64 such sidechains are listed below:

Mol	Chain	Res	Type
1	C	421	ASN
1	D	392	ASN
1	F	397	ASN
1	C	426	ASN
1	D	174	HIS

### 5.3.3 RNA [i](#)

There are no RNA molecules in this entry.

### 5.4 Non-standard residues in protein, DNA, RNA chains [i](#)

There are no non-standard protein/DNA/RNA residues in this entry.

### 5.5 Carbohydrates [i](#)

There are no carbohydrates in this entry.

### 5.6 Ligand geometry [i](#)

6 ligands are modelled in this entry.

In the following table, the Counts columns list the number of bonds (or angles) for which Mogul statistics could be retrieved, the number of bonds (or angles) that are observed in the model and the number of bonds (or angles) that are defined in the Chemical Component Dictionary. The Link column lists molecule types, if any, to which the group is linked. The Z score for a bond length (or angle) is the number of standard deviations the observed value is removed from the expected value. A bond length (or angle) with  $|Z| > 2$  is considered an outlier worth inspection. RMSZ is the root-mean-square of all Z scores of the bond lengths (or angles).

Mol	Type	Chain	Res	Link	Bond lengths			Bond angles		
					Counts	RMSZ	$\# Z  > 2$	Counts	RMSZ	$\# Z  > 2$
2	MYA	E	605	-	54,65,65	1.16	5 (9%)	67,91,91	1.47	8 (11%)
2	MYA	C	603	-	54,65,65	1.24	4 (7%)	67,91,91	1.31	4 (5%)
2	MYA	D	604	-	54,65,65	1.26	5 (9%)	67,91,91	1.35	3 (4%)
2	MYA	B	602	-	54,65,65	1.22	5 (9%)	67,91,91	1.45	6 (8%)
2	MYA	A	601	-	54,65,65	1.22	5 (9%)	67,91,91	1.30	4 (5%)
2	MYA	F	606	-	54,65,65	1.24	5 (9%)	67,91,91	1.29	4 (5%)

In the following table, the Chirals column lists the number of chiral outliers, the number of chiral centers analysed, the number of these observed in the model and the number defined in the Chemical Component Dictionary. Similar counts are reported in the Torsion and Rings columns. '-' means no outliers of that kind were identified.

Mol	Type	Chain	Res	Link	Chirals	Torsions	Rings
2	MYA	E	605	-	1/1/12/14	17/59/80/80	0/3/3/3
2	MYA	C	603	-	1/1/12/14	15/59/80/80	0/3/3/3
2	MYA	D	604	-	1/1/12/14	21/59/80/80	0/3/3/3
2	MYA	B	602	-	1/1/12/14	26/59/80/80	0/3/3/3
2	MYA	A	601	-	1/1/12/14	19/59/80/80	0/3/3/3
2	MYA	F	606	-	1/1/12/14	21/59/80/80	0/3/3/3

The worst 5 of 29 bond length outliers are listed below:

Mol	Chain	Res	Type	Atoms	Z	Observed(Å)	Ideal(Å)
2	F	606	MYA	P2A-O4A	3.94	1.64	1.50
2	C	603	MYA	P2A-O4A	3.79	1.64	1.50
2	B	602	MYA	P2A-O4A	3.66	1.63	1.50
2	B	602	MYA	P3X-O9A	3.64	1.62	1.50
2	D	604	MYA	P2A-O4A	3.64	1.63	1.50

The worst 5 of 29 bond angle outliers are listed below:

Mol	Chain	Res	Type	Atoms	Z	Observed(°)	Ideal(°)
2	E	605	MYA	O2M-C2M-C3M	7.02	121.52	109.02
2	C	603	MYA	O2M-C2M-C3M	6.44	120.49	109.02
2	F	606	MYA	O2M-C2M-C3M	6.32	120.28	109.02
2	B	602	MYA	O2M-C2M-C3M	6.28	120.21	109.02
2	A	601	MYA	O2M-C2M-C3M	6.27	120.19	109.02

5 of 6 chirality outliers are listed below:

Mol	Chain	Res	Type	Atom
2	E	605	MYA	C10
2	C	603	MYA	C10
2	D	604	MYA	C10
2	B	602	MYA	C10
2	A	601	MYA	C10

5 of 119 torsion outliers are listed below:

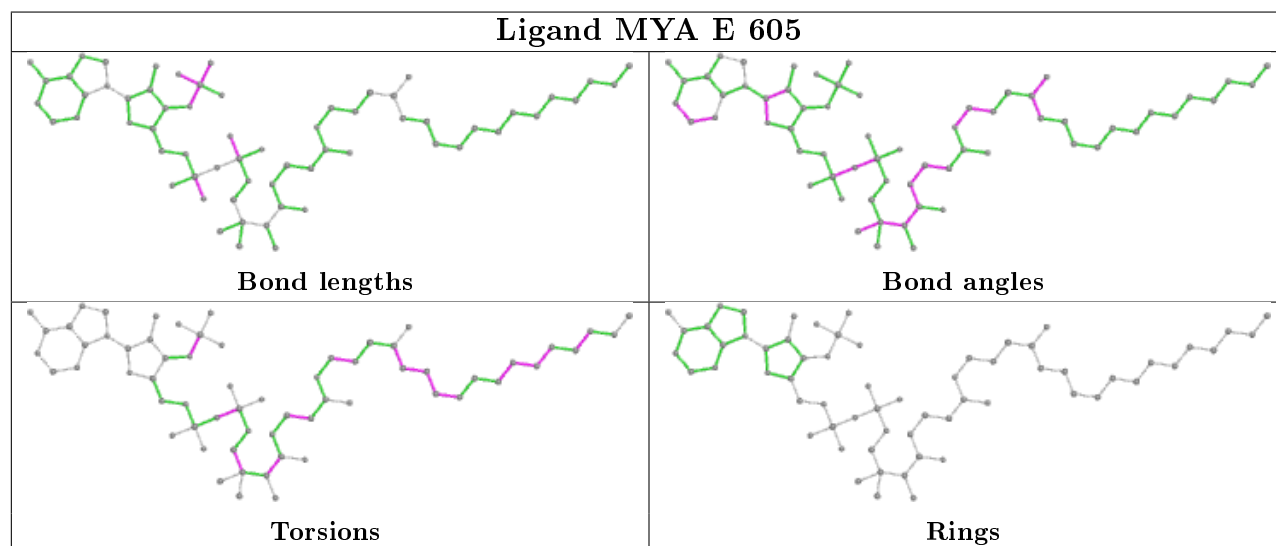
Mol	Chain	Res	Type	Atoms
2	E	605	MYA	C10-C11-C12-O6A
2	E	605	MYA	O2M-C2M-C3M-C4M
2	D	604	MYA	C5X-O5X-P1A-O2A
2	D	604	MYA	P1A-O3A-P2A-O6A
2	D	604	MYA	C12-O6A-P2A-O4A

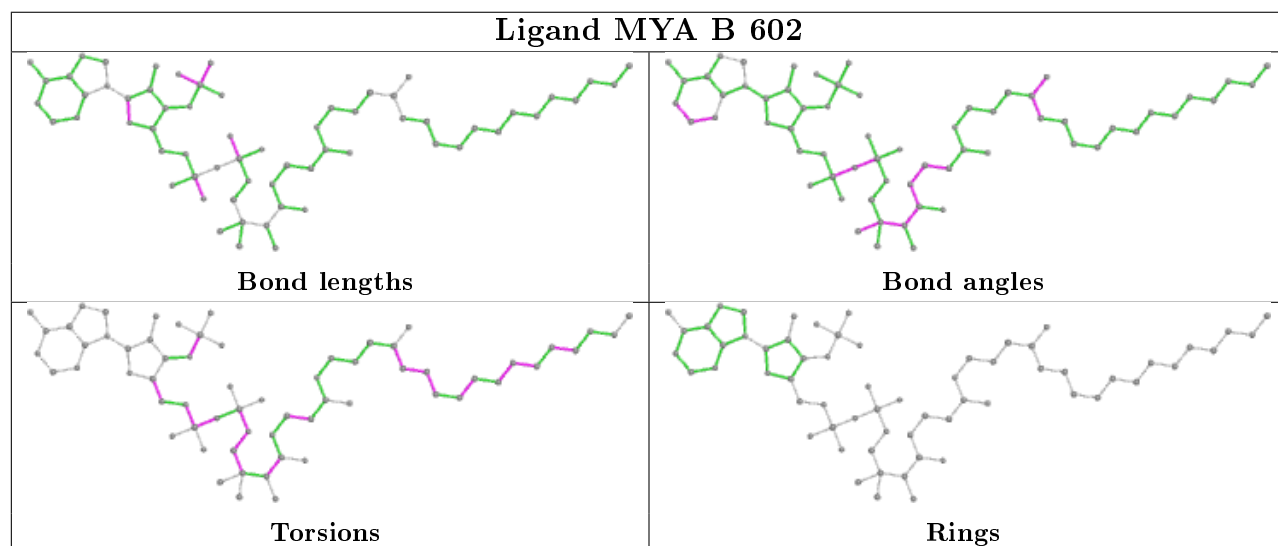
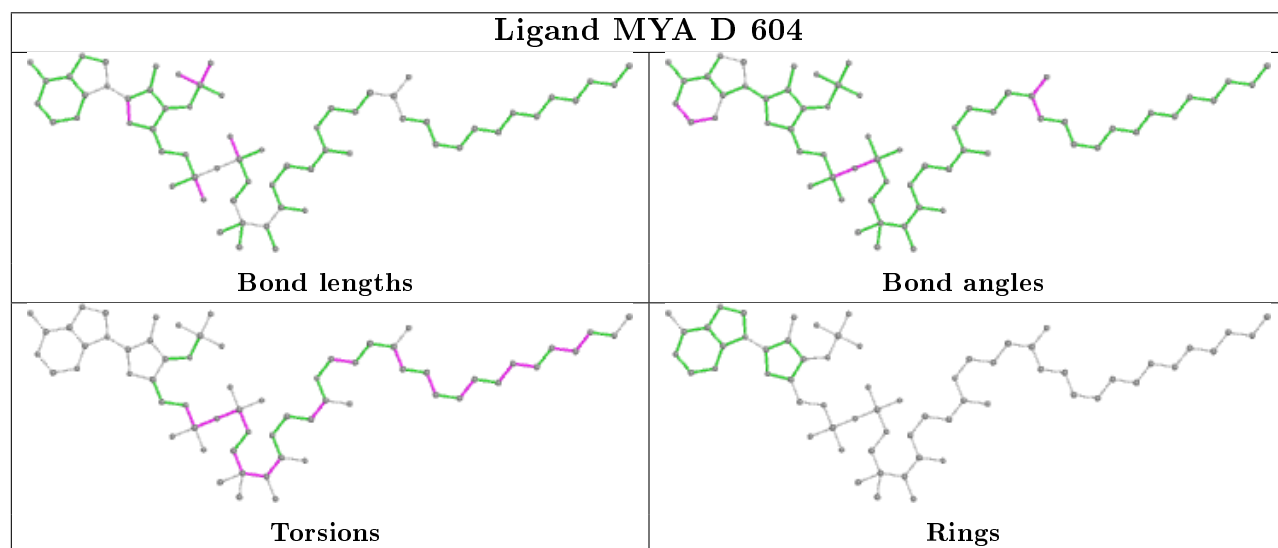
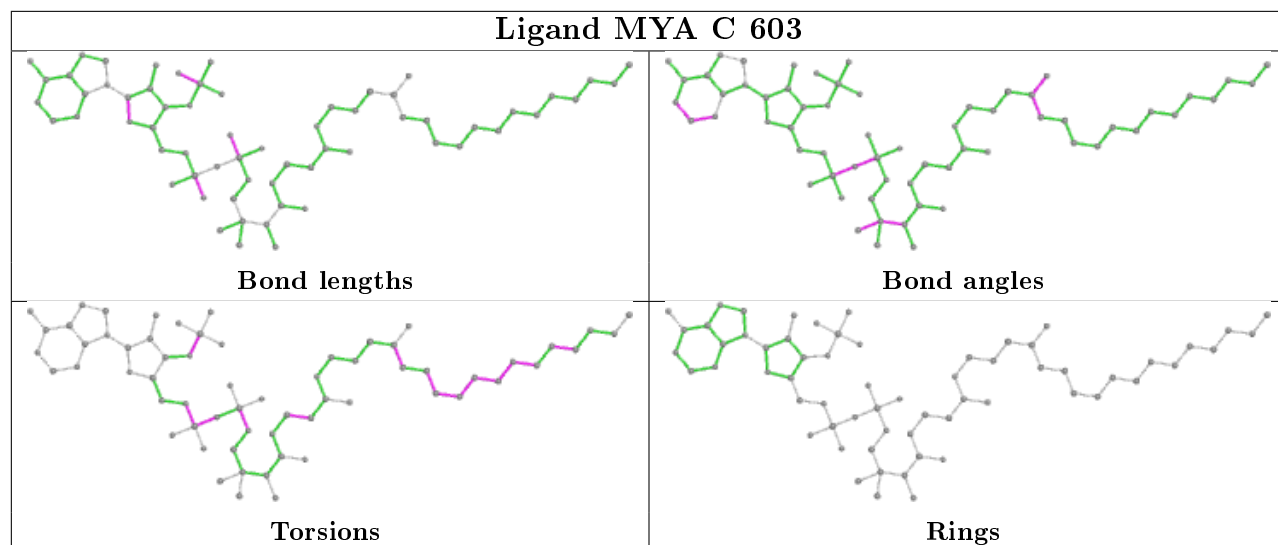
There are no ring outliers.

6 monomers are involved in 33 short contacts:

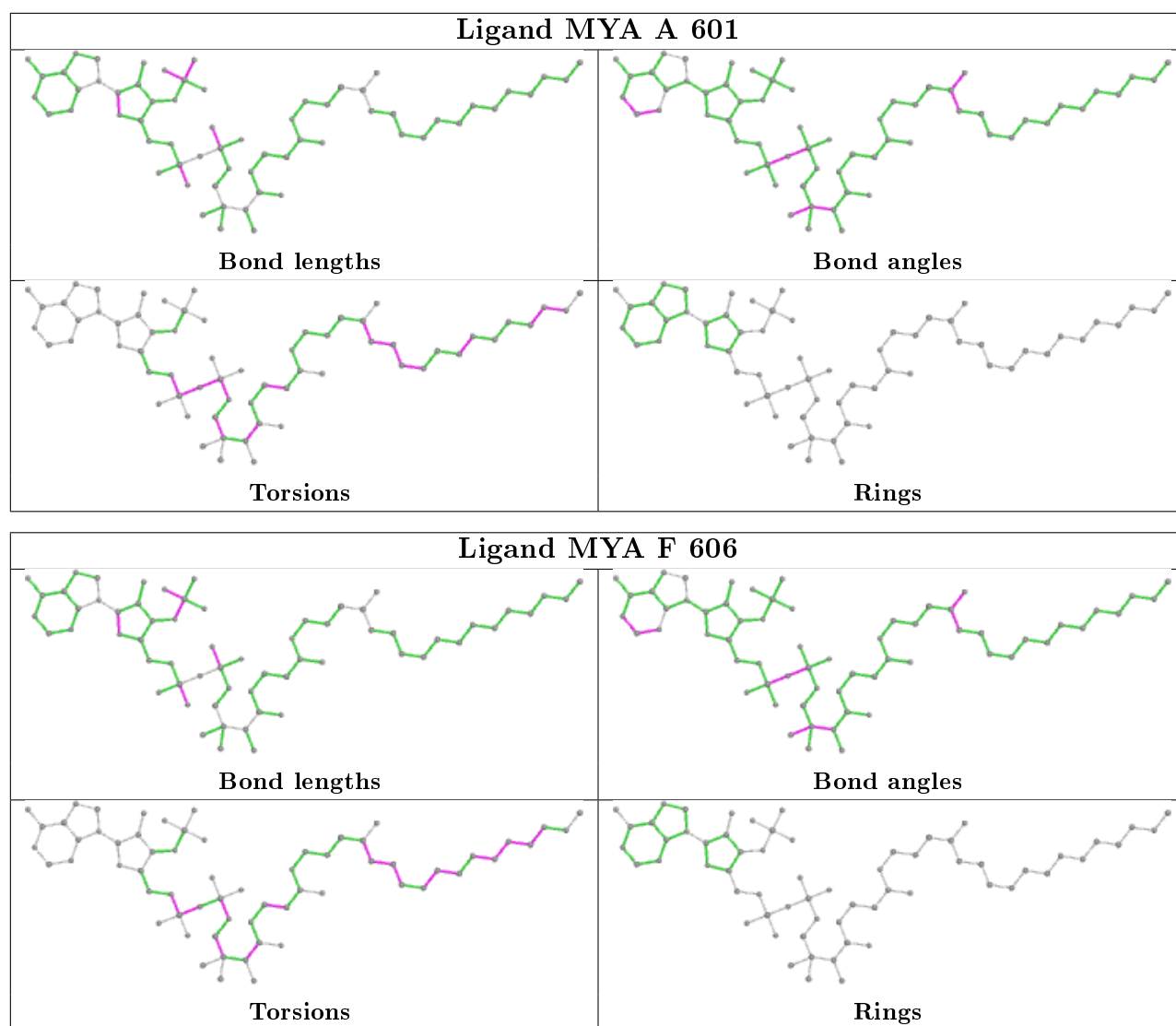
Mol	Chain	Res	Type	Clashes	Symm-Clashes
2	E	605	MYA	8	0
2	C	603	MYA	6	0
2	D	604	MYA	2	0
2	B	602	MYA	5	0
2	A	601	MYA	7	0
2	F	606	MYA	5	0

The following is a two-dimensional graphical depiction of Mogul quality analysis of bond lengths, bond angles, torsion angles, and ring geometry for all instances of the Ligand of Interest. In addition, ligands with molecular weight > 250 and outliers as shown on the validation Tables will also be included. For torsion angles, if less than 5% of the Mogul distribution of torsion angles is within 10 degrees of the torsion angle in question, then that torsion angle is considered an outlier. Any bond that is central to one or more torsion angles identified as an outlier by Mogul will be highlighted in the graph. For rings, the root-mean-square deviation (RMSD) between the ring in question and similar rings identified by Mogul is calculated over all ring torsion angles. If the average RMSD is greater than 60 degrees and the minimal RMSD between the ring in question and any Mogul-identified rings is also greater than 60 degrees, then that ring is considered an outlier. The outliers are highlighted in purple. The color gray indicates Mogul did not find sufficient equivalents in the CSD to analyse the geometry.









## 5.7 Other polymers [i](#)

There are no such residues in this entry.

## 5.8 Polymer linkage issues [i](#)

There are no chain breaks in this entry.

## 6 Fit of model and data ⓘ

### 6.1 Protein, DNA and RNA chains ⓘ

In the following table, the column labelled ‘#RSRZ> 2’ contains the number (and percentage) of RSRZ outliers, followed by percent RSRZ outliers for the chain as percentile scores relative to all X-ray entries and entries of similar resolution. The OWAB column contains the minimum, median, 95<sup>th</sup> percentile and maximum values of the occupancy-weighted average B-factor per residue. The column labelled ‘Q< 0.9’ lists the number of (and percentage) of residues with an average occupancy less than 0.9.

Mol	Chain	Analysed	<RSRZ>	#RSRZ>2	OWAB(Å <sup>2</sup> )	Q<0.9
1	A	442/455 (97%)	-0.02	10 (2%) 60 58	28, 45, 73, 95	0
1	B	443/455 (97%)	-0.11	4 (0%) 84 84	29, 44, 71, 92	0
1	C	446/455 (98%)	0.08	10 (2%) 62 59	29, 55, 82, 102	0
1	D	443/455 (97%)	-0.09	3 (0%) 87 87	29, 45, 69, 110	0
1	E	443/455 (97%)	-0.12	6 (1%) 75 75	26, 41, 67, 93	0
1	F	438/455 (96%)	0.14	6 (1%) 75 75	35, 60, 92, 119	0
All	All	2655/2730 (97%)	-0.02	39 (1%) 73 73	26, 48, 80, 119	0

The worst 5 of 39 RSRZ outliers are listed below:

Mol	Chain	Res	Type	RSRZ
1	C	27	PHE	5.1
1	B	27	PHE	5.0
1	E	27	PHE	4.7
1	B	24	THR	4.1
1	A	27	PHE	4.0

### 6.2 Non-standard residues in protein, DNA, RNA chains ⓘ

There are no non-standard protein/DNA/RNA residues in this entry.

### 6.3 Carbohydrates ⓘ

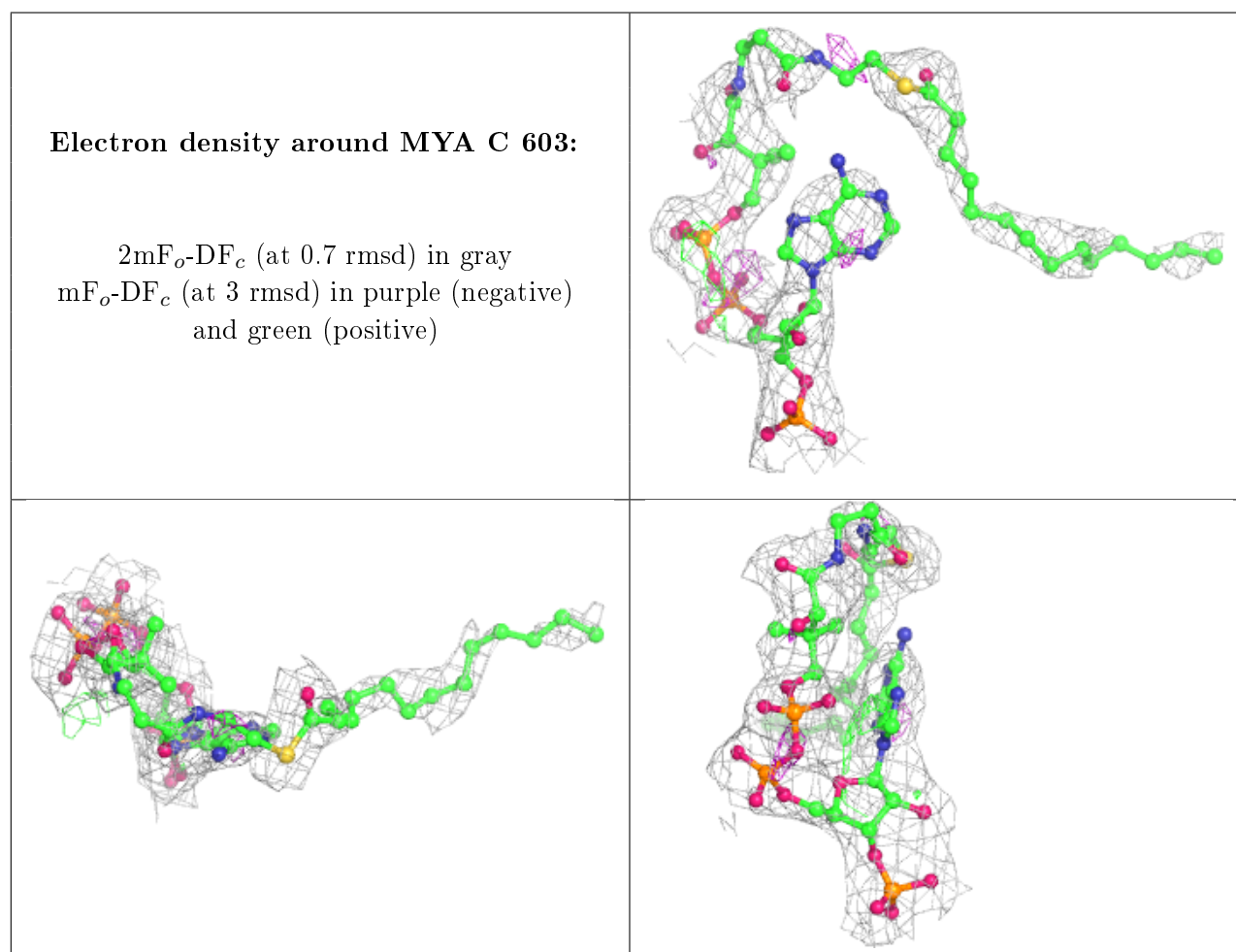
There are no carbohydrates in this entry.

## 6.4 Ligands [i](#)

In the following table, the Atoms column lists the number of modelled atoms in the group and the number defined in the chemical component dictionary. The B-factors column lists the minimum, median, 95<sup>th</sup> percentile and maximum values of B factors of atoms in the group. The column labelled 'Q<0.9' lists the number of atoms with occupancy less than 0.9.

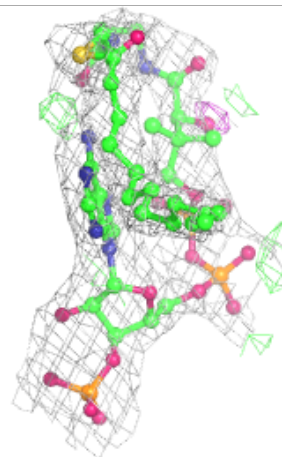
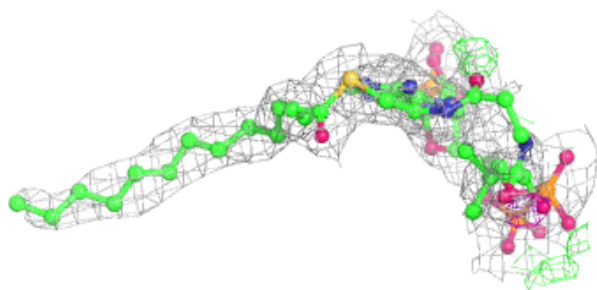
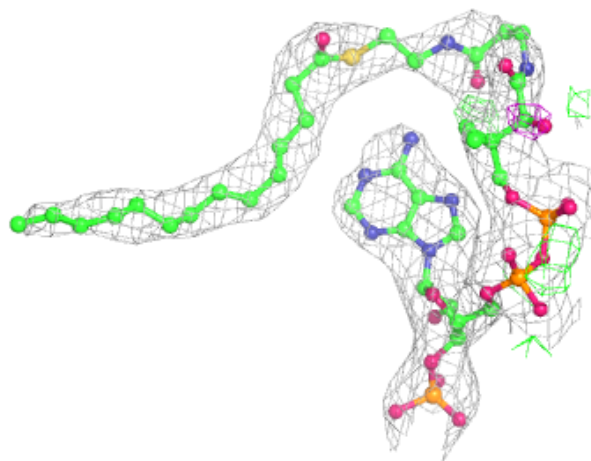
Mol	Type	Chain	Res	Atoms	RSCC	RSR	B-factors( $\text{\AA}^2$ )	Q<0.9
2	MYA	C	603	63/63	0.84	0.28	68,78,82,85	0
2	MYA	D	604	63/63	0.87	0.22	47,62,79,80	0
2	MYA	A	601	63/63	0.87	0.21	51,65,74,74	0
2	MYA	F	606	63/63	0.88	0.25	74,80,83,83	0
2	MYA	E	605	63/63	0.90	0.20	32,57,62,62	0
2	MYA	B	602	63/63	0.90	0.21	31,66,72,73	0

The following is a graphical depiction of the model fit to experimental electron density of all instances of the Ligand of Interest. In addition, ligands with molecular weight > 250 and outliers as shown on the geometry validation Tables will also be included. Each fit is shown from different orientation to approximate a three-dimensional view.



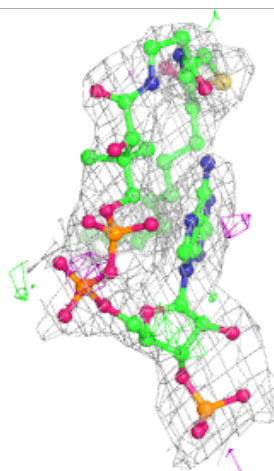
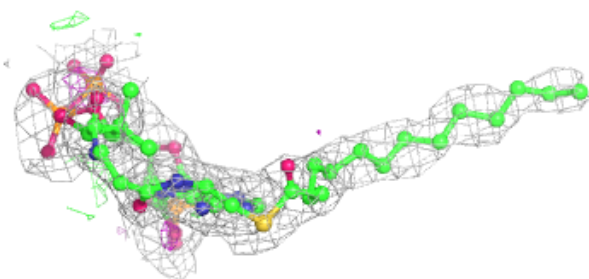
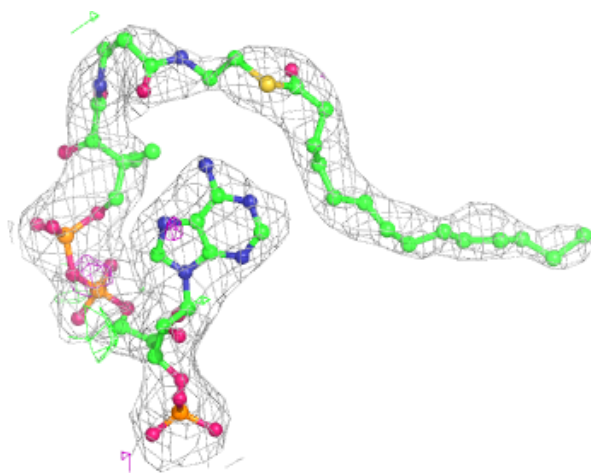
**Electron density around MYA D 604:**

$2mF_o-DF_c$  (at 0.7 rmsd) in gray  
 $mF_o-DF_c$  (at 3 rmsd) in purple (negative)  
and green (positive)



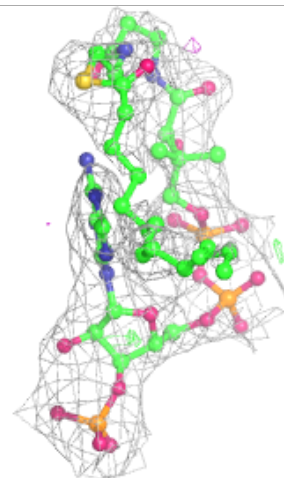
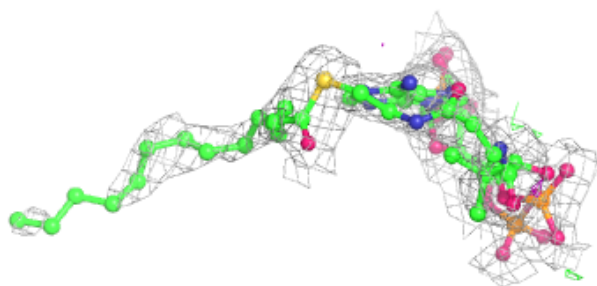
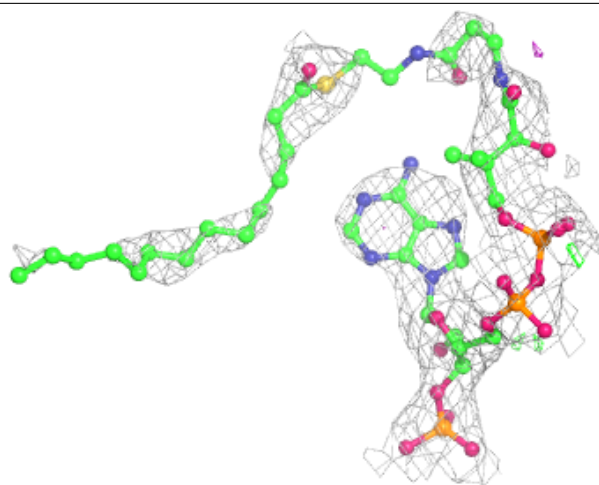
**Electron density around MYA A 601:**

$2mF_o-DF_c$  (at 0.7 rmsd) in gray  
 $mF_o-DF_c$  (at 3 rmsd) in purple (negative)  
and green (positive)



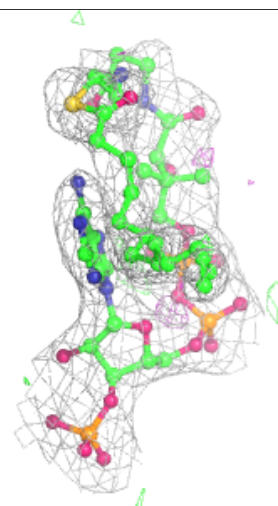
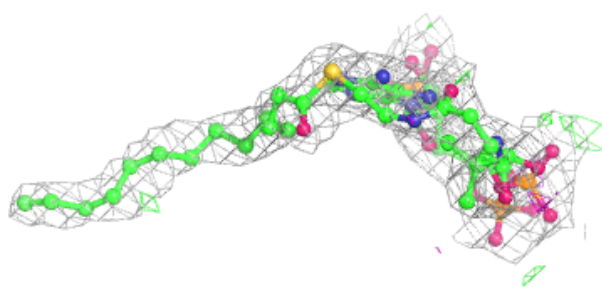
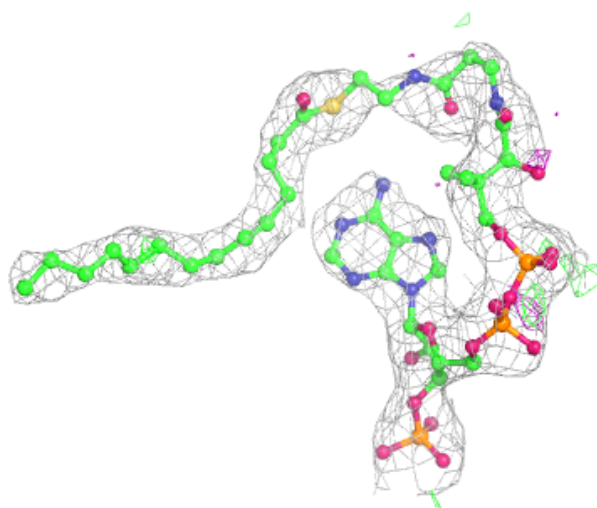
**Electron density around MYA F 606:**

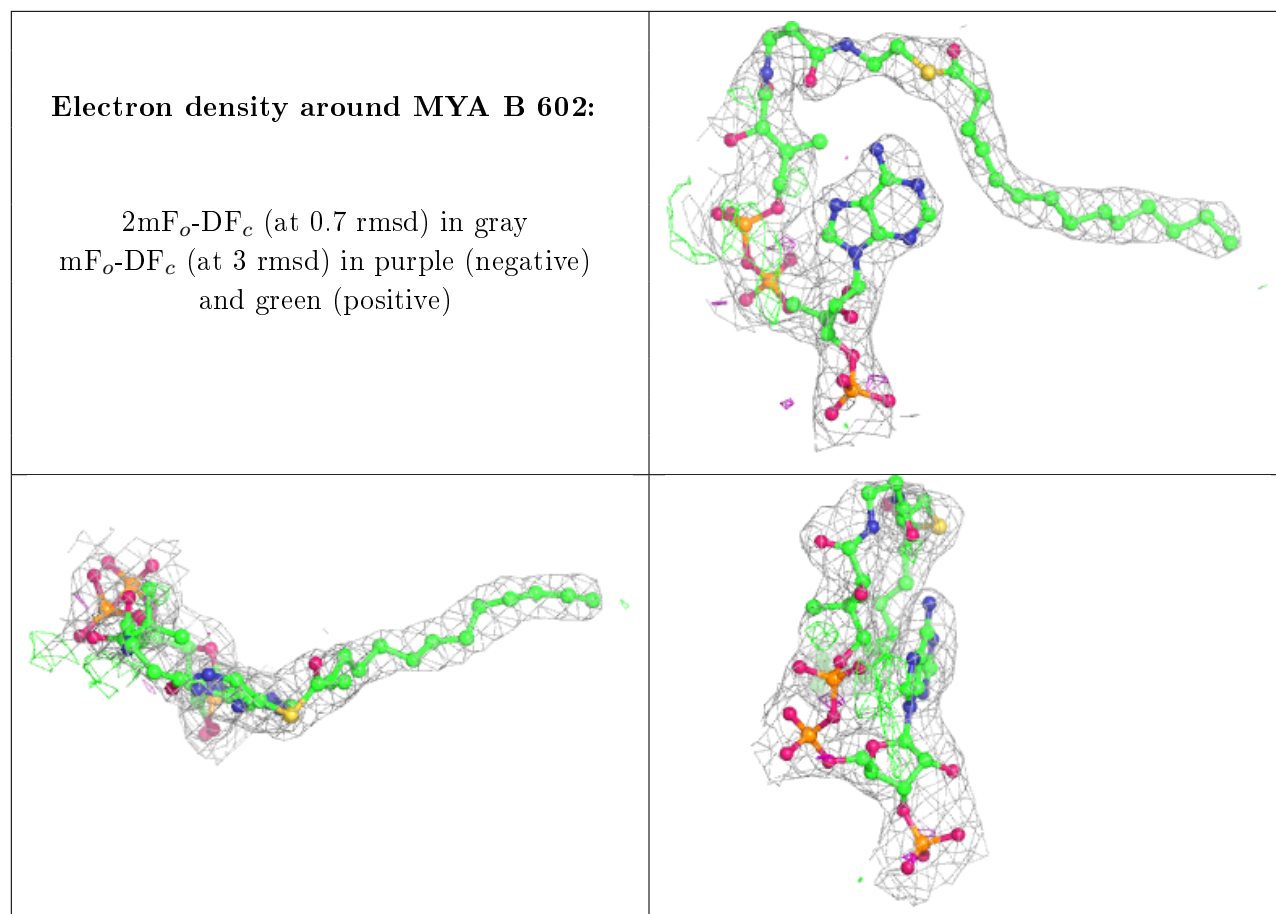
$2mF_o-DF_c$  (at 0.7 rmsd) in gray  
 $mF_o-DF_c$  (at 3 rmsd) in purple (negative)  
and green (positive)



**Electron density around MYA E 605:**

$2mF_o-DF_c$  (at 0.7 rmsd) in gray  
 $mF_o-DF_c$  (at 3 rmsd) in purple (negative)  
and green (positive)





## 6.5 Other polymers [i](#)

There are no such residues in this entry.