



Full wwPDB X-ray Structure Validation Report ⓘ

Aug 29, 2020 – 12:08 PM BST

PDB ID : 2YA8
Title : Crystal structure of Streptococcus pneumoniae NanA (TIGR4) in complex with Oseltamivir carboxylate
Authors : Gut, H.; Xu, G.; Taylor, G.L.; Walsh, M.A.
Deposited on : 2011-02-18
Resolution : 1.75 Å(reported)

This is a Full wwPDB X-ray Structure Validation Report for a publicly released PDB entry.

We welcome your comments at validation@mail.wwpdb.org

A user guide is available at

<https://www.wwpdb.org/validation/2017/XrayValidationReportHelp>

with specific help available everywhere you see the ⓘ symbol.

The following versions of software and data (see [references ⓘ](#)) were used in the production of this report:

MolProbity : 4.02b-467
Mogul : 1.8.5 (274361), CSD as541be (2020)
Xtriage (Phenix) : 1.13
EDS : 2.13
Percentile statistics : 20191225.v01 (using entries in the PDB archive December 25th 2019)
Refmac : 5.8.0158
CCP4 : 7.0.044 (Gargrove)
Ideal geometry (proteins) : Engh & Huber (2001)
Ideal geometry (DNA, RNA) : Parkinson et al. (1996)
Validation Pipeline (wwPDB-VP) : 2.13

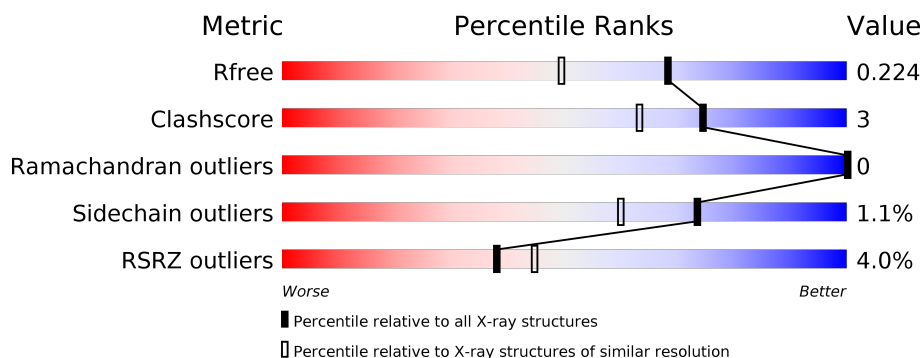
1 Overall quality at a glance

The following experimental techniques were used to determine the structure:

X-RAY DIFFRACTION

The reported resolution of this entry is 1.75 Å.

Percentile scores (ranging between 0-100) for global validation metrics of the entry are shown in the following graphic. The table shows the number of entries on which the scores are based.



Metric	Whole archive (#Entries)	Similar resolution (#Entries, resolution range(Å))
R_{free}	130704	2340 (1.76-1.76)
Clashscore	141614	2466 (1.76-1.76)
Ramachandran outliers	138981	2437 (1.76-1.76)
Sidechain outliers	138945	2437 (1.76-1.76)
RSRZ outliers	127900	2298 (1.76-1.76)

The table below summarises the geometric issues observed across the polymeric chains and their fit to the electron density. The red, orange, yellow and green segments on the lower bar indicate the fraction of residues that contain outliers for ≥ 3 , 2, 1 and 0 types of geometric quality criteria respectively. A grey segment represents the fraction of residues that are not modelled. The numeric value for each fraction is indicated below the corresponding segment, with a dot representing fractions $\leq 5\%$. The upper red bar (where present) indicates the fraction of residues that have poor fit to the electron density. The numeric value is given above the bar.

Mol	Chain	Length	Quality of chain
1	A	493	
1	B	493	

2 Entry composition

There are 6 unique types of molecules in this entry. The entry contains 8552 atoms, of which 0 are hydrogens and 0 are deuteriums.

In the tables below, the ZeroOcc column contains the number of atoms modelled with zero occupancy, the AltConf column contains the number of residues with at least one atom in alternate conformation and the Trace column contains the number of residues modelled with at most 2 atoms.

- Molecule 1 is a protein called NEURAMINIDASE A.

Mol	Chain	Residues	Atoms					ZeroOcc	AltConf	Trace
1	A	470	Total	C	N	O	S	0	4	0
			3751	2347	659	732	13			
1	B	470	Total	C	N	O	S	0	7	0
			3779	2363	666	736	14			

There are 40 discrepancies between the modelled and reference sequences:

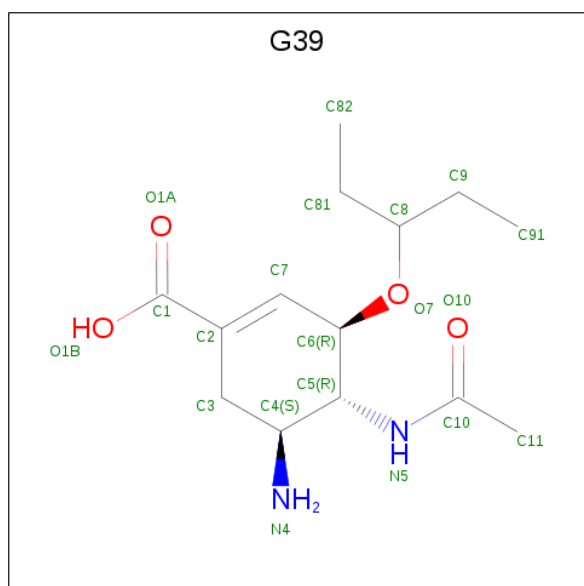
Chain	Residue	Modelled	Actual	Comment	Reference
A	285	ALA	-	expression tag	UNP B2DJD9
A	286	HIS	-	expression tag	UNP B2DJD9
A	287	HIS	-	expression tag	UNP B2DJD9
A	288	HIS	-	expression tag	UNP B2DJD9
A	289	HIS	-	expression tag	UNP B2DJD9
A	290	HIS	-	expression tag	UNP B2DJD9
A	291	HIS	-	expression tag	UNP B2DJD9
A	292	SER	-	expression tag	UNP B2DJD9
A	293	SER	-	expression tag	UNP B2DJD9
A	294	GLY	-	expression tag	UNP B2DJD9
A	295	LEU	-	expression tag	UNP B2DJD9
A	296	GLU	-	expression tag	UNP B2DJD9
A	297	VAL	-	expression tag	UNP B2DJD9
A	298	LEU	-	expression tag	UNP B2DJD9
A	299	PHE	-	expression tag	UNP B2DJD9
A	300	GLN	-	expression tag	UNP B2DJD9
A	301	GLY	-	expression tag	UNP B2DJD9
A	302	PRO	-	expression tag	UNP B2DJD9
A	440	LYS	GLU	SEE REMARK 999	UNP B2DJD9
A	584	ASP	ASN	SEE REMARK 999	UNP B2DJD9
B	285	ALA	-	expression tag	UNP B2DJD9
B	286	HIS	-	expression tag	UNP B2DJD9
B	287	HIS	-	expression tag	UNP B2DJD9
B	288	HIS	-	expression tag	UNP B2DJD9
B	289	HIS	-	expression tag	UNP B2DJD9

Continued on next page...

Continued from previous page...

Chain	Residue	Modelled	Actual	Comment	Reference
B	290	HIS	-	expression tag	UNP B2DJD9
B	291	HIS	-	expression tag	UNP B2DJD9
B	292	SER	-	expression tag	UNP B2DJD9
B	293	SER	-	expression tag	UNP B2DJD9
B	294	GLY	-	expression tag	UNP B2DJD9
B	295	LEU	-	expression tag	UNP B2DJD9
B	296	GLU	-	expression tag	UNP B2DJD9
B	297	VAL	-	expression tag	UNP B2DJD9
B	298	LEU	-	expression tag	UNP B2DJD9
B	299	PHE	-	expression tag	UNP B2DJD9
B	300	GLN	-	expression tag	UNP B2DJD9
B	301	GLY	-	expression tag	UNP B2DJD9
B	302	PRO	-	expression tag	UNP B2DJD9
B	440	LYS	GLU	SEE REMARK 999	UNP B2DJD9
B	584	ASP	ASN	SEE REMARK 999	UNP B2DJD9

- Molecule 2 is (3R,4R,5S)-4-(acetylamino)-5-amino-3-(pentan-3-yloxy)cyclohex-1-ene-1-carboxylic acid (three-letter code: G39) (formula: C₁₄H₂₄N₂O₄).

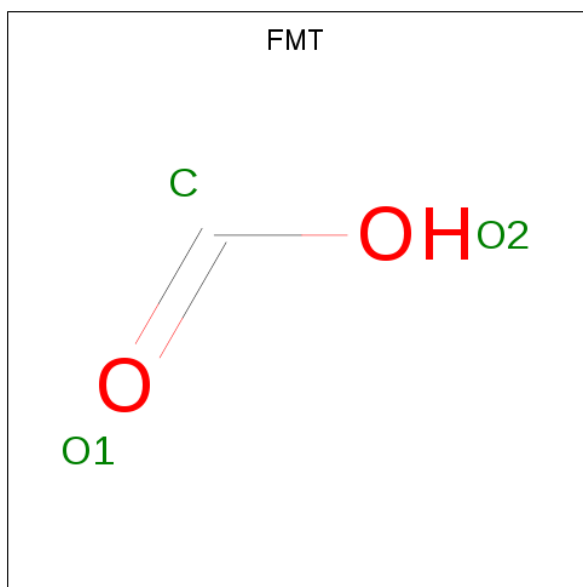


Mol	Chain	Residues	Atoms				ZeroOcc	AltConf
2	A	1	Total	C	N	O	0	0
			20	14	2	4		
2	B	1	Total	C	N	O	0	0
			20	14	2	4		

- Molecule 3 is CHLORIDE ION (three-letter code: CL) (formula: Cl).

Mol	Chain	Residues	Atoms	ZeroOcc	AltConf
3	B	1	Total Cl 1 1	0	0
3	A	1	Total Cl 1 1	0	0

- Molecule 4 is FORMIC ACID (three-letter code: FMT) (formula: CH_2O_2).



Mol	Chain	Residues	Atoms	ZeroOcc	AltConf
4	A	1	Total C O 3 1 2	0	0
4	B	1	Total C O 3 1 2	0	0
4	B	1	Total C O 3 1 2	0	0
4	B	1	Total C O 3 1 2	0	0

- Molecule 5 is 1,2-ETHANEDIOL (three-letter code: EDO) (formula: $\text{C}_2\text{H}_6\text{O}_2$).



Mol	Chain	Residues	Atoms			ZeroOcc	AltConf
5	A	1	Total	C	O	0	0
			4	2	2		
5	A	1	Total	C	O	0	0
			4	2	2		
5	B	1	Total	C	O	0	0
			4	2	2		

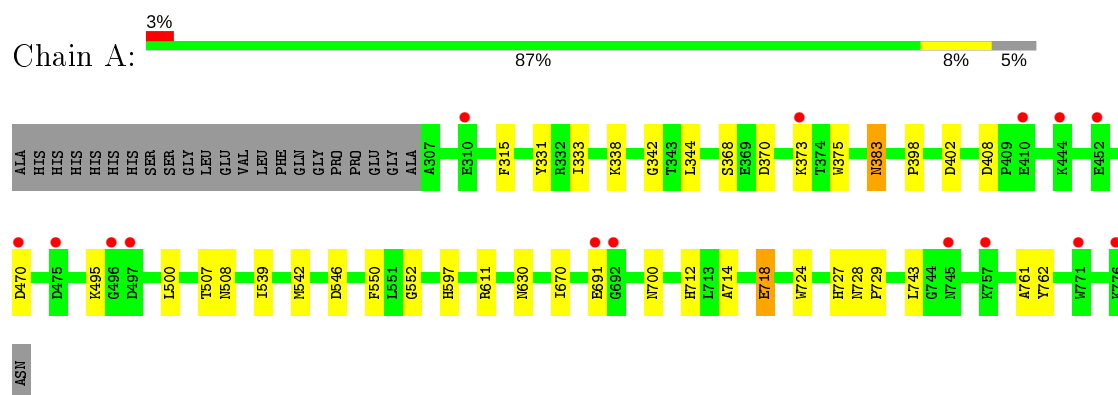
- Molecule 6 is water.

Mol	Chain	Residues	Atoms		ZeroOcc	AltConf
6	A	502	Total	O	0	1
			503	503		
6	B	452	Total	O	0	1
			453	453		

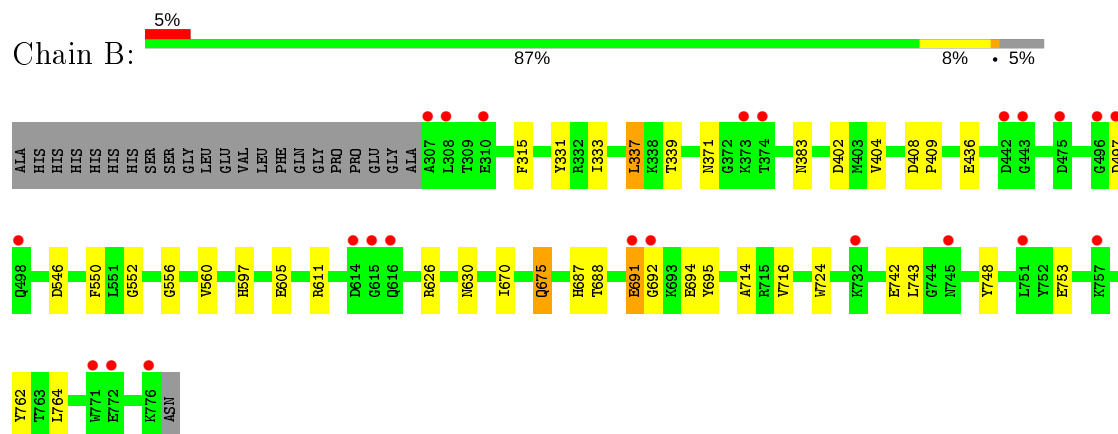
3 Residue-property plots [i](#)

These plots are drawn for all protein, RNA, DNA and oligosaccharide chains in the entry. The first graphic for a chain summarises the proportions of the various outlier classes displayed in the second graphic. The second graphic shows the sequence view annotated by issues in geometry and electron density. Residues are color-coded according to the number of geometric quality criteria for which they contain at least one outlier: green = 0, yellow = 1, orange = 2 and red = 3 or more. A red dot above a residue indicates a poor fit to the electron density ($RSRZ > 2$). Stretches of 2 or more consecutive residues without any outlier are shown as a green connector. Residues present in the sample, but not in the model, are shown in grey.

• Molecule 1: NEURAMINIDASE A



• Molecule 1: NEURAMINIDASE A



4 Data and refinement statistics

Property	Value	Source
Space group	C 1 2 1	Depositor
Cell constants a, b, c, α , β , γ	165.75Å 48.49Å 125.18Å 90.00° 104.04° 90.00°	Depositor
Resolution (Å)	24.95 – 1.75 24.94 – 1.75	Depositor EDS
% Data completeness (in resolution range)	99.9 (24.95-1.75) 99.9 (24.94-1.75)	Depositor EDS
R_{merge}	0.06	Depositor
R_{sym}	(Not available)	Depositor
$\langle I/\sigma(I) \rangle$ ¹	2.52 (at 1.75Å)	Xtriage
Refinement program	REFMAC 5.2.0019	Depositor
R, R_{free}	0.181 , 0.225 0.181 , 0.224	Depositor DCC
R_{free} test set	4897 reflections (5.00%)	wwPDB-VP
Wilson B-factor (Å ²)	21.5	Xtriage
Anisotropy	0.060	Xtriage
Bulk solvent k_{sol} (e/Å ³), B_{sol} (Å ²)	0.35 , 48.8	EDS
L-test for twinning ²	$\langle L \rangle = 0.50$, $\langle L^2 \rangle = 0.33$	Xtriage
Estimated twinning fraction	No twinning to report.	Xtriage
F_o, F_c correlation	0.96	EDS
Total number of atoms	8552	wwPDB-VP
Average B, all atoms (Å ²)	25.0	wwPDB-VP

Xtriage's analysis on translational NCS is as follows: *The largest off-origin peak in the Patterson function is 4.69% of the height of the origin peak. No significant pseudotranslation is detected.*

¹Intensities estimated from amplitudes.

²Theoretical values of $\langle |L| \rangle$, $\langle L^2 \rangle$ for acentric reflections are 0.5, 0.333 respectively for untwinned datasets, and 0.375, 0.2 for perfectly twinned datasets.

5 Model quality [i](#)

5.1 Standard geometry [i](#)

Bond lengths and bond angles in the following residue types are not validated in this section: G39, FMT, EDO, CL

The Z score for a bond length (or angle) is the number of standard deviations the observed value is removed from the expected value. A bond length (or angle) with $|Z| > 5$ is considered an outlier worth inspection. RMSZ is the root-mean-square of all Z scores of the bond lengths (or angles).

Mol	Chain	Bond lengths		Bond angles	
		RMSZ	$\# Z > 5$	RMSZ	$\# Z > 5$
1	A	0.51	0/3832	0.65	0/5176
1	B	0.50	0/3860	0.65	0/5212
All	All	0.51	0/7692	0.65	0/10388

Chiral center outliers are detected by calculating the chiral volume of a chiral center and verifying if the center is modelled as a planar moiety or with the opposite hand. A planarity outlier is detected by checking planarity of atoms in a peptide group, atoms in a mainchain group or atoms of a sidechain that are expected to be planar.

Mol	Chain	#Chirality outliers	#Planarity outliers
1	B	0	1

There are no bond length outliers.

There are no bond angle outliers.

There are no chirality outliers.

All (1) planarity outliers are listed below:

Mol	Chain	Res	Type	Group
1	B	691	GLU	Peptide

5.2 Too-close contacts [i](#)

In the following table, the Non-H and H(model) columns list the number of non-hydrogen atoms and hydrogen atoms in the chain respectively. The H(added) column lists the number of hydrogen atoms added and optimized by MolProbity. The Clashes column lists the number of clashes within the asymmetric unit, whereas Symm-Clashes lists symmetry related clashes.

Mol	Chain	Non-H	H(model)	H(added)	Clashes	Symm-Clashes
1	A	3751	0	3650	24	0
1	B	3779	0	3677	24	0
2	A	20	0	23	0	0
2	B	20	0	23	0	0
3	A	1	0	0	0	0
3	B	1	0	0	0	0
4	A	3	0	1	0	0
4	B	9	0	3	0	0
5	A	8	0	12	0	0
5	B	4	0	6	0	0
6	A	503	0	0	6	0
6	B	453	0	0	4	0
All	All	8552	0	7395	48	0

The all-atom clashscore is defined as the number of clashes found per 1000 atoms (including hydrogen atoms). The all-atom clashscore for this structure is 3.

All (48) close contacts within the same asymmetric unit are listed below, sorted by their clash magnitude.

Atom-1	Atom-2	Interatomic distance (Å)	Clash overlap (Å)
1:B:546[B]:ASP:OD2	6:B:2277:HOH:O	1.65	1.13
1:A:546[B]:ASP:OD2	6:A:2284:HOH:O	1.84	0.96
1:B:626[B]:ARG:NH1	6:B:2353:HOH:O	2.20	0.74
1:A:712:HIS:HD2	1:A:727:HIS:ND1	1.87	0.72
1:A:383:ASN:ND2	6:A:2071:HOH:O	2.25	0.70
1:A:718:GLU:HG3	6:A:2453:HOH:O	1.92	0.70
1:B:742:GLU:HG2	1:B:748:TYR:CE1	2.29	0.68
1:A:691:GLU:OE2	6:A:2433:HOH:O	2.16	0.63
1:A:338:LYS:HE3	1:A:342:GLY:HA2	1.85	0.57
1:B:714:ALA:HB2	1:B:724:TRP:CE3	2.44	0.53
1:A:539:ILE:HG22	1:A:542:MET:HE3	1.91	0.52
1:B:742:GLU:HG2	1:B:748:TYR:HE1	1.75	0.52
1:A:495:LYS:HB2	1:A:500:LEU:HD11	1.93	0.51
1:A:344:LEU:HD21	1:A:743:LEU:HD22	1.93	0.51
1:A:408:ASP:OD2	1:A:597:HIS:HD2	1.92	0.51
1:B:333:ILE:HG21	1:B:402:ASP:HA	1.92	0.51
1:A:700:ASN:OD1	1:A:712:HIS:HE1	1.95	0.50
1:A:315:PHE:HB3	1:A:331:TYR:CG	2.46	0.50
1:B:691:GLU:N	1:B:692:GLY:HA2	2.26	0.50
1:A:333:ILE:HG21	1:A:402:ASP:HA	1.93	0.49
1:B:753:GLU:HG2	1:B:764:LEU:HD22	1.94	0.49
1:B:371:ASN:HD21	1:B:743:LEU:HB3	1.77	0.49

Continued on next page...

Continued from previous page...

Atom-1	Atom-2	Interatomic distance (Å)	Clash overlap (Å)
1:B:371:ASN:HD22	1:B:743:LEU:HD13	1.78	0.49
1:B:315:PHE:HB3	1:B:331:TYR:CG	2.48	0.48
1:B:611:ARG:CZ	1:B:670:ILE:HD12	2.43	0.48
1:B:550:PHE:CZ	1:B:552:GLY:HA3	2.49	0.48
1:B:383:ASN:OD1	6:B:2048:HOH:O	2.20	0.48
1:A:714:ALA:HB2	1:A:724:TRP:CE3	2.49	0.47
1:B:436[B]:GLU:OE2	6:B:2112:HOH:O	2.20	0.47
1:B:753:GLU:HB3	1:B:762:TYR:CG	2.51	0.46
1:B:409:PRO:HD3	1:B:560:VAL:HG21	1.99	0.45
1:A:398:PRO:HG2	6:A:2073:HOH:O	2.16	0.45
1:A:712:HIS:CD2	1:A:727:HIS:ND1	2.78	0.45
1:B:688:THR:HG23	1:B:695:TYR:HB2	1.99	0.45
6:A:2127:HOH:O	1:B:605:GLU:HG2	2.18	0.43
1:B:675:GLN:H	1:B:675:GLN:NE2	2.16	0.43
1:A:728:ASN:HA	1:A:729:PRO:HD3	1.88	0.43
1:A:550:PHE:CZ	1:A:552:GLY:HA3	2.53	0.43
1:B:687:HIS:NE2	1:B:694:GLU:HG3	2.32	0.43
1:A:370:ASP:O	1:A:373:LYS:HG3	2.19	0.43
1:B:337:LEU:HD13	1:B:339:THR:HG22	2.02	0.42
1:A:507:THR:O	1:A:508:ASN:C	2.59	0.42
1:A:761:ALA:HA	1:A:762:TYR:HA	1.84	0.42
1:B:408:ASP:OD2	1:B:597:HIS:HD2	2.02	0.42
1:A:368:SER:HB2	1:A:375:TRP:CD2	2.55	0.41
1:A:611:ARG:CZ	1:A:670:ILE:HD12	2.51	0.41
1:A:408:ASP:OD2	1:A:597:HIS:CD2	2.74	0.41
1:B:404:VAL:HA	1:B:556:GLY:O	2.21	0.41

There are no symmetry-related clashes.

5.3 Torsion angles ⓘ

5.3.1 Protein backbone ⓘ

In the following table, the Percentiles column shows the percent Ramachandran outliers of the chain as a percentile score with respect to all X-ray entries followed by that with respect to entries of similar resolution.

The Analysed column shows the number of residues for which the backbone conformation was analysed, and the total number of residues.

Mol	Chain	Analysed	Favoured	Allowed	Outliers	Percentiles	
1	A	472/493 (96%)	451 (96%)	21 (4%)	0	100	100
1	B	475/493 (96%)	452 (95%)	23 (5%)	0	100	100
All	All	947/986 (96%)	903 (95%)	44 (5%)	0	100	100

There are no Ramachandran outliers to report.

5.3.2 Protein sidechains ⓘ

In the following table, the Percentiles column shows the percent sidechain outliers of the chain as a percentile score with respect to all X-ray entries followed by that with respect to entries of similar resolution.

The Analysed column shows the number of residues for which the sidechain conformation was analysed, and the total number of residues.

Mol	Chain	Analysed	Rotameric	Outliers	Percentiles	
1	A	406/420 (97%)	402 (99%)	4 (1%)	76	63
1	B	409/420 (97%)	404 (99%)	5 (1%)	71	56
All	All	815/840 (97%)	806 (99%)	9 (1%)	73	60

All (9) residues with a non-rotameric sidechain are listed below:

Mol	Chain	Res	Type
1	A	383	ASN
1	A	470	ASP
1	A	630	ASN
1	A	718	GLU
1	B	337	LEU
1	B	497	ASP
1	B	630	ASN
1	B	675	GLN
1	B	716	VAL

Some sidechains can be flipped to improve hydrogen bonding and reduce clashes. All (8) such sidechains are listed below:

Mol	Chain	Res	Type
1	A	383	ASN
1	A	597	HIS
1	A	690	HIS
1	A	712	HIS

Continued on next page...

Continued from previous page...

Mol	Chain	Res	Type
1	B	597	HIS
1	B	675	GLN
1	B	708	ASN
1	B	728	ASN

5.3.3 RNA [i](#)

There are no RNA molecules in this entry.

5.4 Non-standard residues in protein, DNA, RNA chains [i](#)

There are no non-standard protein/DNA/RNA residues in this entry.

5.5 Carbohydrates [i](#)

There are no monosaccharides in this entry.

5.6 Ligand geometry [i](#)

Of 11 ligands modelled in this entry, 2 are monoatomic - leaving 9 for Mogul analysis.

In the following table, the Counts columns list the number of bonds (or angles) for which Mogul statistics could be retrieved, the number of bonds (or angles) that are observed in the model and the number of bonds (or angles) that are defined in the Chemical Component Dictionary. The Link column lists molecule types, if any, to which the group is linked. The Z score for a bond length (or angle) is the number of standard deviations the observed value is removed from the expected value. A bond length (or angle) with $|Z| > 2$ is considered an outlier worth inspection. RMSZ is the root-mean-square of all Z scores of the bond lengths (or angles).

Mol	Type	Chain	Res	Link	Bond lengths			Bond angles		
					Counts	RMSZ	$\# Z > 2$	Counts	RMSZ	$\# Z > 2$
5	EDO	A	1781	-	3,3,3	0.44	0	2,2,2	0.48	0
5	EDO	B	1779	-	3,3,3	0.42	0	2,2,2	0.53	0
5	EDO	A	1780	-	3,3,3	0.49	0	2,2,2	0.54	0
4	FMT	B	1782	-	0,2,2	0.00	-	0,1,1	0.00	-
4	FMT	A	1779	-	0,2,2	0.00	-	0,1,1	0.00	-
2	G39	B	1777	-	17,20,20	0.62	0	15,27,27	0.70	0
2	G39	A	1777	-	17,20,20	0.67	0	15,27,27	0.68	0
4	FMT	B	1781	-	0,2,2	0.00	-	0,1,1	0.00	-
4	FMT	B	1780	-	0,2,2	0.00	-	0,1,1	0.00	-

In the following table, the Chirals column lists the number of chiral outliers, the number of chiral centers analysed, the number of these observed in the model and the number defined in the Chemical Component Dictionary. Similar counts are reported in the Torsion and Rings columns. '-' means no outliers of that kind were identified.

Mol	Type	Chain	Res	Link	Chirals	Torsions	Rings
5	EDO	B	1779	-	-	0/1/1/1	-
5	EDO	A	1781	-	-	0/1/1/1	-
2	G39	B	1777	-	-	0/12/32/32	0/1/1/1
2	G39	A	1777	-	-	0/12/32/32	0/1/1/1
5	EDO	A	1780	-	-	0/1/1/1	-

There are no bond length outliers.

There are no bond angle outliers.

There are no chirality outliers.

There are no torsion outliers.

There are no ring outliers.

No monomer is involved in short contacts.

5.7 Other polymers [i](#)

There are no such residues in this entry.

5.8 Polymer linkage issues [i](#)

There are no chain breaks in this entry.

6 Fit of model and data ⓘ

6.1 Protein, DNA and RNA chains ⓘ

In the following table, the column labelled ‘#RSRZ> 2’ contains the number (and percentage) of RSRZ outliers, followed by percent RSRZ outliers for the chain as percentile scores relative to all X-ray entries and entries of similar resolution. The OWAB column contains the minimum, median, 95th percentile and maximum values of the occupancy-weighted average B-factor per residue. The column labelled ‘Q< 0.9’ lists the number of (and percentage) of residues with an average occupancy less than 0.9.

Mol	Chain	Analysed	<RSRZ>	#RSRZ>2	OWAB(Å ²)	Q<0.9
1	A	470/493 (95%)	0.07	15 (3%) 47 54	12, 22, 35, 44	0
1	B	470/493 (95%)	0.26	23 (4%) 29 35	12, 24, 42, 58	0
All	All	940/986 (95%)	0.16	38 (4%) 38 45	12, 23, 38, 58	0

All (38) RSRZ outliers are listed below:

Mol	Chain	Res	Type	RSRZ
1	B	771	TRP	4.6
1	B	772	GLU	4.1
1	A	497	ASP	3.9
1	B	310	GLU	3.9
1	B	692	GLY	3.7
1	B	374	THR	3.6
1	B	776	LYS	3.5
1	A	691	GLU	3.3
1	B	442	ASP	3.3
1	A	771	TRP	3.3
1	A	496	GLY	3.1
1	B	691	GLU	3.1
1	B	745	ASN	3.0
1	B	308	LEU	3.0
1	B	497	ASP	3.0
1	A	745	ASN	2.9
1	A	475	ASP	2.7
1	A	757	LYS	2.7
1	B	757	LYS	2.7
1	A	470	ASP	2.6
1	A	373	LYS	2.4
1	B	475	ASP	2.4
1	B	615	GLY	2.4
1	B	732	LYS	2.4

Continued on next page...

Continued from previous page...

Mol	Chain	Res	Type	RSRZ
1	B	443	GLY	2.4
1	A	452	GLU	2.3
1	B	498	GLN	2.3
1	A	692	GLY	2.3
1	A	410	GLU	2.2
1	B	616	GLN	2.2
1	A	444	LYS	2.2
1	B	373	LYS	2.2
1	B	307	ALA	2.1
1	A	776	LYS	2.1
1	B	496	GLY	2.1
1	B	614	ASP	2.0
1	B	751	LEU	2.0
1	A	310	GLU	2.0

6.2 Non-standard residues in protein, DNA, RNA chains [i](#)

There are no non-standard protein/DNA/RNA residues in this entry.

6.3 Carbohydrates [i](#)

There are no monosaccharides in this entry.

6.4 Ligands [i](#)

In the following table, the Atoms column lists the number of modelled atoms in the group and the number defined in the chemical component dictionary. The B-factors column lists the minimum, median, 95th percentile and maximum values of B factors of atoms in the group. The column labelled 'Q<0.9' lists the number of atoms with occupancy less than 0.9.

Mol	Type	Chain	Res	Atoms	RSCC	RSR	B-factors(\AA^2)	Q<0.9
4	FMT	B	1781	3/3	0.86	0.10	39,39,39,39	0
4	FMT	A	1779	3/3	0.88	0.12	40,40,41,41	0
4	FMT	B	1782	3/3	0.90	0.10	38,38,38,38	0
5	EDO	A	1781	4/4	0.91	0.10	30,31,32,33	0
4	FMT	B	1780	3/3	0.93	0.12	36,36,36,36	0
5	EDO	B	1779	4/4	0.94	0.09	28,28,30,31	0
5	EDO	A	1780	4/4	0.94	0.09	29,30,32,33	0
2	G39	B	1777	20/20	0.95	0.09	19,22,32,33	0
2	G39	A	1777	20/20	0.96	0.08	16,17,27,31	0

Continued on next page...

Continued from previous page...

Mol	Type	Chain	Res	Atoms	RSCC	RSR	B-factors(\AA^2)	Q<0.9
3	CL	A	1778	1/1	0.99	0.05	20,20,20,20	0
3	CL	B	1778	1/1	0.99	0.09	20,20,20,20	0

6.5 Other polymers [i](#)

There are no such residues in this entry.