



# wwPDB X-ray Structure Validation Summary Report ⓘ

Sep 14, 2020 – 04:25 PM BST

PDB ID : 6Z6V  
Title : Globular head of C1q in complex with the nanobody C1qNb75  
Authors : Laursen, N.S.; Andersen, G.R.  
Deposited on : 2020-05-29  
Resolution : 2.19 Å(reported)

This is a wwPDB X-ray Structure Validation Summary Report for a publicly released PDB entry.

We welcome your comments at [validation@mail.wwpdb.org](mailto:validation@mail.wwpdb.org)

A user guide is available at

<https://www.wwpdb.org/validation/2017/XrayValidationReportHelp>

with specific help available everywhere you see the ⓘ symbol.

---

The following versions of software and data (see [references ⓘ](#)) were used in the production of this report:

MolProbity : 4.02b-467  
Mogul : 1.8.5 (274361), CSD as541be (2020)  
Xtriage (Phenix) : 1.13  
EDS : 2.14.4.dev1  
buster-report : 1.1.7 (2018)  
Percentile statistics : 20191225.v01 (using entries in the PDB archive December 25th 2019)  
Refmac : 5.8.0158  
CCP4 : 7.0.044 (Gargrove)  
Ideal geometry (proteins) : Engh & Huber (2001)  
Ideal geometry (DNA, RNA) : Parkinson et al. (1996)  
Validation Pipeline (wwPDB-VP) : 2.14.4.dev1

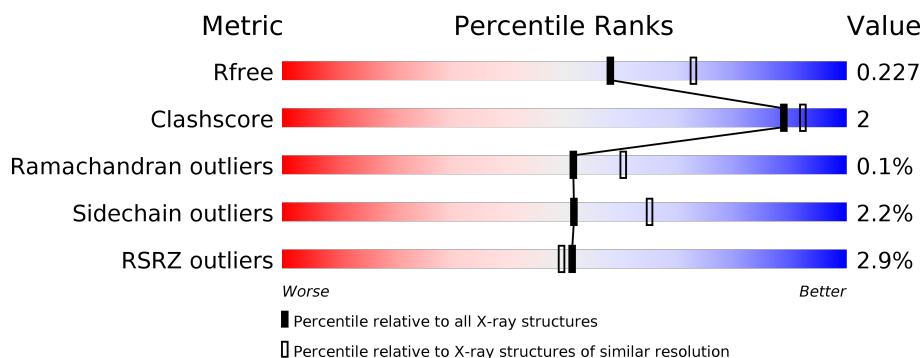
# 1 Overall quality at a glance

The following experimental techniques were used to determine the structure:

*X-RAY DIFFRACTION*

The reported resolution of this entry is 2.19 Å.

Percentile scores (ranging between 0-100) for global validation metrics of the entry are shown in the following graphic. The table shows the number of entries on which the scores are based.



Metric	Whole archive (#Entries)	Similar resolution (#Entries, resolution range(Å))
$R_{free}$	130704	4898 (2.20-2.20)
Clashscore	141614	5594 (2.20-2.20)
Ramachandran outliers	138981	5503 (2.20-2.20)
Sidechain outliers	138945	5504 (2.20-2.20)
RSRZ outliers	127900	4800 (2.20-2.20)

The table below summarises the geometric issues observed across the polymeric chains and their fit to the electron density. The red, orange, yellow and green segments on the lower bar indicate the fraction of residues that contain outliers for  $\geq 3$ , 2, 1 and 0 types of geometric quality criteria respectively. A grey segment represents the fraction of residues that are not modelled. The numeric value for each fraction is indicated below the corresponding segment, with a dot representing fractions  $\leq 5\%$ . The upper red bar (where present) indicates the fraction of residues that have poor fit to the electron density. The numeric value is given above the bar.

Mol	Chain	Length	Quality of chain
1	A	136	<div> <div>3%</div> <div> <div></div> <div>91%</div> <div>7%</div> <div>.</div> </div> </div>
1	D	136	<div> <div>4%</div> <div> <div></div> <div>92%</div> <div>.</div> <div>.</div> </div> </div>
2	B	141	<div> <div>2%</div> <div> <div></div> <div>88%</div> <div>6%</div> <div>6%</div> </div> </div>
2	E	141	<div> <div>2%</div> <div> <div></div> <div>89%</div> <div>6%</div> <div>6%</div> </div> </div>
3	C	139	<div> <div>%</div> <div> <div></div> <div>83%</div> <div>9%</div> <div>.</div> <div>8%</div> </div> </div>
3	F	139	<div> <div>2%</div> <div> <div></div> <div>87%</div> <div>6%</div> <div>.</div> <div>6%</div> </div> </div>

*Continued on next page...*

Continued from previous page...

Mol	Chain	Length	Quality of chain
4	G	131	<div><div>%</div><div><div></div><div>87%</div><div>6%7%</div></div></div>
4	H	131	<div><div>8%</div><div><div></div><div>85%</div><div>6%6%</div></div></div>

## 2 Entry composition

There are 6 unique types of molecules in this entry. The entry contains 8476 atoms, of which 0 are hydrogens and 0 are deuteriums.

In the tables below, the ZeroOcc column contains the number of atoms modelled with zero occupancy, the AltConf column contains the number of residues with at least one atom in alternate conformation and the Trace column contains the number of residues modelled with at most 2 atoms.

- Molecule 1 is a protein called Complement C1q subcomponent subunit A.

Mol	Chain	Residues	Atoms					ZeroOcc	AltConf	Trace
1	A	133	Total	C	N	O	S	0	0	0
			1047	669	180	193	5			
1	D	133	Total	C	N	O	S	0	0	0
			1051	671	181	194	5			

- Molecule 2 is a protein called Complement C1q subcomponent subunit B.

Mol	Chain	Residues	Atoms					ZeroOcc	AltConf	Trace
2	B	133	Total	C	N	O	S	0	0	0
			1060	670	187	195	8			
2	E	133	Total	C	N	O	S	0	0	0
			1060	670	187	195	8			

There are 12 discrepancies between the modelled and reference sequences:

Chain	Residue	Modelled	Actual	Comment	Reference
B	227	HIS	-	expression tag	UNP P02746
B	228	HIS	-	expression tag	UNP P02746
B	229	HIS	-	expression tag	UNP P02746
B	230	HIS	-	expression tag	UNP P02746
B	231	HIS	-	expression tag	UNP P02746
B	232	HIS	-	expression tag	UNP P02746
E	227	HIS	-	expression tag	UNP P02746
E	228	HIS	-	expression tag	UNP P02746
E	229	HIS	-	expression tag	UNP P02746
E	230	HIS	-	expression tag	UNP P02746
E	231	HIS	-	expression tag	UNP P02746
E	232	HIS	-	expression tag	UNP P02746

- Molecule 3 is a protein called Complement C1q subcomponent subunit C.

Mol	Chain	Residues	Atoms					ZeroOcc	AltConf	Trace
3	C	128	Total	C	N	O	S	0	0	0
			1003	645	169	185	4			
3	F	131	Total	C	N	O	S	0	0	0
			1023	658	173	188	4			

There are 16 discrepancies between the modelled and reference sequences:

Chain	Residue	Modelled	Actual	Comment	Reference
C	84	GLY	-	expression tag	UNP P02747
C	85	SER	-	expression tag	UNP P02747
C	86	GLY	-	expression tag	UNP P02747
C	218	GLY	-	expression tag	UNP P02747
C	219	SER	-	expression tag	UNP P02747
C	220	ALA	-	expression tag	UNP P02747
C	221	LYS	-	expression tag	UNP P02747
C	222	ALA	-	expression tag	UNP P02747
F	84	GLY	-	expression tag	UNP P02747
F	85	SER	-	expression tag	UNP P02747
F	86	GLY	-	expression tag	UNP P02747
F	218	GLY	-	expression tag	UNP P02747
F	219	SER	-	expression tag	UNP P02747
F	220	ALA	-	expression tag	UNP P02747
F	221	LYS	-	expression tag	UNP P02747
F	222	ALA	-	expression tag	UNP P02747

- Molecule 4 is a protein called Nanobody C1q75.

Mol	Chain	Residues	Atoms					ZeroOcc	AltConf	Trace
4	G	122	Total	C	N	O	S	0	0	0
			931	579	164	183	5			
4	H	123	Total	C	N	O	S	0	1	0
			941	586	165	185	5			

- Molecule 5 is 2-acetamido-2-deoxy-beta-D-glucopyranose (three-letter code: NAG) (formula: C<sub>8</sub>H<sub>15</sub>NO<sub>6</sub>) (labeled as "Ligand of Interest" by author).



Mol	Chain	Residues	Atoms				ZeroOcc	AltConf
5	A	1	Total	C	N	O	0	0
			14	8	1	5		
5	D	1	Total	C	N	O	0	0
			14	8	1	5		

- Molecule 6 is water.

Mol	Chain	Residues	Atoms		ZeroOcc	AltConf
6	A	35	Total	O	0	0
			35	35		
6	B	38	Total	O	0	0
			38	38		
6	C	51	Total	O	0	0
			51	51		
6	D	56	Total	O	0	0
			56	56		
6	E	37	Total	O	0	0
			37	37		
6	F	47	Total	O	0	0
			47	47		
6	G	38	Total	O	0	0
			38	38		
6	H	30	Total	O	0	0
			30	30		

### 3 Residue-property plots [i](#)

These plots are drawn for all protein, RNA, DNA and oligosaccharide chains in the entry. The first graphic for a chain summarises the proportions of the various outlier classes displayed in the second graphic. The second graphic shows the sequence view annotated by issues in geometry and electron density. Residues are color-coded according to the number of geometric quality criteria for which they contain at least one outlier: green = 0, yellow = 1, orange = 2 and red = 3 or more. A red dot above a residue indicates a poor fit to the electron density ( $RSRZ > 2$ ). Stretches of 2 or more consecutive residues without any outlier are shown as a green connector. Residues present in the sample, but not in the model, are shown in grey.

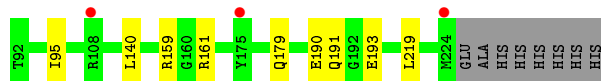
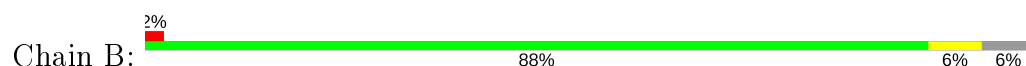
- Molecule 1: Complement C1q subcomponent subunit A



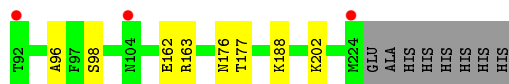
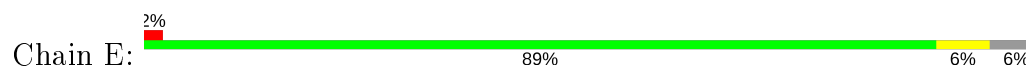
- Molecule 1: Complement C1q subcomponent subunit A



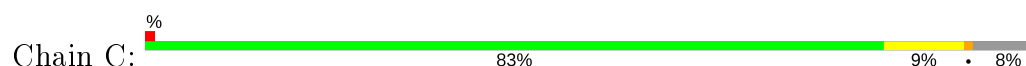
- Molecule 2: Complement C1q subcomponent subunit B



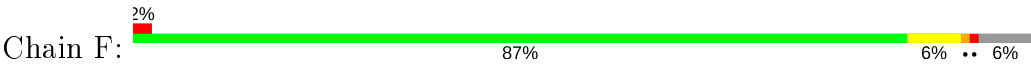
- Molecule 2: Complement C1q subcomponent subunit B



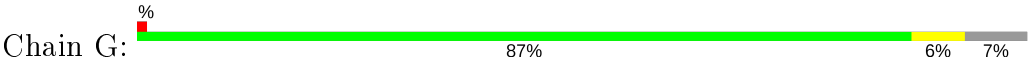
- Molecule 3: Complement C1q subcomponent subunit C



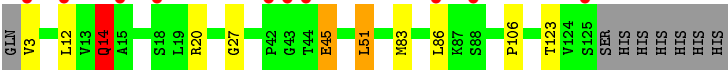
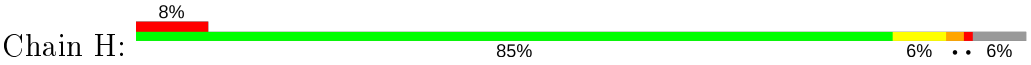
- Molecule 3: Complement C1q subcomponent subunit C



• Molecule 4: Nanobody C1q75



• Molecule 4: Nanobody C1q75





## 4 Data and refinement statistics

Property	Value	Source
Space group	P 2 21 21	Depositor
Cell constants a, b, c, $\alpha$ , $\beta$ , $\gamma$	61.82Å 119.74Å 131.77Å 90.00° 90.00° 90.00°	Depositor
Resolution (Å)	65.89 – 2.19 65.89 – 2.19	Depositor EDS
% Data completeness (in resolution range)	94.7 (65.89-2.19) 94.7 (65.89-2.19)	Depositor EDS
$R_{merge}$	(Not available)	Depositor
$R_{sym}$	0.12	Depositor
$\langle I/\sigma(I) \rangle$ <sup>1</sup>	1.33 (at 2.18Å)	Xtriage
Refinement program	PHENIX 1.16_3549	Depositor
R, $R_{free}$	0.178 , 0.227 0.178 , 0.227	Depositor DCC
$R_{free}$ test set	2000 reflections (4.12%)	wwPDB-VP
Wilson B-factor (Å <sup>2</sup> )	38.5	Xtriage
Anisotropy	0.450	Xtriage
Bulk solvent $k_{sol}$ (e/Å <sup>3</sup> ), $B_{sol}$ (Å <sup>2</sup> )	0.30 , 39.3	EDS
L-test for twinning <sup>2</sup>	$\langle  L  \rangle = 0.50$ , $\langle L^2 \rangle = 0.33$	Xtriage
Estimated twinning fraction	No twinning to report.	Xtriage
$F_o, F_c$ correlation	0.96	EDS
Total number of atoms	8476	wwPDB-VP
Average B, all atoms (Å <sup>2</sup> )	46.0	wwPDB-VP

Xtriage's analysis on translational NCS is as follows: *The largest off-origin peak in the Patterson function is 3.23% of the height of the origin peak. No significant pseudotranslation is detected.*

<sup>1</sup>Intensities estimated from amplitudes.

<sup>2</sup>Theoretical values of  $\langle |L| \rangle$ ,  $\langle L^2 \rangle$  for acentric reflections are 0.5, 0.333 respectively for untwinned datasets, and 0.375, 0.2 for perfectly twinned datasets.

## 5 Model quality

### 5.1 Standard geometry

Bond lengths and bond angles in the following residue types are not validated in this section:  
NAG

The Z score for a bond length (or angle) is the number of standard deviations the observed value is removed from the expected value. A bond length (or angle) with  $|Z| > 5$  is considered an outlier worth inspection. RMSZ is the root-mean-square of all Z scores of the bond lengths (or angles).

Mol	Chain	Bond lengths		Bond angles	
		RMSZ	$\# Z  > 5$	RMSZ	$\# Z  > 5$
1	A	0.52	0/1075	0.74	0/1457
1	D	0.54	0/1079	0.77	2/1463 (0.1%)
2	B	0.50	0/1081	0.74	0/1458
2	E	0.46	0/1081	0.71	0/1458
3	C	0.57	0/1029	0.77	2/1401 (0.1%)
3	F	0.58	0/1050	0.90	4/1429 (0.3%)
4	G	0.53	0/953	0.75	0/1293
4	H	0.57	0/966	0.85	2/1311 (0.2%)
All	All	0.53	0/8314	0.78	10/11270 (0.1%)

Chiral center outliers are detected by calculating the chiral volume of a chiral center and verifying if the center is modelled as a planar moiety or with the opposite hand. A planarity outlier is detected by checking planarity of atoms in a peptide group, atoms in a mainchain group or atoms of a sidechain that are expected to be planar.

Mol	Chain	#Chirality outliers	#Planarity outliers
2	E	0	1

There are no bond length outliers.

The worst 5 of 10 bond angle outliers are listed below:

Mol	Chain	Res	Type	Atoms	Z	Observed(°)	Ideal(°)
4	H	51	LEU	CA-CB-CG	10.02	138.35	115.30
3	F	182	ARG	NE-CZ-NH1	9.25	124.93	120.30
4	H	14	GLN	CA-CB-CG	7.78	130.51	113.40
1	D	163	ARG	CG-CD-NE	7.55	127.66	111.80
3	F	137	LEU	CA-CB-CG	-7.49	98.08	115.30

There are no chirality outliers.

All (1) planarity outliers are listed below:

Mol	Chain	Res	Type	Group
2	E	162	GLU	Peptide

## 5.2 Too-close contacts ⓘ

In the following table, the Non-H and H(model) columns list the number of non-hydrogen atoms and hydrogen atoms in the chain respectively. The H(added) column lists the number of hydrogen atoms added and optimized by MolProbity. The Clashes column lists the number of clashes within the asymmetric unit, whereas Symm-Clashes lists symmetry related clashes.

Mol	Chain	Non-H	H(model)	H(added)	Clashes	Symm-Clashes
1	A	1047	0	1012	4	1
1	D	1051	0	1014	3	0
2	B	1060	0	1043	5	0
2	E	1060	0	1043	2	0
3	C	1003	0	976	5	0
3	F	1023	0	997	4	0
4	G	931	0	869	3	0
4	H	941	0	883	7	1
5	A	14	0	13	1	0
5	D	14	0	13	0	0
6	A	35	0	0	1	0
6	B	38	0	0	1	0
6	C	51	0	0	0	0
6	D	56	0	0	0	0
6	E	37	0	0	0	0
6	F	47	0	0	0	0
6	G	38	0	0	0	0
6	H	30	0	0	1	0
All	All	8476	0	7863	31	1

The all-atom clashscore is defined as the number of clashes found per 1000 atoms (including hydrogen atoms). The all-atom clashscore for this structure is 2.

The worst 5 of 31 close contacts within the same asymmetric unit are listed below, sorted by their clash magnitude.

Atom-1	Atom-2	Interatomic distance (Å)	Clash overlap (Å)
5:A:1001:NAG:O6	6:A:1101:HOH:O	2.06	0.72
3:F:137:LEU:HD23	3:F:214:LEU:HD12	1.70	0.71
4:H:83:MET:HB3	4:H:86:LEU:HD21	1.76	0.67
1:A:169:ASP:OD1	1:A:177:GLN:OE1	2.13	0.66
3:F:103:PRO:HB3	3:F:199:MET:H	1.59	0.66

All (1) symmetry-related close contacts are listed below. The label for Atom-2 includes the symmetry operator and encoded unit-cell translations to be applied.

Atom-1	Atom-2	Interatomic distance (Å)	Clash overlap (Å)
1:A:100:ARG:NH1	4:H:45:GLU:OE1[4_654]	1.60	0.60

## 5.3 Torsion angles [i](#)

### 5.3.1 Protein backbone [i](#)

In the following table, the Percentiles column shows the percent Ramachandran outliers of the chain as a percentile score with respect to all X-ray entries followed by that with respect to entries of similar resolution.

The Analysed column shows the number of residues for which the backbone conformation was analysed, and the total number of residues.

Mol	Chain	Analysed	Favoured	Allowed	Outliers	Percentiles	
1	A	131/136 (96%)	123 (94%)	8 (6%)	0	100	100
1	D	131/136 (96%)	126 (96%)	5 (4%)	0	100	100
2	B	131/141 (93%)	124 (95%)	7 (5%)	0	100	100
2	E	131/141 (93%)	126 (96%)	5 (4%)	0	100	100
3	C	126/139 (91%)	121 (96%)	5 (4%)	0	100	100
3	F	129/139 (93%)	123 (95%)	5 (4%)	1 (1%)	19	19
4	G	120/131 (92%)	117 (98%)	3 (2%)	0	100	100
4	H	122/131 (93%)	120 (98%)	2 (2%)	0	100	100
All	All	1021/1094 (93%)	980 (96%)	40 (4%)	1 (0%)	51	60

All (1) Ramachandran outliers are listed below:

Mol	Chain	Res	Type
3	F	170	LYS

### 5.3.2 Protein sidechains [i](#)

In the following table, the Percentiles column shows the percent sidechain outliers of the chain as a percentile score with respect to all X-ray entries followed by that with respect to entries of similar resolution.

The Analysed column shows the number of residues for which the sidechain conformation was

analysed, and the total number of residues.

Mol	Chain	Analysed	Rotameric	Outliers	Percentiles	
1	A	116/119 (98%)	114 (98%)	2 (2%)	60	74
1	D	117/119 (98%)	115 (98%)	2 (2%)	60	74
2	B	116/123 (94%)	115 (99%)	1 (1%)	78	88
2	E	116/123 (94%)	112 (97%)	4 (3%)	37	47
3	C	112/118 (95%)	108 (96%)	4 (4%)	35	45
3	F	114/118 (97%)	112 (98%)	2 (2%)	59	72
4	G	95/104 (91%)	93 (98%)	2 (2%)	53	67
4	H	97/104 (93%)	95 (98%)	2 (2%)	53	67
All	All	883/928 (95%)	864 (98%)	19 (2%)	52	65

5 of 19 residues with a non-rotameric sidechain are listed below:

Mol	Chain	Res	Type
1	D	163	ARG
2	E	163	ARG
4	G	4	GLN
1	D	158	ARG
4	G	72	ARG

Some sidechains can be flipped to improve hydrogen bonding and reduce clashes. All (3) such sidechains are listed below:

Mol	Chain	Res	Type
1	A	107	ASN
2	B	176	ASN
4	H	14	GLN

### 5.3.3 RNA ⓘ

There are no RNA molecules in this entry.

## 5.4 Non-standard residues in protein, DNA, RNA chains ⓘ

There are no non-standard protein/DNA/RNA residues in this entry.

## 5.5 Carbohydrates

There are no monosaccharides in this entry.

## 5.6 Ligand geometry

2 ligands are modelled in this entry.

In the following table, the Counts columns list the number of bonds (or angles) for which Mogul statistics could be retrieved, the number of bonds (or angles) that are observed in the model and the number of bonds (or angles) that are defined in the Chemical Component Dictionary. The Link column lists molecule types, if any, to which the group is linked. The Z score for a bond length (or angle) is the number of standard deviations the observed value is removed from the expected value. A bond length (or angle) with  $|Z| > 2$  is considered an outlier worth inspection. RMSZ is the root-mean-square of all Z scores of the bond lengths (or angles).

Mol	Type	Chain	Res	Link	Bond lengths			Bond angles		
					Counts	RMSZ	$\# Z  > 2$	Counts	RMSZ	$\# Z  > 2$
5	NAG	A	1001	1	14,14,15	0.69	1 (7%)	17,19,21	0.66	1 (5%)
5	NAG	D	1001	1	14,14,15	0.87	1 (7%)	17,19,21	0.64	1 (5%)

In the following table, the Chirals column lists the number of chiral outliers, the number of chiral centers analysed, the number of these observed in the model and the number defined in the Chemical Component Dictionary. Similar counts are reported in the Torsion and Rings columns. '-' means no outliers of that kind were identified.

Mol	Type	Chain	Res	Link	Chirals	Torsions	Rings
5	NAG	A	1001	1	-	0/6/23/26	0/1/1/1
5	NAG	D	1001	1	-	1/6/23/26	0/1/1/1

All (2) bond length outliers are listed below:

Mol	Chain	Res	Type	Atoms	Z	Observed(Å)	Ideal(Å)
5	D	1001	NAG	O5-C1	2.94	1.48	1.43
5	A	1001	NAG	O5-C1	2.28	1.47	1.43

All (2) bond angle outliers are listed below:

Mol	Chain	Res	Type	Atoms	Z	Observed(°)	Ideal(°)
5	A	1001	NAG	C1-O5-C5	2.24	115.23	112.19
5	D	1001	NAG	C1-O5-C5	2.19	115.16	112.19

There are no chirality outliers.

All (1) torsion outliers are listed below:

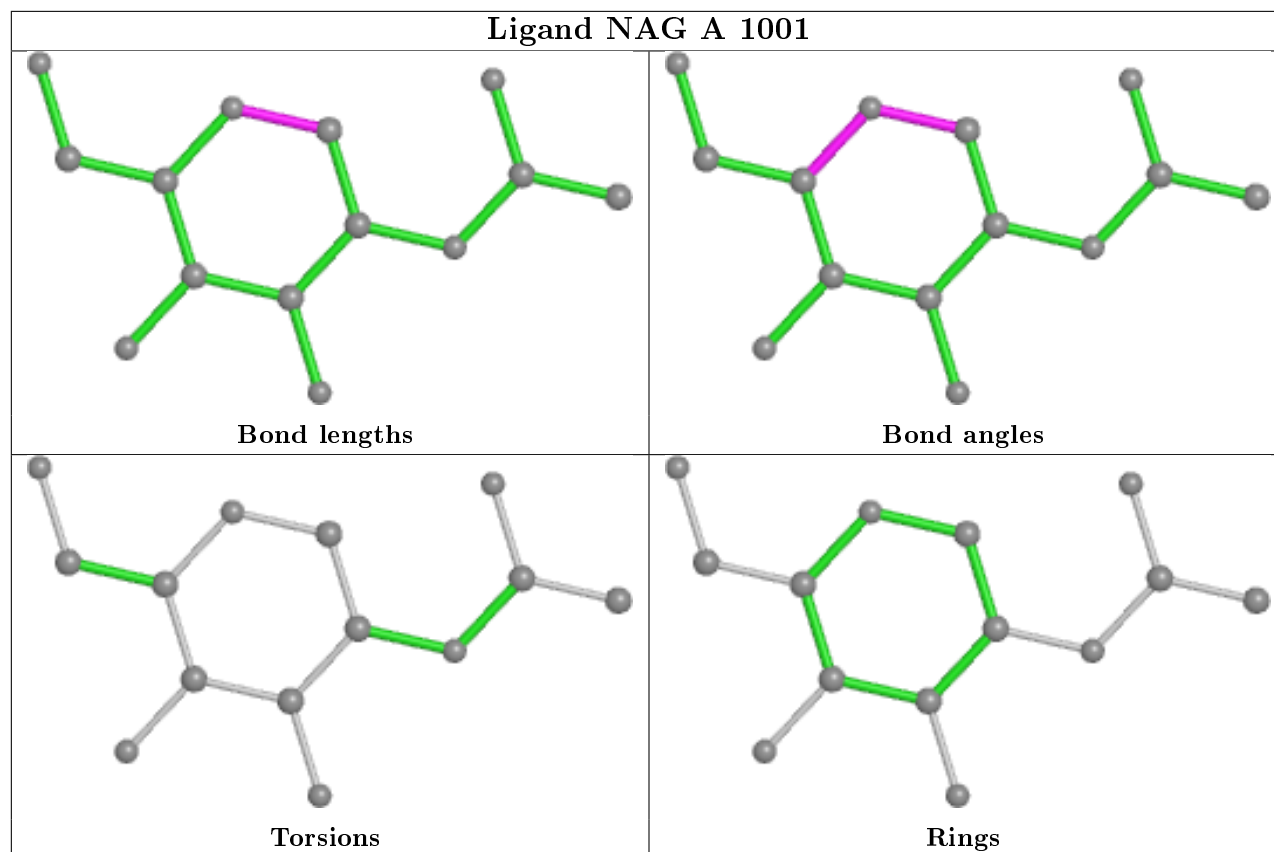
Mol	Chain	Res	Type	Atoms
5	D	1001	NAG	C4-C5-C6-O6

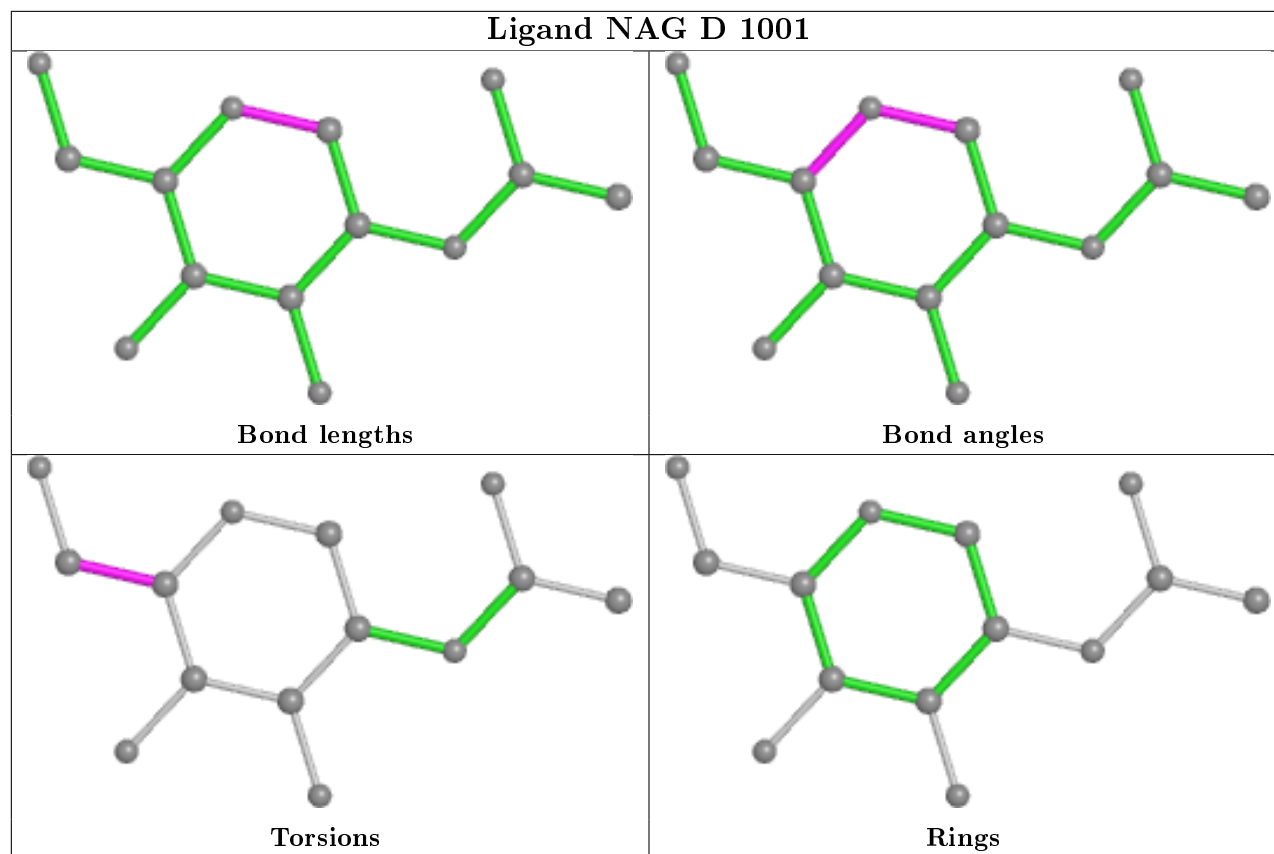
There are no ring outliers.

1 monomer is involved in 1 short contact:

Mol	Chain	Res	Type	Clashes	Symm-Clashes
5	A	1001	NAG	1	0

The following is a two-dimensional graphical depiction of Mogul quality analysis of bond lengths, bond angles, torsion angles, and ring geometry for all instances of the Ligand of Interest. In addition, ligands with molecular weight > 250 and outliers as shown on the validation Tables will also be included. For torsion angles, if less than 5% of the Mogul distribution of torsion angles is within 10 degrees of the torsion angle in question, then that torsion angle is considered an outlier. Any bond that is central to one or more torsion angles identified as an outlier by Mogul will be highlighted in the graph. For rings, the root-mean-square deviation (RMSD) between the ring in question and similar rings identified by Mogul is calculated over all ring torsion angles. If the average RMSD is greater than 60 degrees and the minimal RMSD between the ring in question and any Mogul-identified rings is also greater than 60 degrees, then that ring is considered an outlier. The outliers are highlighted in purple. The color gray indicates Mogul did not find sufficient equivalents in the CSD to analyse the geometry.





## 5.7 Other polymers [i](#)

There are no such residues in this entry.

## 5.8 Polymer linkage issues [i](#)

There are no chain breaks in this entry.



## 6 Fit of model and data ⓘ

### 6.1 Protein, DNA and RNA chains ⓘ

In the following table, the column labelled ‘#RSRZ> 2’ contains the number (and percentage) of RSRZ outliers, followed by percent RSRZ outliers for the chain as percentile scores relative to all X-ray entries and entries of similar resolution. The OWAB column contains the minimum, median, 95<sup>th</sup> percentile and maximum values of the occupancy-weighted average B-factor per residue. The column labelled ‘Q< 0.9’ lists the number of (and percentage) of residues with an average occupancy less than 0.9.

Mol	Chain	Analysed	<RSRZ>	#RSRZ>2			OWAB(Å <sup>2</sup> )	Q<0.9
1	A	133/136 (97%)	-0.13	4 (3%)	50	48	29, 43, 81, 108	0
1	D	133/136 (97%)	-0.24	5 (3%)	40	38	28, 38, 71, 120	0
2	B	133/141 (94%)	-0.27	3 (2%)	60	58	27, 40, 77, 115	0
2	E	133/141 (94%)	-0.34	3 (2%)	60	58	30, 41, 69, 101	0
3	C	128/139 (92%)	-0.36	1 (0%)	86	85	26, 35, 58, 79	0
3	F	131/139 (94%)	-0.30	3 (2%)	60	58	27, 39, 69, 107	0
4	G	122/131 (93%)	-0.22	1 (0%)	86	85	32, 50, 87, 107	0
4	H	123/131 (93%)	0.22	10 (8%)	12	10	32, 54, 88, 108	0
All	All	1036/1094 (94%)	-0.21	30 (2%)	51	49	26, 42, 79, 120	0

The worst 5 of 30 RSRZ outliers are listed below:

Mol	Chain	Res	Type	RSRZ
4	H	43	GLY	7.2
1	A	223	ALA	6.1
4	H	42	PRO	5.3
2	B	175	TYR	5.0
2	E	224	MET	5.0

### 6.2 Non-standard residues in protein, DNA, RNA chains ⓘ

There are no non-standard protein/DNA/RNA residues in this entry.

### 6.3 Carbohydrates ⓘ

There are no monosaccharides in this entry.

## 6.4 Ligands [i](#)

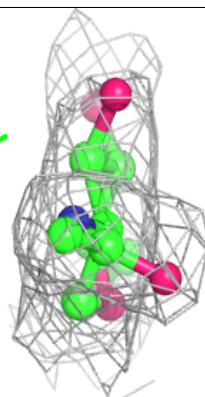
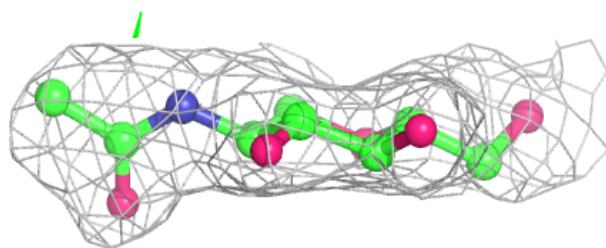
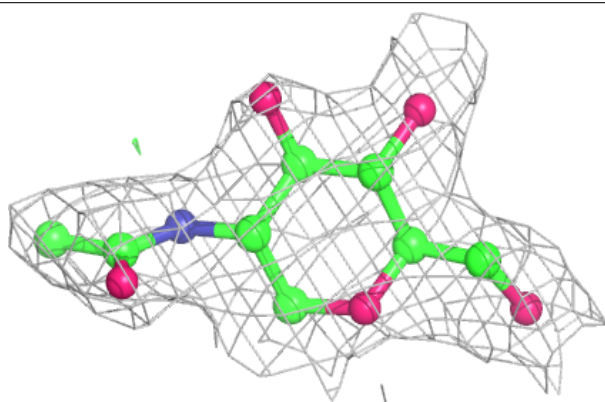
In the following table, the Atoms column lists the number of modelled atoms in the group and the number defined in the chemical component dictionary. The B-factors column lists the minimum, median, 95<sup>th</sup> percentile and maximum values of B factors of atoms in the group. The column labelled 'Q<0.9' lists the number of atoms with occupancy less than 0.9.

Mol	Type	Chain	Res	Atoms	RSCC	RSR	B-factors( $\text{\AA}^2$ )	Q<0.9
5	NAG	D	1001	14/15	0.81	0.16	53,62,69,71	0
5	NAG	A	1001	14/15	0.90	0.12	61,73,85,91	0

The following is a graphical depiction of the model fit to experimental electron density of all instances of the Ligand of Interest. In addition, ligands with molecular weight > 250 and outliers as shown on the geometry validation Tables will also be included. Each fit is shown from different orientation to approximate a three-dimensional view.

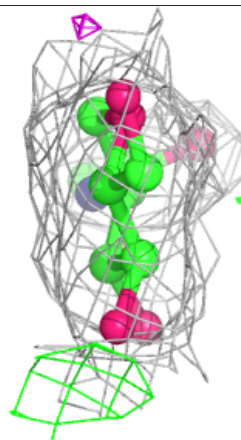
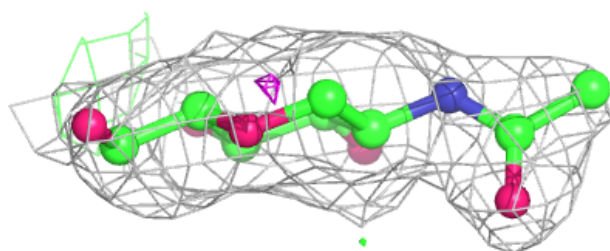
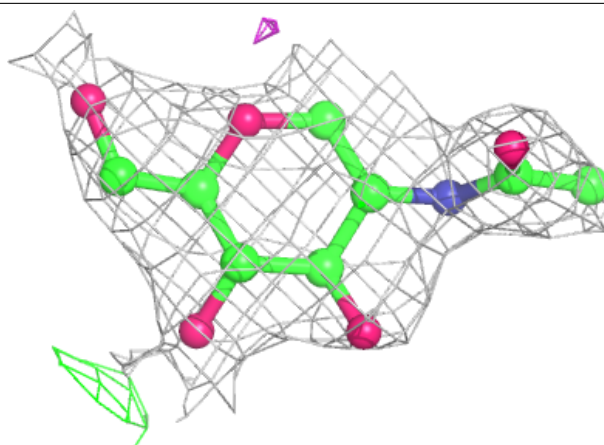
### Electron density around NAG D 1001:

2mF<sub>o</sub>-DF<sub>c</sub> (at 0.7 rmsd) in gray  
mF<sub>o</sub>-DF<sub>c</sub> (at 3 rmsd) in purple (negative)  
and green (positive)



**Electron density around NAG A 1001:**

$2mF_o-DF_c$  (at 0.7 rmsd) in gray  
 $mF_o-DF_c$  (at 3 rmsd) in purple (negative)  
and green (positive)



## 6.5 Other polymers ⓘ

There are no such residues in this entry.